

Kirton First!

Kirton In Lindsey Community Newsletter

Volume 24 Issue 2 March 2025





EDUCATIONAL EXCELLENCE

KIRTON ACADEMY

A NEW SCHOOL FOR OUR COMMUNITY



As we begin our second academic term as a new academy we would like to invite you to come and see the significant changes we have made.

School tours are the best way to get a feel for a school, you can visit lessons and meet our wonderful community.

If you would like to have a look around please email: enquiries@kirtonacademy.co.uk

www.kirtonacademy.co.uk



The George

Market Place
Kirton-in-Lindsey
DN21 4LX

Tel: 01652 240270

Opening Hours

Monday - Thursday
4.30pm – (Food 8.30) 10.00pm
Friday 4.00pm- (Food 8.30)
11.00pm
Saturday 12.00 pm (Food 8.30)
11.00pm
Sunday
10.30am – Last food orders
4.30pm

**Saturday now open all day from
12.00 pm**

Early Dinner Offer
20% OFF Total Bill
(Includes alcohol)

**Bar Classics, Specials,
Children's & Free From Menus**

Offer available
Monday – Thursday 4.30pm – 5.30pm
Friday 4pm – 5pm
Saturday 3pm - 5pm

Any offers not to run in conjunction with any other offers

Thoughts from the editor

See the good news. People have responded to our appeal for financial help. Thank you to those who have donated. Lots more needed so please give if you can. Bequests included!

Kirton Academy has sent lots of information about developments. We wish them good luck with their continued improvements.

See the KLAGS daffodil show information. Hope lots of you enter and there is a good display.

See notification of open clubs in May. Busy weekend in May with plant stalls as well.

Lots happening!

CONTACT

Email - Aidan Morton kirtonfirst@gmail.com 078564 49268

Adverts - Sue Smith suetsmith12@yahoo.co.uk 0748540 1433

EDITORIAL TEAM

Maggie Davies 078337 76253 Aidan Morton 078564 49268

Sue Smith 0748540 1433 Pat Frankish 649365

DELIVERY TEAM - Please contact Jenny if you are likely to be away.

DATES FOR COPY AND MAGAZINE DISTRIBUTION

JAN COPY 22nd DEC	DISTRUBUTION 2nd week January
MAR COPY 21st FEB	DISTRUBUTION 2nd week March
MAY COPY 18th APR	DISTRUBUTION 1st week May
JULY COPY 13th JUN	DISTRUBUTION 4th week July
SEPT COPY 15th AUG	DISTRUBUTION 4th week September
NOV COPY 17th OCT	DISTRUBUTION 5th week November

Together we have voice - singly we have none.

Important Contacts

Doctors

Monday to Friday - Excluding public holidays 8:30am to 6:00pm
Emergency calls only 8:00am to 8:30am
6:00pm to 6:30pm

01652 648214 - Appointments and General Enquiries
01652 648529 - Repeat Prescriptions Ordering (48 hours Notice)
111 - Out of Hours Service

Chemist

G Payne - Chemist Opening Hours
Monday, Tuesday, Thursday, Friday 9:00am - 1:00pm & 2:00pm - 6:30pm
Wednesday 9:00am - 1:00pm & 4:30pm - 6:30pm
Saturday 9:00am - 1:00pm
01652 648244

Library

Monday - Closed Tuesday - 1:30pm to 6:00pm
Wednesday - 11:00am to 5:00pm Thursday - Closed
Friday - 9:30am to 3:30pm Saturday - 10:00am to 1:00pm

01652 648406

Council

Town Council (Clerk) 01652 648978
Public drop in sessions at the Town Council office Tuesdays and Thursdays between 12-4pm. The Clerk is available to meet at other times by appointment.

North Lincolnshire Council 01724 297000
Refuse collections
Friday Week 1 Brown and Burgundy Bins
Friday Week 2 Grey/Green Bin and Boxes
Waste Disposal Site
Redbourne Mere (NB you may be asked for identification)
Open Friday, Saturday, Sunday, Monday, and Tuesday
Summer (1st March to 31 October) 10:00am to 6:00pm
Winter (1st November to 28th February) 10:00am to 4:00pm

Travel

Bus services from Kirton to Lincoln & Scunthorpe - Details are available at stops or by phoning "Traveline" on 08706 082608

Church

ST ANDREW'S UNITED CHURCH

Rev Dr Michael Sheard 01652 648846
Church Halls -enquiries- Heather Bunker 01652 648573
General Enquiries Jane Sheard 01652 648846
Website: www.standrewsunitedchurch.org.uk

ST RADEGUNDS CHURCH, GRAYINGHAM

Services: 9am every Sunday
Website: www.achurchnearyou.com/grayingham-st-radegund
Facebook: www.facebook.com/radegundgrayingham

ROMAN CATHOLIC WORSHIP ST MARY'S BRIGG

Parish Priest: Father Limnyuy Gamsi 01652 652221
Kirton contact: Jean McFarlane 01652 648114
Website: www.bartonandbriggcatholicchurches.org

Miscellaneous

Appletree Day Nursery	01652 649185
Archery Club	secretary.klac@gmail.com
Art Club	01652 648069
Brownies & Guides	01652 648800
DENTIST (Dr Bagga)	01652 640291
Happy Days Nursery	01652 648228
Kirton Academy	01652 648276
Jellitots Rachel	Rachel.colin@hotmail.co.uk
Kirton In Lindsey In Bloom	tanya.KLIB@outlook.com
Kirton Lindsey JFC	info@kljfc.com
Kirton Primary School	01652 648792
KLASSIC Venue Manager	07936 936961
Mini Bloomers	mini_bloomers@outlook.com
POLICE (Non emergency)	101
POST OFFICE	01652 648234
Scouts Group	daniel.crawshaw@northlincsscouts.org.uk
Scunthorpe Hospital	01724 282282
Table Tennis	07803 459464
Town Hall	07752 246255
Traveline (Buses)	0870 6082608
Vetinary Surgeon	01427 612662

Don't forget the website for Kirton in Lindsey

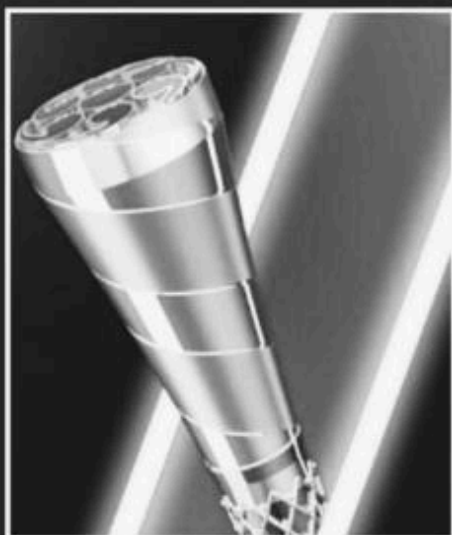
The first point of contact for anyone wanting to know what goes on in the town.

We hope that you will discover new activities and groups that you would like to be a part of.

There is also information about community events, transport and local policing.

Go to www.kirtoninlindsey.com for all the info!

 **Calling for Baton-Bearers in North Lincolnshire**
Applications are now opened



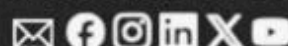
North Lincolnshire Tour Date
15.09.2025

<https://batonofhopeuk.org/become-a-baton-bearer/>

Closing date: Monday 31st March 2025

**BATON
OF
HOPE**
#PASSITON

BATONOFHOPEUK.ORG



When fishes flew and forests walked
And figs grew upon thorn,
Some moment when the moon was
blood
Then surely I was born.

With monstrous head and sickening cry
And ears like errant wings,
The devil's walking parody
On all four-footed things.

The tattered outlaw of the earth,
Of ancient crooked will;
Starve, scourge, deride me: I am dumb,
I keep my secret still.

Fools! For I also had my hour;
One far fierce hour and sweet:
There was a shout about my ears,
And palms before my feet.
G K Chesterton

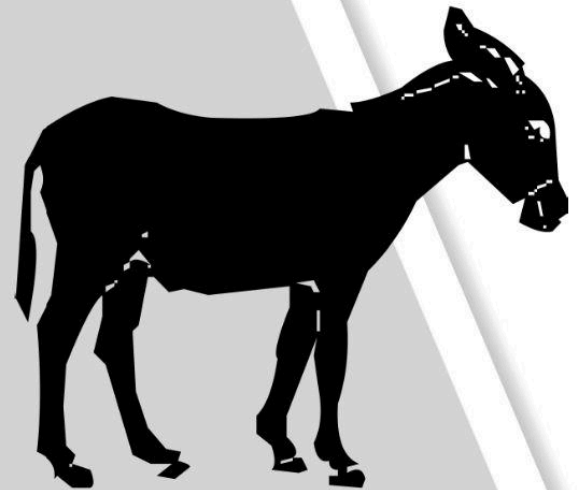
His face is what I like.
And his head, much too big for his body- a
toy head,
A great, rabbit- eared, pantomime head,
And his friendly rabbit face,
His big, friendly, humorous eyes- which
can turn wicked,
Long and devilish when he lays his
ears back.

But mostly he's comical- and that's
what I like.
I like the joke he seems
Always about to tell me. And the laugh,
The rusty, pump-house engine that cranks up laughter
From some long-ago, far off, laughter-less desert-

The dry, hideous guffaw
That makes his great teeth nearly fall out.
Ted Hughes

"A Donkey" was written by
Ted Hughes, who grew up in
West Yorkshire, and was
famous for his many
descriptive poems of animals
and birds. He obviously feels
great affection for donkeys!

"The Donkey" written by G K
Chesterton is written from the
donkey's perspective.
Bemoaning how he is
regarded by many as a bit of
a joke, he consoles himself
by remembering with pride
his role on Palm Sunday.
Maggie Davies



Donkeys

Regular activities at the Town Hall



Weekly:

Town Hall Office Open - Mondays & Tuesdays 9am - 12pm

Fitness 4 Fun Circuits - Mondays at 6.30 to 7.30pm

Town Council Office Open - Tuesdays 12 - 4pm
(Clerk 01652 648978)

Evergreens - Tuesdays 2-4pm (Barry 07876 332188)

Seated Exercise - Wednesdays at 10-11am (NLC Active Communities Team: 01724 297270)

Tai Chi - Wednesdays 11.15-12.45 (George -01427 617171)

Rock Choir - Wednesdays 7-8.30pm
(Register at: <https://rockchoir.com/>)

Pilates with Louise - Thursdays 10 -11am
(Louise 07790 759003)

Town Council Office Open - Thursdays 12 - 4pm
(Clerk 01652 648978)

Box-it! - Thursdays 5.30-6.30pm
(<https://www.kirtoninlindsey.com/boxit>)

Slimming World - Fridays 9.30- 11.30am

Community Shop - Fridays 1-2pm.

Monthly:

Tea Dance 2nd Monday 2-4pm
(Jenny 01652 640281)

WI - 2nd Tuesday 7.30-10pm (Gill 07714 240053)

Kirton in Lindsey Society - 4th Tuesday 7.30-9.30pm
(Martin 01652 648435)

KLAYS (amateur gardeners) - 3rd Wednesday
(Sarah 01652 409717)

Cupcakes, Coffee and Chat - 1st Saturday 9.30 - 12 noon

Town Hall Craft Club - 4th Saturday 1-4pm

Pop-up Market - 1st Sunday 10am to 2pm

Town Hall Live - (Brian - 01652 649230)

Information correct at the time of going to press but situations can change. Any later developments will be on our website and short-notice changes will be posted on our Facebook page so do keep checking. If in doubt, contact Jo on

info@kirtoninlindseytownhall.co.uk or ring **07752 246255** or the event organiser.

Charity Number 1160832

www.kirtoninlindseytownhall.co.uk

Follow us on
Facebook



burton & dyson
SOLICITORS

Your local legal specialists

Burton & Dyson have been providing legal advice to individuals and businesses in Lincolnshire for more than 150 years.

No two clients are the same, which is why our services are individually tailored to meet your exact needs.

We pride ourselves on building strong and enduring relationships with our clients and look forward to being able to assist you, whatever your requirements.

Our specialist services include:

- Business & Employment
- Commercial property
- Moving home
- Estates & Probate
- Wills & Trusts
- Powers of Attorney
- Family & Child Care
- Fixed Fee Divorces
- Notary Public

You can get in touch with us in any of the following ways;

Call 01427 610761 | Email info@burtondyson.com | Visit 22 Market Place, Gainsborough

www.burtondyson.com

22 Market Place • Gainsborough • Lincolnshire • DN21 2BZ
01427 610761 • info@burtondyson.com

R & A Accountancy Services (Lincs) Ltd

Small & Friendly with 30 years + experience

We specialise in providing a personalised accounting and taxation service for sole traders, partnerships, sub-contractors, CIS tax refunds and individuals.

We can tailor our service to offer:-

- ☆ Year End Accounts
- ☆ Self Assessment Tax Returns
- ☆ VAT Returns
- ☆ And much more...

Call us today - Your initial consultation is free!!

Telephone: 07932 089256

Email: richard@ra-lincs.co.uk



TIGHE GROUP OF COMPANIES

**SHOT BLASTING & SPECIALISED
COATINGS, DOMESTIC, MARINE &
INDUSTRIAL PAINTING CONTRACTORS**

**Jack Tighe Ltd & Jack Tighe Decorating Ltd
Redbourne Mere, Kirton Lindsey
Tel: 01652 640003 Fax: 01652 648159**

Shop Applied Specialised Coatings:

**Scunthorpe Works
Tel: 01724 861879 Fax: 01724 280005**

**Doncaster Works
Tel: 01302 880360 Fax: 01302 880370**

**www.jacktighe.com
sales@jacktighe.com**



**Soft Tissue Therapist (qualified to Level 5)
incorporating Sports and Remedial
Massage, Sports Injury Assessment &
advanced treatment techniques.
Clinical & Maternity Reflexologist
Complementary Therapist**

**KATHRYN DEAN
SPORTS & REMEDIAL
THERAPIES**

North Cliff Farm
North Cliff Road
Kirton Lindsey
Lincolnshire

Tel: 07747 471752
Email:

kathryndean18@gmail.com
New website coming soon!



Soft Tissue Therapists work successfully alongside physiotherapists, chiropractors and osteopaths. A clinical therapy that uses massage techniques to manipulate the body's soft tissue. Used to assess and prevent injury, treat sports and non sport related injury, relieve muscle tension, swelling and pain. Using a variety of neuro-muscular techniques to provide an accurate, effective treatment.

Reflexology is very popular in the treatment of many conditions such as digestive disorders, arthritis, stress related illnesses and allergies to name but a few.

Maternity reflexology is a wonderful way of helping ladies cope with the aches and pains during pregnancy, after birth and during menopause. I also help couples with fertility issues.

**Thermo Auricular Therapy (ear candling)
& Indian Head Massage** also available.

GIFT VOUCHERS AVAILABLE

Please contact Kathryn Dean ISRM, AOR for more details or to make an appointment.

Kirton in Lindsey Town Council by-election – 27th March 2025

**An election has been called to fill a vacancy on Kirton in Lindsey Town Council
The election will take place on 27th March 2025 – look out for more details soon.**

To stand as a candidate at this Town Council election:

Anyone aged 18 or over can stand for election if they meet certain qualification criteria. The first is that you are a British citizen or a citizen of either an eligible commonwealth nation or the European Union.

The second qualification criteria is your connection to Kirton in Lindsey; there are four different criteria you could meet and **you only need to meet one of them** to be able to stand:

- i) be registered as a local government elector within the Parish of Kirton in Lindsey; **or**
- ii) have occupied as owner or tenant any land or other premises during the whole of the previous 12 months within the Parish of Kirton in Lindsey; **or**
- iii) their principal or only place of work during the whole of the previous 12 months has been within the Parish of Kirton in Lindsey; **or**
- iv) have resided in the Parish of Kirton in Lindsey for the whole of the previous 12 months or within 3 miles of it.

You are disqualified from being a Town Councillor if any of the following apply: you are an employee/paid officer of Kirton in Lindsey Town Council, you are subject a bankruptcy restrictions order/interim order, you have been sentenced (inc. suspended sentences) to a term of imprisonment of three months or more within the five years prior to polling day or you have been disqualified under the Representation of the People Act 1983 e.g. for corrupt or illegal electoral practices.

Detailed guidance on qualification and disqualification can be found on the Electoral Commission website.

Information for Voters

Voters do not require a polling card to vote and can vote at their usual polling station by attending and giving their name and address to the staff at the polling station.

Remember the new rules about identification when voting at the polling station.

If you live in Kirton in Lindsey, go to your usual polling station at either:

the Church Halls on St Andrew's Street

or the Library / Youth Centre on King Edward Street to vote.

The By-Election to elect a Town Councillor to Kirton in Lindsey Town Council will take place only if more than one valid nomination is received before the deadline.

No Poll will take place if only one valid nomination is received,
as that candidate will be automatically elected.

Further information about the election can be found on the Kirton in Lindsey Town Council and North Lincolnshire Council websites as well as by contacting the Town Council Office at the Town Hall.



Kirton Academy: Building a Future as a Community School

Kirton Academy continues to make strides as a beacon of community engagement and educational excellence. With an array of exciting initiatives and developments on the horizon, the academy is cementing its role as a forward-thinking institution dedicated to supporting both its students and the wider community.

Empowering Families Through the Air Fryer Project

We are thrilled to announce that Kirton Academy has been approved as a provider for the **Air Fryer Project**. This innovative initiative is aimed at helping families embrace healthier cooking practices by teaching them how to effectively use air fryers. Our workshops will focus on equipping families with the skills and knowledge to prepare nutritious meals, making healthy eating accessible and affordable.

Details on how to apply to attend these workshops will be shared soon via our website, www.kirtonacademy.co.uk and our social media platforms. This project is a testament to our commitment to fostering healthier lifestyles within our community.

Celebrating Student Achievements

Our Year 7 students will be participating in the **North Lincolnshire Big Sing** at Baths Hall, an event that promises to be a memorable experience. This collaborative musical celebration showcases the talents of young voices, and we are incredibly proud of our students for taking part in such an exciting opportunity.

In sports, our Year 10 team has reached a historic milestone, advancing further in the **English Schools Club** than any team from Kirton Academy ever has. Their dedication and teamwork have inspired the entire school and the Kirton-in-Lindsey community, who are undoubtedly cheering them on as they strive for victory.

New Facilities to Enhance Learning

Kirton Academy is embarking on a transformative phase of development with major building projects starting after February half-term. The construction of a **new cooking room** and a **state-of-the-art science lab** marks a significant step forward in providing our students with modern, high-quality facilities. This work has only been possible through the support of Lincolnshire Gateway Academies Trust.

These new spaces will not only benefit our students but also enable us to extend our resources to local primary schools, fostering collaboration and enhancing education across the community.

Supporting Academic Success

As our Year 11 students prepare for their final mock exams ahead of the GCSE period starting on May 1, 2025, we are committed to supporting them every step of the way. Initiatives like the **Magic Breakfast Program**—offering free breakfast to every student daily—ensure that every child starts their day fueled and ready to learn. This program underscores our belief in the importance of proper nutrition in achieving academic success.

A Bright Future for Kirton Academy

We extend our heartfelt thanks to the community for their ongoing support as Kirton Academy continues its journey of growth and excellence. These exciting projects and achievements reflect our mission to provide exceptional opportunities for our students and to be a vital resource for our community.

Stay tuned for updates on our initiatives and accomplishments by visiting www.kirtonacademy.co.uk and our social media platforms. Together, we are building a brighter future for Kirton Academy and the community it serves.

25th February 2025

Academy's transformation continues

Major refurbishment works to provide vastly improved facilities and state-of-the-art classrooms at Kirton Academy have begun.

The significant investment comes as part of the agreement which saw the school join Lincolnshire Gateway Academies Trust last year.

The improvements include:

- Four science classrooms and prep rooms transformed
- Updated food technology classroom
- Refurbishment of the PE changing rooms
- Refit of kitchen and servery
- Big electrical upgrade including a new fire alarm system

The works follow the refurbishment of the reception, music room, library and other areas last year.

Principal Emma Ricketts was pleased to see the works starting.

"Students and staff have already seen major improvements since the academy joined the trust last year but the latest works will transform other areas," Mrs Ricketts said.

"We have been planning the works for some time and disruption will be kept to a minimum.

"The aim is to have everything completed in time for the start of the new academic year in September."

Chief Executive Officer at Lincolnshire Gateway Academies Trust Martin Brown joined Mrs Ricketts at the start of the works.

He said: "I'm delighted to see this investment as we continue to transform the teaching and learning environment.

"When we first visited, it was clear the academy was in desperate need of significant capital expenditure.

"This latest programme of works will ensure we have a school and facilities of which staff and students can be proud.

"It is part of our overall transformation of the school under Mrs Ricketts. We are determined to continue to drive standards upwards."

The works are being undertaken by Cube3.





McLoughlin Piano Tuning

CGLI FSB MPTA

07876 661475

07964 368186

01724 336179

www.mcloughlinpianotuning.co.uk



**Independent suppliers of
LPG cylinders and
accessories for home, farm,
business and industry.**

**Competitive prices, no
bottle deposit, excellent
service.**

Call Jason on 07747 471750
or email: midlincsfuels@gmail.com

North Cliff Farm, North Cliff Road,
Kirton Lindsey



**FREE and
prompt
local
delivery of
LPG**

Do You Need a Builder?

Any Job – Large or Small

All work guaranteed

Driveways, Garages, Alterations.

Extensions, New Builds, Joinery,

Renovations, Stonework



For a Friendly Service Est. 1990

Call **DEAN** on **07885782507** or

Email: **fieldingdean9@gmail.com**



Funeral Director N.A.F.D

F. S. Machin

24 HOUR PERSONAL SERVICE

PRIVATE CHAPEL OF REST

*A Family Business Serving Kirton in
Lindsey and the
Surrounding Area for over 60 years*

GOLDEN CHARTER PRE-PAID

FUNERAL PLANS AVAILABLE

5 March Street, Kirton in Lindsey

01652 632205

NIGEL ALLEN PLUMBERS LTD

**SERVICE, REPAIR AND
INSTALLATION OF GAS
APPLIANCES**

POWER FLUSHING

HEATING INSTALLATIONS AND UPGRADES

LANDLORD GAS SAFETY CHECKS

TEL: 07850 559801

EMAIL: nigel_allen123@hotmail.co.uk

Gas safe no is 301921



Castle

**Building & Garden
Maintenance**

All Types of Work Undertaken

**Brickwork, Roofing, Joinery
Decorating, Plastering
and
Garden Work**

All Jobs Considered

Call Andy on

07852 190091 or

01673 818543





Kirton in Lindsey Town Council

Budget 2025 - 2026

At the Full Town Council Meeting on 18th December 2024, Councillors approved the budget for 2025-2026:

£117,225

The average household (Band D property) in Kirton in Lindsey will contribute £100.52 annually, which works out at just £1.93 per week.

Due to increased costs of providing services to the town,

this is a 7.3% increase on last year.

The Town Council budget covers the following:

Open Spaces:

£23,435 (19.99%)

The Town Council's maintenance contracts look after The Green (including the War Memorial), the Cemetery, flower beds and areas around the boundary signs across the town.

The Town Council receives funding from North Lincolnshire Council for works to the highway verges and the Public Rights of Way network.

This area also covers the upkeep and provision of the play area at The Green, and maintenance of some heritage areas of the town.

Administration:

£59,547 (50.8%)

Budgeting for two part time members of staff (36.5 hours per week & 17 hours per week), office rental, office services, office equipment and meeting room hire costs.

The statutory requirement for an annual audit, memberships and subscriptions to professional bodies. The administration budget also includes training for staff, insurance, legal licences and permissions. Additionally, technology and communications, including the Kirton in Lindsey Town Council website are covered in this section.

Let us know your priorities

Your Town Council can only act on issues that we know about, so please get in touch to let us know what matters to you:

Kirton in Lindsey Town Council
Town Council Office
Diamond Jubilee Town Hall
High Street
Kirton in Lindsey
DN21 4LZ

01652 648 978

07518 284 173

Civic Duties:

£2,290 (1.95%)

Civic commitments including an annual Service and Dinner to build countywide relationships. This also covers the annual Civic Award and Mayoral Allowance.

Grants & Donations:

£15,380 (13.12%)

Every year, Kirton in Lindsey Town Council provides Grants and Donations to organisations based in Kirton in Lindsey, see www.kirtoninlindseytowncouncil.gov.uk for more details and how to apply for these.

For further information email:
enquiries@kirtoninlindseytowncouncil.gov.uk

more



Kirton in Lindsey Town Council

Budget 2025 - 2026

Burial Ground:

£717 (0.61%)

The Town Council has burial authority responsibilities, this covers the maintenance and running of the town Cemetery at Grove Street.

Kirton in Lindsey Cemetery opened in 1940 and the Town Council now holds over 1,319 records.

Public Services:

£250 (0.21%)

To fund the SportsZone community sports for young people of the town and the upkeep of the Town Clock.

Charities:

£1,400 (1.19%)

The Town Council look after 3 of the town's charities; 'KLASSIC' generates its own income. As 'The Green & The Market Place' and the 'War Memorial & Garden of Edward Elmhurst Duckering' have no income, the Town Council budget for upkeep and maintenance of these areas.

Democratic:

£400 (0.34%)

Expenses set aside for Councillor training, and for Local Election costs, held every 4 years.

Promoting Kirton in Lindsey:

£12,756 (10.88%)

Bringing events to our town. The Town Council organises the Summer Gala, including the Scarecrow Trail, Best Kept Town Centre Frontage competition and the Christmas Festival, including the Christmas Lights in the central Market Place and floodlighting at the Church.

Allotments:

£1,050 (0.9%)

In 2022, the Town Council opened the new allotment site, which requires ongoing maintenance and utility supplies.

There is a waiting list for plots, you can use the contact details provided, to find out more, and to register your interest.

Get to know your Town Council

Kirton in Lindsey Town Council currently comprises 9 local Councillors, all dedicated to representing your needs. More information including contact details are available at www.kirtoninlindseytowncouncil.gov.uk

Your Town Council is also a statutory consultee on Planning Applications across Kirton in Lindsey, and these applications are discussed at Town Council meetings with reasoned comments and objections, based on residents views submitted.

Kirton in Lindsey Town Council works in conjunction with North Lincolnshire Council and other organisations and authorities, to raise concerns, priorities and improvements, trying to keep Kirton in Lindsey on their agendas.

more

For further information email:
enquiries@kirtoninlindseytowncouncil.gov.uk



Kirton in Lindsey Town Council - March 2025 update

Result of 13th February Election

The Town Council welcomes Tony Kitchen as Town Councillor for Kirton in Lindsey. The Town Council also thanks Mark Goring and David O'Brien for their interest in the role and those residents who engaged in the democratic process which is outside of the control of Kirton in Lindsey Town Council.

Dog Fouling problems

The Town Council is aware of increasing problems of dog fouling by a minority within the town and enforcement by dog wardens is possible, but only if people are reporting instances through to North Lincolnshire Council. Without reports directly to them, it is unlikely that they will have the evidence they need to assign a dog warden. So please always report it when you see it.

Website for Kirton in Lindsey - www.kirtoninlindsey.com

Don't forget the website for Kirton in Lindsey – see further details in this issue of Kirton First!

Local Councils Award for Kirton in Lindsey Town Council

Kirton in Lindsey Town Council is the first Council to attain the new Silver Award. The award is assurance that the Council operates at a national professional standard and is dedicated to delivering quality services - showing that the Town Council achieves good practices in governance, community engagement and Council improvement.

Town Council Budget - Precept information for 2025-2026

In December 2024 Kirton in Lindsey Town Council agreed its budget for 2025-2026. North Lincolnshire Council has imposed a 2.7% increase at Band D, which meant that if the Town Council budget remained the same as last year, Band D Council tax payers would still have seen a 2.7% increase. Your Town Councillors considered the budget very carefully and it was clear that with costs rising in every area it was not possible to keep the budget at the same level as 2024-2025. A 4.5% increase was agreed, and coupled with the 2.7% increase imposed by North Lincolnshire Council this is a total increase of 7.3% at Band D. Council tax is worked out at Band D as it is considered the average housing band. Areas of the budget which have had to increase are Administration, Grants and Donations, Open Spaces, Burial Ground, Promoting Kirton, Civic and Charities. Further information and a full breakdown are included in this issue of Kirton First.

Baton of Hope – Monday 15th September

The Baton of Hope is the UK's largest suicide prevention initiative and will this year travel through our region. North Lincolnshire Council are looking for individuals and organisations to play a vital role in helping the Baton make its journey across the county. More information in this issue!

Councillor Vacancy – Election to be held Thursday 27th March

Following the resignation of Cllr Delsignore in January, there is currently a vacancy for a Town Councillor, please get in touch for more information about the role and how to get involved. The vacancy will be filled by an election, as requested by at least ten residents, and this will be held on Thursday 27th March so look out for details online and in noticeboards for more information.

Stay informed!

Keep in touch about the work of the Town Council on our website and Facebook page – just search for 'Kirton in Lindsey Town Council'. Information about meetings, decisions and our activities is always available to you.

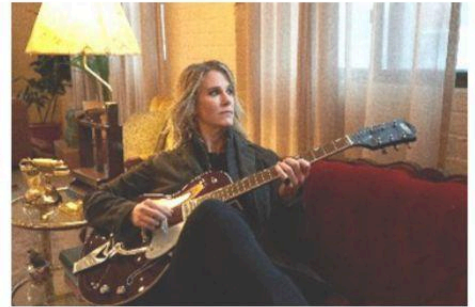


**TOWN
HALL
LIVE**

Bringing the best in Folk, Roots & Americana music from America, Canada, Europe and the UK to Kirton

FRIDAY 28TH MARCH – LYNNE HANSON with BLAIR MICHAEL HOGAN

A welcome return for Lynne and Blair. A two-time Canadian Folk Music Award winner, Lynne Hanson is known for her high energy roots guitar driven live performances. She has an uncanny way of connecting with her audience with an authenticity, that is entertaining and disarming. Last summer Lynne released her 10th album 'Just a Poet'. (£16)



FRIDAY 11TH APRIL – GARY STEWART'S GRACELAND

This spectacular seven-piece band led by the legendary Leeds based troubadour Gary Stewart come together to re-create Paul Simon's landmark album 'Graceland'. Expect to hear those magical songs with their captivating stories, distinctive vocals and harmonies and South African rhythms brought to life in front of you. (£18)

FRIDAY 25TH APRIL – TARA MACLEAN

Tara, from Prince Edward Island, Canada has been captivating audiences around the world for 25 years with her soulful voice and poignant songwriting. In August 2024 she released a five track EP 'Live in my Hometown'. With its evocative delivery and relatable themes, it showcases Tara's award-winning songwriting and vocals. (£16)



FRIDAY 16TH MAY – THE HUNCH

The Hunch from Wakefield perform expertly crafted classic folk, blues, soul and popular songs with five-part harmonies, instrumental virtuosity and a generous dash of humour between songs. Their sets include songs by artists as diverse as Bob Dylan, Vin Garbutt, Coldplay and Joan Osborne. They are a unique must-see band. (£16)



SUNDAY 27TH JULY THE THL GARDEN FESTIVAL

TICKETS FOR ALL CONCERTS CAN BE PURCHASED FROM:

Brian on 01652 649230 or brianchudley@btinternet.com, Morrison's Daily in Kirton in Lindsey Market Place or www.wegotickets.com

For information on the full programme visit our website at

www.townhalllive.co.uk

Subscribe to our mailing list with regular updates on upcoming concerts

Follow us on Facebook



AMARA CARE

Supporting Meaningful Lives...

Amara Care is a Domiciliary Care Agency located in North Lincolnshire and Lincolnshire registered with the Care Quality Commission.

We provide services for:

- Adults with physical disabilities
- Adults with sensory loss including dual sensory impairment
- Adults with mental health issues
- Adults with learning disabilities
- Children and their families
- Dementia
- Older adults

We take referrals from:

- Individuals
- Social Services
- Health Services
- Direct Payments
- Individual Budgets
- Independent Living Fund
- Private arrangements

Support Services Available:

- Up to 24 hour support packages
- Personal care
- Medication care / support to attend medical / GP appointments
- Help with household tasks
- Support getting in and out of bed
- Shopping
- Preparing meals
- Trips out and keeping active
- Tenancy support

**Looking for a Career
in Support Work?**

Please contact us for
our current vacancies!

If you are looking to arrange support for yourself or someone you know, or if you would like further information on any of the services we have to offer, please contact us on:

Tel: 01652 648335

Email: admin@amaracare.co.uk

Artemis House, 25 High Street, Kirton in Lindsey, DN21 4LX



Frankish Psychological Services

Promoting Independent Living



Peggy's

Counselling

Psychology & Assessments

All Referrals welcome
including self referrals

NO LONG WAITING LIST

**Official Diagnosis using the
NICE guidelines & DSM5
criteria.**


- *Autism Assessments*
- *ADHD Assessments*
- *WISC assessments*
- *Therapy*
- *and more*

Counselling and Psychology available:

***Face to Face and Online
therapy appointments
available!!***

- *Person centered approaches*
- *A safe space to talk*
- *Supporting adults ,children and families*
- *Mental Health Support*
- *Supervisions*
- *lots more to offer*



 **01652 648335**

 **admin@patfrankish.co.uk**

 **Frankish Psychological & Counselling services**



Artemis House, 25 High Street, Kirton in Lindsey, DN21 4LX



Bring this Voucher with you to your first appointment to receive **20% off** your first therapy appointment.

Please note this offer is only available for therapy only, assessment fees apply.



The British
Psychological Society



DRY AMD?

(AGE-RELATED MACULAR DEGENERATION)

TREATMENT AVAILABLE NOW!

**Hospital Grade Advanced
OCT Eye Exams**

by Dr Janjua

**Specialist Lenses
For Various
Eye Conditions**

**Widest Variety
of Frames
in Brigg**

**O'BRIEN'S
OPTICIAN
ESTD.1979**

enquiries@obriensopticians.co.uk

www.obriensopticians.co.uk

43/44 Wrawby Street,

Brigg,

North Lincolnshire DN20 8BS

**01652 653 595
01652 649 024**



CLEATHAM HALL NEWS

Celebrate Mother's Day weekend

from Friday the 28th March to Sunday the 30th March 2025

All Mothers will receive a spring bouquet.

Lunch on Sunday 30th March -served from 12 noon for 12:30pm and 2pm for 2:30pm.

Afternoon tea is at 4:30pm for £30 pp, add a special cocktail £7.50 or mocktail for £5.50

The Restaurant open daily from Wednesday to Sunday to enjoy Lunch, Afternoon tea and Dinner

Drop in and try our NEW cream tea

from £7.50 per person.

Lunch served for 12 to 3pm

Afternoon Teas from 1 to 4pm

Dinners from 6 to 8.30 pm

Ask about our special offers

for Over 65's lunches on Wednesday to Friday

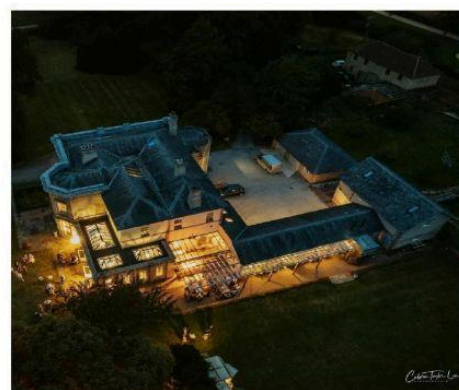
See our website at www.cleathamhall.com/events for our menus and pricing

To book call: 01652 649402 or email: enquiry@cleathamhall.com

Restaurant Opening Times:

Wed - Sat: 12pm - 8:30pm

Sunday Lunch
12pm - 4pm



Cleatham Hall, Cleatham, North Lincolnshire, DN21 4JS

www.cleathamhall.com

Tel: 01652 649402

Email: enquiry@cleathamhall.com

North Lincolnshire Libraries

Kirton in Lindsey Library

Our library is a safe and welcoming space for all and offers a range of services including:

- Access to computers
- Children's Library and crafting activities
- Adult fiction and non-fiction books for loan
 - WiFi
- Blue Badge applications, by appointment only
- Blue Badge evidence scanning and photographs
- Travel pass applications, by appointment only
 - Information, Advice and Guidance
 - Scanning, printing, and photocopying

* Weekend opening hours are for borrowing and returning books only.

Information, advice and access to computers and printers is available on weekdays *



Find opening times at <https://www.opac.northlincs.gov.uk/our-libraries> or download the North Lincolnshire Libraries app.

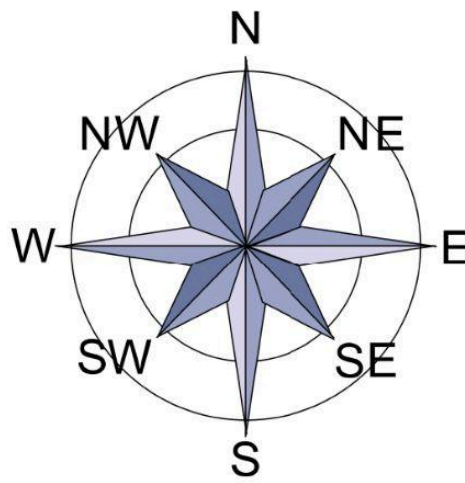
**20 King Edward Street
Kirton in Lindsey
Gainsborough
DN21 4NQ**

01652 648406
library.enquiries@northlincs.gov.uk

**North
Lincolnshire
Council**
www.northlincs.gov.uk

A Trip South

By Andy Palin



My name is Andy. I am married with a 15 year old son and for 30 years I have lived in Kirton Lindsey and worked at the Steel Works before moving to a pharmaceutical company on the Humber Bank.

In 2022, with redundancy looming, I saw a job advertised online with a difference; polar engineer for the British Antarctic Survey. I said to wife that I'd seen my dream job advertised and, to my surprise, she told me go for it. This is the short story of my trip to Antarctica working for the British Antarctic Survey.

Having read the stories of Amundsen, Scott and Shackleton, I'd always had an interest in the poles. For some reason sun and sandy beaches just don't do it for me, but snow capped mountains do.

Antarctica is a fascinating place; the highest (averaging 2500 m), driest (classed as a desert), coldest (minimum temperature -90 °C) and windiest of the continents. Whereas the North Pole is floating

sea ice, Antarctica has land twice the size of Australia. Surprisingly relatively little snow falls there, but what does fall builds up until, in places, it reaches nearly 5 km thick with the oldest ice dated over 4 million years.

Although very little lives on land, Antarctica's water are teeming with life and its influence on global weather is huge.

British Antarctic Surveys originated from a war time mission, Operation Tabarin, named after a Paris night club, originally providing a British presence in Antarctica but also collecting meteorological observations. Since then the science role has grown with BAS operating 5 research stations; Signy, Bird Island, King Edward Point, Rothera and Halley IV.

Every year teams of scientists from around the world conduct research in Antarctica, but to support the scientists, requires a back-room staff of chefs, doctors, mechanics, meteorologists, mountaineers, plumbers, pilots,

divers and electricians. This is where I came in.

In September 2023 I found myself in Cambridge at pre-deployment training in a room full of the most excited, diverse group of people I've ever met.

Someone who had been in Kazakhstan for 3 months, another who'd hiked in the Yukon a week earlier and a guy who'd driven a bus through Namibia, plus a lot of Scottish farmers.

My welcome pack informed me I was to leave late December, fly through South America, pick up the Sir David Attenborough in the Falklands to finally arrive at Rothera for a 10 week stay in Antarctica.

The route south was Heathrow, Sao Paulo (Brazil), Santiago (Chile) Punta Arenas (Chile), Falklands. The flight down itself was spectacular, arriving at Sao Paulo at dawn, flying over forests in Brazil leading to wide open plains moving into Paraguay and Argentina, eventually leading to

deserts with huge salt flats and finally crossing the Andes to reach Santiago (Chile). The next day we flew the spectacular route along the Andes, towering snow covered mountains and volcanoes, and too many glaciers to count. We arrived in Punta

Arenas in mid summer, but it felt cool and windswept. From there it was an 1½ hour flight to the Falklands and then a short drive by coach to

East Cove to pick up the RRS Sir David Attenborough.

I was excited and nervous about the next part of the journey. The Southern Ocean and particularly the Drake passage has a fearsome reputation. Partly to do with the earth rotation and with no land to stop it the winds just circle the globe creating mountainous seas. With names like the Roaring Forties and Furious Fifties (latitudes) it was never going to be a mill pond. I was informed that on a previous voyage the ship had rolled to 42°, the chef said he makes the soup very thick on days like that! Luckily the sea



wasn't too bad once we were on the leeward side of the peninsula.

I spent a lot of time on the observation deck, it was surprising how often we saw whales. We also often saw albatross soaring behind the ship, an incredible sight with their 3 metre wingspan. 4 days into the trip we

w e r e approaching the Antarctic peninsula. I got up at 3am as I didn't want to miss anything. I w a s disappointed to find thick fog and snow but, slowly through the fog, I could make out the m o s t spectacular landscape I'd ever seen. An Ice shelf as far as the eye could see,

with towering cliffs made of house-sized blocks of ice, towering peaks on either side closing in on us. We slowed as

we entered the Lemaire Channel, the ship gently nudging smaller bergs out of the way. It was early January and mid-summer but weeks earlier the channel would have been frozen solid. We continued through the Bellingshausen Sea until after a week of travel we finally arrived at Rothera Research Station;



Adelaide Island.

Andy Palin

(To be continued)



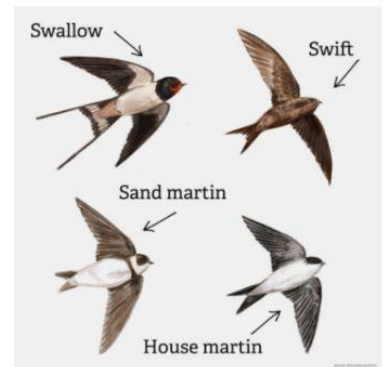
the kirkton in lindsay society

Time for 'bodds wi' two tayals' to appear and when 'England died on the 1st February 1927!'

If "*tha' wa' baarn i' Linkishir*" you may have heard you grandparents utter the above words at this time of year. It's a Lincolnshire saying meaning '*it is time for the birds with two tails to appear*'; which of course means swallows and swifts coming back in the springtime.



Is your house or garage protected by 'thunderwort? or have your eaten 'breyad 'n' cheeyas' in May. You might find out more about these Lincolnshire terms, folklore and sayings if you come along to the April meeting of the Society. Tim Davies will be giving a fascinating talk about Lincolnshire folklore and sayings collected by Ethel Rudkin. If you can't make it you'll find out in the next issue.



England died on the 1st February 1927!

That is to say the well-known and respected local solicitor

England Howlett died on this date aged 72. Here he is pictured with his

father Bartholomew and sister Annie, outside their home South View, on South Cliff Road. He and



Annie played a major part in church affairs, between them they served as organist for 33 years. Amongst various charitable donations in his will he also left £400 for a stained-glass window. He also set up the Howlett

Charity for providing gifts of money, coal or clothing for the aged and destitute poor of the parish at Christmas, irrespective of creed.

Forthcoming meetings of the Society:

TUESDAY 25 th MARCH	New Images of the Universe - astronomer and author Paul Money is back to share more fantastic celestial pictures and images of outer space.
TUESDAY 22 nd APRIL	"Otchkins, Boggarts and a Tater for Rheumatism" - Making his first visit Tim Davies explores the local folklore stories collected by, amongst others, Ethel Rudkin.
TUESDAY 27 th MAY	"A Swift Gallop through 20th Century Costume" How the fashions changed in this century, Janet Tierney guides the way.

If you can help or have any queries please contact Martin Hollingsworth on Tel. 01652 648435 or by e-mail enquiries@kirtoninlindseysociety.org.uk

Remember if you have any family stories, queries or ephemera that you would like help with or pass on to the Society please contact us.

Please come and join us we are a friendly and sociable group.



Your local specialist in nearly new, pre-owned, performance, luxury and family cars at competitive prices.

Great value car service:

- tyres
- cambelts
- tracking
- batteries
- aircon
- timing chains
- wheel alignment
- MOT . . . and more



CLASSIC

We are easy to find . . .
along Station Road
DN21 4BD

Phone:
01652 648429

Email:
sales@ggsteel.co.uk

OR book MOT online -
www.ggsteel.co.uk

We service all makes/models of cars & vans
Phone, email - or come in to meet us

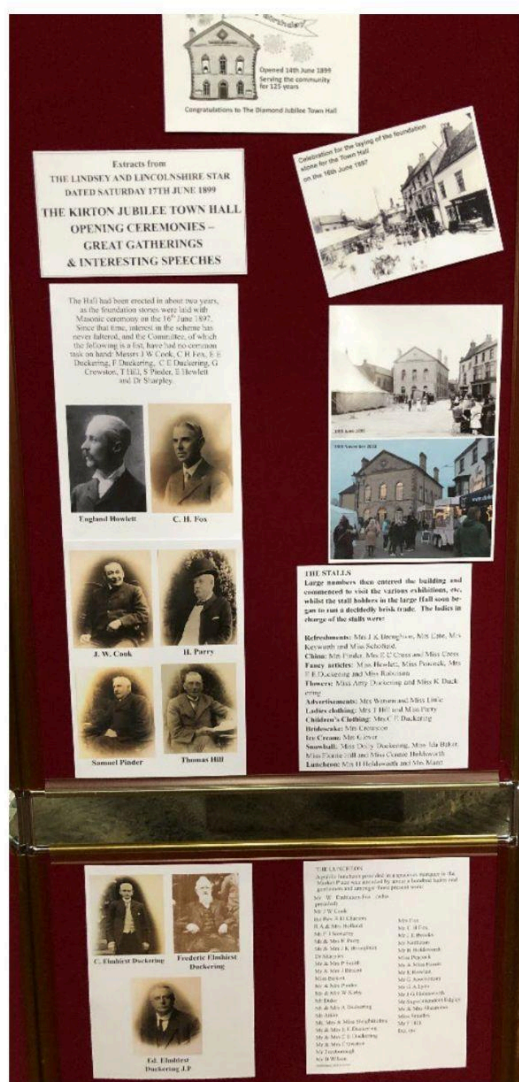
The Kirton in Lindsey Society is pleased to be supporting St Andrew's United Church again as part of the West Lindsey Churches Festival.

Heaven and Earth . . .

. . . will be the theme of this year's display in St Andrew's United Church, Kirton in Lindsey.

Please come along over the Festival weekend to see our beautiful Norman/Early English church. Climb the tower for stunning views over the town and countryside . . . search for angels in the churchyard . . . browse our archives (with an expert on hand to answer your questions). Enjoy the floral displays, bellringers, organ music, activities for children and light refreshments.

It is on Saturday and Sunday, 10-11 May (Open Saturday, 10am - 4.30pm; Sunday, 12.30 - 4pm)



Images are from last year's festival.

Further information from Jane Sheard:

janesheard.82@btinternet.com or from Martin Hollingsworth m.hollingsworth205@btinternet.com



Kirton in Lindsey Town Councillors 2024-2025

Cllr Hazel Fox – Mayor 2024-2025

Farringford, 18 Spa Hill, DN21 4BA

Telephone: 07966 787044

E-mail: kirtoncllrfox@outlook.com

Cllr Joy Kofoed – Deputy Mayor 2024-2025

Lowfield Close, Kirton in Lindsey

Contact via the Town Clerk only

Cllr Kathy Cooper

14 Southdale Close, DN21 4BS

Telephone: 01652 648123 (home)

07826 155237 (mobile)

E-mail: kathleen.cooper3@btinternet.com

Cllr Pat Frankish

1 North Cliff Road, DN21 4NJ

Telephone: 01652 649365 (home)

07836 528310 (mobile)

E-mail: pat.frankish@btinternet.com

Cllr David Garritt

Beckingham House, 27 Ings Road,

DN21 4BU

Telephone: 07824 889616 (business mobile)

E-mail: dsgarritt@gmail.com

Cllr Karen Gunn

Telephone: 01652 648363

E-mail:

karenlmetheringham@googlemail.com

Other contact via the Town Clerk only

Cllr Tony Kitchen

E-mail: ann_kitchen@sky.com

Other contact via the Town Clerk only

Cllr Suzanne Stephenson

3 Whitehoe Farm, Gainsborough Road,
DN21 4EN

E-mail: sstephenson074@gmail.com

Other contact via the Town Clerk only

There is currently **a vacancy** for a Town Councillor – **this will be filled via an election, as requested by at least ten residents in January**, and will be held on 27th March 2025. Further details about the election will be made available shortly online and in noticeboards.

All Councillors are contactable via the Town Clerk

The Town Council rent office space within the Diamond Jubilee Town Hall:

Town Council Office, Diamond Jubilee Town Hall, High Street, Kirton in Lindsey, DN21 4LZ

Public opening hours Tues & Thurs 12 noon to 4pm,

Clerk is available at other times by prior appointment.

Telephone: 01652 648978 / 07518 284173

E-mail: enquiries@kirtoninlindseytowncouncil.gov.uk

Find us on Facebook: "Kirton in Lindsey Town Council"

Website: www.kirtoninlindseytowncouncil.gov.uk



Daffodil Delight

Saturday 5th April 2025

9.30am to 12.30pm Town Hall, Market Place, Kirton in Lindsey



The daffodils should be in full bloom in your gardens and they'll be in flower in various guises until May. So why not bring some along and enter them into one of the competition classes in the 12th Daffodil Delight show hosted by KLAGs (**K**irton in **L**indsey **A**mateur **G**ardener**S**). There is a trophy to be won for the best exhibit in the show or you can just enter for the pleasure of showing off your blooms!

The classes for the daffodils and the special sections are shown below and it will be a suggested £1 donation per exhibit/entry (minimum 50p). Children's classes are free to enter.

Classes: 1) Miniature; 2) Large Yellow; 3) Large White; 4) Large Two Tone; 5) Large Multi Head; 6) Miniature Multi Head; 7) Pheasant Eye (pictured here from last year's show); 8) Large Double Yellow; 9) Large Double White; 10) Any other variety; 11) Vase of Daffodils (minimum 5) decorated for all-round effect, 12) One single Daffodil, 13) One pot of Flowering Daffodils (minimum of 3 bulbs).

For each class you enter, you need to bring 3 flowers and vases will be provided. If you are not sure what type they are, help will be on hand!

Class 14) Children's section (age 16 years or under) 3 mixed daffodils decorated for all round effect.

Special Classes:

- ❖ Photographic Competition on two themes, which are "new/young life" and "Your Town/villages in spring". Maximum size of photo 6" by 4" (150mm x 100mm) Limit of 2 images per entrant per class.
- ❖ Decorate a paper plate to make an image of a lamb. – limited to 2 per entrant (adults and children's classes).



Timetable:

- 🌸 9.30 to 10.15 entering and displaying
- 🌸 10.30 Judging of Classes
- 🌸 11.30 Prize giving
- 🌸 12.30 pm Close

There will also be Coffee/Tea and home-made cakes served by St Andrew's United Church volunteers.

For more information and details of the classes or other events on the day please call Sarah on 01652 409717 or e-mail sarah.wilkinson11@outlook.com or Vincent on 07931 127826 or Follow us on Facebook 'KLAGs (Kirton in Lindsey Amateur Gardeners)'



THE KIRTON IN LINDSEY DIAMOND JUBILEE TOWN HALL 125th ANNIVERSARY

Lincolnshire Place Names 20th Anniversary Quiz

The winner this year, with a top score of 38 out of 40 was Pam Jodko, who thoroughly enjoyed the quiz and said 'it stopped me reading for several days'.

It was close this year with only 5 marks separating all the entries.

Thanks to everyone that took part, we raised **£143** for the Town Hall.



Daffodil Delight

Saturday 5th April 9.30am - 12.30pm



*Kirton in Lindsey
Amateur Gardeners*

Kirton in Lindsey Town Hall

Celebrate spring: -



Enter your daffodils into a competition



Photographic Competitions (on a theme of 'New/Young Life' and 'Your Town/Village in Spring')



Support cancer care



Decorate a paper plate to make an image of a Lamb

14 classes for different types of daffodils

- suggested £1 donation per exhibit/entry (minimum 50p). Children's classes are free to enter
- Children's Section - 3 mixed daffodils, decorated for all round effect;
- Special Classes - Decorate a paper plate to make an image of a Lamb
- Photographic Competitions. — open to ALL (Max 2 per entrant in each class; Max size 6" x 4" or 150mm x 100mm)

Timetable for entrants:

- 🌸 9.30 to 10.15 entering and displaying
- 🌸 10.30 Judging
- 🌸 11.30 Prize giving
- 🌸 12.30 Close

Open to the public from 9.30 as well.

For more information call Sarah on 01652 409717 or Vincent on 01652 648468



Kirton in Lindsey Amateur Gardeners Meetings & News



The KLAGs 2025 season of meetings continues on Wednesday 19th March at 7.30pm, in the Town Hall, Market Place, Kirton in Lindsey.

This month the talk and presentation will be about **Gardening for Hedgehogs**. Sue Smith, from Retford in north Nottinghamshire, pays the club a visit to give advice and help on how to improve our gardens and make them safer for Hedgehogs, which are now classed as endangered and they are on the National Red Data List for wildlife species in this country.



At each meeting monthly competitions are held for members, this month it will be 'A vase of Spring Greens' (minimum of three stems).

Please come along and join the group who are a friendly bunch and very welcoming.

These are the next two meetings:

	Topic/Event	Speaker/details	Monthly Competition
Wed 16 th April	Medicinal Plants: The Medicine Chest in Your Back Garden	Hannah Sylvester	Three cut tulips
Wed 21 st May	The Greatest Show on Earth	Doug Stewart	Sprig of Blossom

A couple of dates for your diaries;

- ❖ morning of Saturday 5th April in the Town Hall it is the Daffodil Delight show (see separate article for more details);
- ❖ and on Saturday 10th May (9.30am to 11.30am), in the Market Place it is the club's Annual Plant Stall. Bedding plants, vegetable plants and much more. Bring along any spare plants to help raise funds for the club and find that missing gem of a plant for your garden.

For more details contact: Sarah Wilkinson, Secretary (01652 409717) or sarah.wilkinson11@outlook.com or Tracy Hughes (Chair) on 07831 179974 or Follow us on Facebook 'KLAGs (Kirtton in Lindsey Amateur Gardeners)



PC DOCTOR

Computer problems solved
in your own home

Virus and Spyware Removal

Broadband and Wireless

PC Cleanup

Hardware Repair

Networking, Data Recovery

Laptop Repairs (screens etc)

Established in 2000

Reliable Long Running Business

Now Based in Kirtton Lindsey.

07961572153

We are pleased to welcome Mini First Aid to KLASSIC Park. They will be running various workshops throughout the year covering Paediatric, Emergency and Baby & Child first aid. Visit their website lincolnshire.minifirstaid.co.uk for more details.

Kirton in Lindsey
Actively Supporting Sport
In the Community

KLASSIC

Crafts & Other Groups

Kirton Kreators Craft & Sewing Group

Contact Judith –
Email: jafreeborn47@gmail.com
Phone: 07519 090022

Art Class

Contact Tony –
Phone: 07895 992816

Companion Minds Dog Training

Contact Kate –
Website: www.companion-minds.com

Kirton WI

Contact Alison –
Email: alison.birkett@yahoo.com

First Kirton in Lindsey Scout Group

(Scouts, Cubs & Beavers)
Contact Daniel –
Email:
daniel.crawshaw@northlincsscouts.org.uk

Kirton Area Gaming Group

Contact Darren –
Email: info@kagg.co.uk

H & ME Creations

Contact Sarah –
Phone : 07920 525267
Emails : handmcreations@outlook.com

Wellbeing & Fitness

Yoga/Pilates

Contact Louise –
Text 07790 759003

Tai Chi

Contact May Lai –
Text Only 07952 578068

New Age Kurling & Cake

Contact – Phone: 0300 3656999 Email:
enquiries@livingconnections.life



Sport

Kirton Lindsey Table Tennis Club

Contact Val –
Email: valschofield27@aol.com
Website:
kirtontt.wixsite.com/kirtontabletennis

Kirton Bowls Club

Contact Bernard or Barbara –
Email: bernard.sims@hotmail.co.uk

Short Mat Bowls

Contact John –
Email: j.escreet77@btinternet.com



Field



Kirton Lindsey Junior Football Club

Contact –
Email: info@kljfc.co.uk
Website: www.kljfc.co.uk

KLOTS

Contact Adam Delsignore –
Mobile: 07484 680471

Over 30's Football

Contact Dan Gunn –
Mobile: 07845 594587
Email: kirtonover30s@gmail.com

Kirton in Lindsey Archery Club

Contact Daniel –
Email: coaching.klac@gmail.com
Website: www.klac.co.uk

KLASSIC contact details and to book the hall/field-

www.facebook.com/klassicpark/

Email: klassicinfo@aol.com Phone: 07936 936961

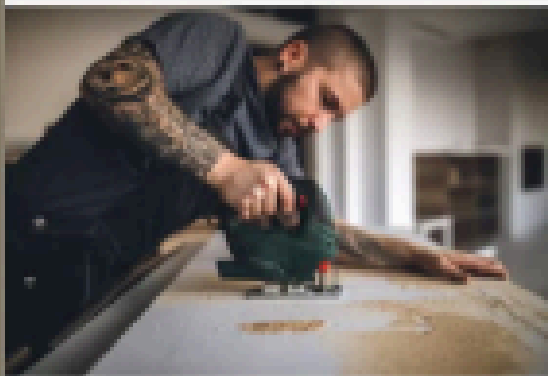
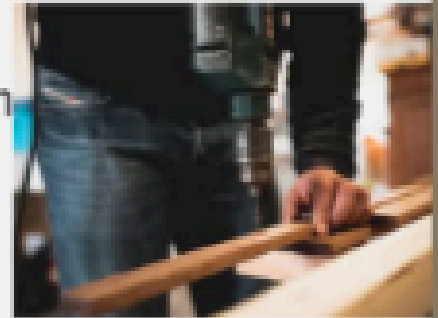
You can also text or WhatsApp using the above phone number.

Hire rates are very reasonable, with discounts for regular users. Please contact me for more information - Cheri

MEN IN SHEDS

Men In Sheds is a community group that aims to provide a space for people to ***socialise*** with and ***learn*** from similar people and to produce goods for yourself or others.

- *Learn* new skills and practices from people who share your interests
- Build *friendships* with like-minded people (who know what you're talking about)



- *Brainstorm* ideas with a new perspective
- Build *larger projects* in a team
- *Utilise tools* you may not have at home

Open to men and women alike, we would like to open our own shed here in **Kirton in Lindsey**. Find out more about Men In Sheds by attending the *meeting* on Thursday 13th March at the Community Cafe, St Andrews Church. These jobs can be lonely, and we aim to fix that.

Find out more at:

community@kirtoninlindseytowncouncil.gov.uk





Charity No.
1160832

125 Easter Draw

Please help the Town Hall celebrate
125 years of supporting the
community.

For tickets contact: Julia at
finance@kirtoninlindseytownhall.co.uk



or call in at the
Town Hall office Mondays
& Tuesdays 9am to
12 noon



Only 125 tickets
available. One winning
prize of £125



Numbers drawn on
Easter Monday 21st
April 2025

www.kirtoninlindseytownhall.co.uk

The

Singing for Pleasure

Choir



PRESENT A

SUMMER CONCERT

SONGS & MUSIC TO WELCOME THE WARMER DAYS

WEDNESDAY 7TH MAY 7.30PM

KIRTON IN LINDSEY

DIAMOND JUBILEE TOWN HALL

DN21 4LZ

Tickets: £7 (U16s FREE)

Bar & Raffle

From:

Mary Hollingsworth 01652 648435

or on the door

All raffle proceeds in aid of L.I.V.E.S



Good News!

You will remember we were very despondent about the future of Kirton First due to the increased costs of paper and printing, and so in January we printed a plea for help on our front cover.

The good news is that two very kind residents immediately got in touch, and each gave us a cheque which has helped, cheered us with their comments, and given us some extra breathing space to look at cheaper printing options.

One of the residents wrote a three-sided A 4 letter to the editor on some ideas which he felt might raise some more money and perhaps increase community input to the magazine. I will try to precis his letter!

Some of the suggestions:

1. When you write your will to leave a small legacy to Kirton First to ensure their will always be something other than Facebook from which to get news of our small town. It is not just older people who avoid social media, many young

people are very wary of it.

2. A guest editor occasionally, to have a point of view, or perhaps "Have a Say" or "Letting off Steam" column?

3. Perhaps approach the local Schools to see if they have any budding journalists? Ask them to advertise for their very own "Junior Reporters"?!

4. A "Bring and Buy" sale in the Town Hall? So many of us as we get older start wanting to de-clutter. It would need to be well organised. (He

and his wife acting as auctioneers.)

5. Have a scheme like the "The 200 Club" to boost funds?

Our concerned resident wanted to stress the

importance of having a local magazine which has room in it for individuals to express themselves, so that it is not too 'advert heavy'.

I hope I have extracted most of the ideas from the very

welcome letter, even though not so entertainingly written!

Maggie Davies

LARKRISE COTTAGE & CAMP SITE



Relatives visiting?
Do they need a
spacious fully equipped
home from home?

Also a seasonal camp site
is available

We are just 1 mile from Kirton Lindsey
Telephone John on **0773-092-7710** or
take a look at our website on
www.larkriseholidays.co.uk

Rates negotiable

Amanda's Home Hairdressing

In the comfort of your own home
All aspects of hairdressing

15 years salon experience
Reasonable price range

**BARBICIDE Covid19 certified for
safe working practices**



Phone: 01652 648940
Evenings only



Find us on Facebook
www.facebook.com/acechimneys

07594 353385

ACE CHIMNEY SWEEPS

- Chimney Sweeping • Bird Guards & Cows
- Chimney Repairs • Stove Servicing & Parts
- Nest Removal • Tar & Creosote Removal

AngelaPowell

The Lettings Specialists

Calling All
LANDLORDS

Our team has a wealth of local knowledge, coupled with experience and commitment to offering a friendly, professional service to all clients.

Contact us for a no obligation valuation and assessment of your property including advice on potential rental income.

Zoopla  rightmove

01652 654269 f t i y

www.angelpowell.co.uk



Creating confident, independent children through a journey in music and dance



Please get in touch to see how we can help your Dinky Dancer start their journey now

Contact us now at:
www.musicanddancejourney.com
dance@musicanddancejourney.com
Tel: 01652 648563

LARKRISE FARM SHOP

Your Local Sausage and pork products straight from the farm



Plus general groceries

JUST DOWN GAINSBOROUGH ROAD

Open nearly every day 9am to early evening

Phil Stephenson

Painter and Decorator
40 years' experience



10 Orchard Close
Kirton in Lindsey
Lincolnshire
DN21 4TL

07710 799645

Free Estimates



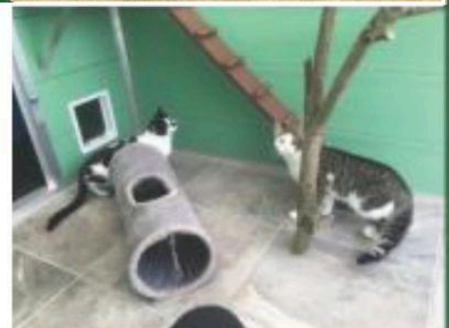
Corner Cottage Animal Boarding is a high quality, family-run business committed to ensuring your pet receives the highest standards of care.



Our spacious, heated kennels are hygienic, comfortable and cosy to cater for all the different breeds and characters of your dogs.

At the Corner Cottage Grooming Salon we are focused on providing high quality pet (dogs, cats and small animals) grooming and complete customer satisfaction.

Our superb purpose built cat accommodation consists of high quality reinforced high density polyethylene. This offers a superior finish to ensure the highest level of hygiene, and heat efficiency, offering cool conditions in the summer and warm conditions in the winter.



T:01652 648788

M: 07966 554323

pets@cornercottageboarding.co.uk

www.cornercottageboarding.co.uk

