

# Kirton First!

Kirton In Lindsey Community Newsletter

Volume 24 Issue 1 January 2026





EDUCATIONAL EXCELLENCE

# KIRTON ACADEMY

A NEW SCHOOL FOR OUR COMMUNITY



As we begin our second academic term as a new academy we would like to invite you to come and see the significant changes we have made.

School tours are the best way to get a feel for a school, you can visit lessons and meet our wonderful community.

If you would like to have a look around please email:  
[enquiries@kirttonacademy.co.uk](mailto:enquiries@kirttonacademy.co.uk)

[www.kirttonacademy.co.uk](http://www.kirttonacademy.co.uk)



## The George

Market Place  
Kirton-in-Lindsey  
DN21 4LX

Tel: 01652 240270

### Opening Hours

**Monday - Thursday**  
4.30pm – (Food 8.30) 10.00pm

**Friday** 4.00pm- (Food 8.30)  
11.00pm

**Saturday** 12.00 pm (Food 8.30)  
11.00pm

**Sunday**

**12.00 noon– Last orders 4.30 pm**

**Saturday now open all day from  
12.00 pm**

**Early Dinner Offer**

**20% OFF Total Bill**

(Includes alcohol)

**Bar Classics, Specials,  
Children's & Free From Menus**

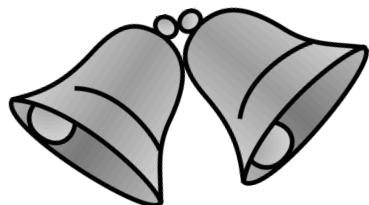
Offer available

Monday – Thursday 4.30pm – 5.30pm

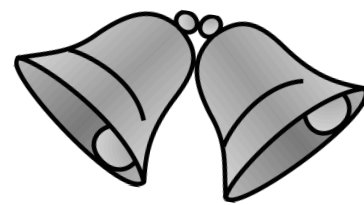
Friday 4pm – 4.45pm

Saturday 3pm - 4.45pm

Any offers not to run in conjunction with any other offers



## Happy New Year!!



We are looking forward to an exciting new year in Kirton First now, thanks to KLTC and our community Grant we can look to the future with more confidence.

We have some new features this year which we hope will be interesting and look forward to some feedback from readers. The first new item is a recipe each edition and the second is a Book Corner where we hope to have a book review in each edition. We have two local book groups and a W. I. book group who are going to do a review for our March edition. We will continue to include features on businesses and residents whose lives we want to celebrate. So many good things are happening in Kirton and so...

All the Very Best to One and All!

- Editor

### CONTACT

Email - Aidan Morton [kirtonfirst@gmail.com](mailto:kirtonfirst@gmail.com) 078564 49268

Adverts - Sue Smith [suetsmith12@yahoo.co.uk](mailto:suetsmith12@yahoo.co.uk) 074854 01433

### EDITORIAL TEAM

Maggie Davies 078337 76253 Aidan Morton 078564 49268

Sue Smith 0748540 1433 Viv Porter 077698 81165

Debbie Brelsford 079352 40952 Sue Law 077695 55571

**DELIVERY TEAM** - Please contact Debbie if you are likely to be away.

### DATES FOR COPY AND MAGAZINE DISTRIBUTION IN 2026

JAN COPY 12nd DEC 2025

DISTRIBUTION 2nd week January

MAR COPY 13st FEB

DISTRIBUTION 1st week March

MAY COPY 17th APR

DISTRIBUTION 1st week May

JULY COPY 19th JUN

DISTRIBUTION 1st week July

SEPT COPY 14th AUG

DISTRIBUTION 5st week August

NOV COPY 16th OCT

DISTRIBUTION 5th week October

***Together we have voice - singly we have none.***

# Important Contacts



## Doctors

Monday to Friday, Excluding public holidays 8:30am to 6:00pm  
Emergency calls only 8:00am to 8:30am  
6:00pm to 6:30pm

01652 648214 - Appointments and General Enquiries  
01652 241164 - Repeat Prescriptions Ordering (48 hours Notice)  
01724 700218 - Scotter Surgery  
111 - Out of Hours Service

## Chemist

G Payne - Chemist Opening Hours

Monday, Tuesday, Thursday, Friday 9:00am - 1:00pm & 2:00pm - 6:30pm  
Wednesday 9:00am - 1:00pm & 4:30pm - 6:30pm  
Saturday 9:00am - 1:00pm  
01652 648244

## Library

Monday - Closed Tuesday - 12:30pm to 5:00pm  
Wednesday - 11:00am to 5:00pm Thursday - Closed  
Friday - 9:30am to 3:30pm Saturday - 10:00am to 1:00pm

01652 648406

## Council

**Town Council (Clerk)**

01652 648978

Public drop in sessions at the Town Council office Tuesdays and Thursdays between 12-4pm. The Clerk is available to meet at other times by appointment.

**North Lincolnshire Council**

01724 297000

Refuse collections

Friday Week 1

Brown and Burgundy Bins

Friday Week 2

Grey/Green Bin and Boxes

Waste Disposal Site

Redbourne Mere (NB you may be asked for identification)

Open Friday, Saturday, Sunday, Monday, and Tuesday

Summer (1st March to 31 October)

10:00am to 6:00pm

Winter (1st November to 28th February)

10:00am to 4:00pm



## Travel

Bus services from Kirton to Lincoln & Scunthorpe - Details are available at stops or by phoning "Traveline" on 08712 002233

Copies of all bus services for Kirton are available free of charge at the library. The timetable for the 103 service was updated in Oct 2025.

Rail line 03457 484950

## Church

### ST ANDREW'S UNITED CHURCH

Rev Dr Michael Sheard 01652 648846  
Church Halls -enquiries- Heather Bunker 01652 648573  
General Enquiries Jane Sheard 01652 648846  
Website: [www.standrewsunitedchurch.org.uk](http://www.standrewsunitedchurch.org.uk)

### ST RADEGUNDS CHURCH, GRAYINGHAM

Services: 9am every Sunday  
Website: [www.achurchnearyou.com/grayingham-st-radegund](http://www.achurchnearyou.com/grayingham-st-radegund)  
Facebook: [www.facebook.com/radegundgrayingham](http://www.facebook.com/radegundgrayingham)

### ROMAN CATHOLIC WORSHIP ST MARY'S BRIGG

Parish Priest: Father Limnyuy Gamsi 01652 652221  
Kirton contact: Jean McFarlane 01652 648114  
Website: [www.bartonandbriggcatholicchurches.org](http://www.bartonandbriggcatholicchurches.org)

## Miscellaneous

Appletree Day Nursery	01652 649185
Archery Club	secretary.klac@gmail.com
Art Club	01652 649549 or 07849 827255
Bloom: Kirton In Lindsey	tanya.KLIB@outlook.com or 07855 120896
Brownies & Guides	01652 648800
DENTIST (Dr Bagga)	01652 640291
Foodbank	07396 738436
Happy Days Nursery	01652 648228
Kirton Academy	01652 648276
Jellitots Rachel	Rachel.colin@hotmail.co.uk
Kirton Lindsey JFC	info@kljfc.com
Kirton Primary School	01652 648792
KLASSIC Venue Manager	07936 936961
Mini Bloomers	mini_bloomers@outlook.com
Neighbourhood Police Officer	paul.topham@humbersidepolice.uk
POLICE (Non emergency)	101
POST OFFICE	01652 648234
Scouts Group	daniel.crawshaw@northlincsscouts.org.uk
Scunthorpe Hospital	01724 282282
Table Tennis	07776 247674
Town Hall	07752 246255
Vetinary Surgeon	01427 612662

## Thanks Pat

In September last year Dr. Pat Frankish, after twenty years of service, relinquished the position of chair of Kirton First! Pat was there at the inception of the magazine and played a pivotal role in ensuring it's continuation. At the same time Pat was also one of our many volunteer deliverers. So she has definitely "paid her dues" as the saying goes. However, Pat's participation in the community is ongoing as she is currently a Town Councillor and has been since 2015. She also served between 2003 and 2013 and was Mayor for two terms from 2006 to 2009 and again from 2019 to 2022. Pat is a Baptist deacon and is also involved in other local groups including the Kirton Society and KLAGGS, where she was the driving force in setting up Kirton in Bloom.

We all appreciate what you have done, and continue to do, for Kirton.

*The Editorial Committee*

### Regular activities at the Town Hall

#### Weekly:

##### **Town Hall Office Open -**

Mondays & Tuesdays 9am - 12pm

##### **Town Council Office Open -** Tuesdays 12 - 4pm

(Clerk 01652 648978)

##### **Evergreens -** Tuesdays 2-4pm (Barry 07876 332188)

##### **Seated Exercise -** Wednesdays at 10-11am

(NLC Active Communities Team: 01724 297270)

##### **Tai Chi -** Wednesdays 11.15-12.45

(George -01427 617171)

##### **Rock Choir -** Wednesdays 7-8.30pm

(Register at: <https://rockchoir.com/>)

##### **Pilates with Louise -** Thursdays 10 -11am

(Louise 07790 759003)

##### **Town Council Office Open -** Thursdays 12 - 4pm

Clerk 01652 648978)

##### **Slimming World -** Fridays 9.30- 11.30am

##### **Community Shop -** Fridays 1-1.45pm.

#### Monthly:

##### **Tea Dance** 2nd Monday 2-4pm

(Jenny 01652 640281)

##### **WI -** 2nd Tuesday 7.30-10pm (Gill 07714 240053)

##### **Kirton in Lindsey Society -** 4th Tuesday 7.30-9.30pm

(Martin 01652 648435)

##### **KLAGS (amateur gardeners) -** 3rd Wednesday 7.30-9.30pm

(Sarah 01652 409717)

##### **Cupcakes, Coffee and Chat -** 1st Saturday 9.30 - 12 noon

##### **Town Hall Craft Club -** 4th Saturday 1-4pm

##### **Town Hall Live -** (Brian - 01652 649230)

Information correct at the time of going to press but situations can change. Any later developments will be on our website and short-notice changes will be posted on our Facebook page so do keep checking. If in doubt, contact Jo on [info@kirtoninlindseytownhall.co.uk](mailto:info@kirtoninlindseytownhall.co.uk) or ring **07752 246255**.





# North Lincolnshire Libraries

## Kirton in Lindsey Library

Our library is a safe and welcoming space for all and offers a range of services including:

- Access to computers
- Children's Library and crafting activities
- Adult fiction and non-fiction books for loan
  - WiFi
- Blue Badge applications, by appointment only
- Blue Badge evidence scanning and photographs
- Travel pass applications, by appointment only
  - Information, Advice and Guidance
  - Scanning, printing, and photocopying

\* Weekend opening hours are for borrowing and returning books only.  
Information, advice and access to computers and printers is available on weekdays \*



Find opening times at <https://www.opac.northlincs.gov.uk/our-libraries> or download the North Lincolnshire Libraries app.

20 King Edward Street  
Kirton in Lindsey  
Gainsborough  
DN21 4NQ

**01652 648406**  
**[library.enquiries@northlincs.gov.uk](mailto:library.enquiries@northlincs.gov.uk)**

**North  
Lincolnshire  
Council**  
[www.northlincs.gov.uk](http://www.northlincs.gov.uk)



## **Kirton in Lindsey Town Council - January 2026 update**

### **Civic Dinner 2026**

The Mayor will hold her Civic Dinner on Saturday 7<sup>th</sup> March, this is a charity event to raise funds for the Royal British Legion Kirton in Lindsey which is the Mayor's chosen charity for her term of office. If you would like more information about this event, please contact the Assistant Clerk.

### **Councillor Co-Option**

A vacancy for one Town Councillor with Kirton in Lindsey Town Council arose following the resignation of Cllr Tony Kitchen in October. At the December Full Council meeting one application for Co-Option was put forward. The meeting took place after the editorial deadline for this edition of Kirton First, so more information will follow in the next issue.

### **Winter Weather**

Salt bins are provided, stocked and refilled by North Lincolnshire Council. Don't leave a salt bin running low as you never know when you or someone else might need to use it.

If a salt bin is in need of refilling, contact North Lincolnshire Council with the exact location on Tel: 01724 297000 or online via their website. Let's work together to keep Kirton in Lindsey safe and moving through the winter.

### **Speed Indicator Devices**

The Town Council is currently looking at funding for speed indicator devices through the Police and Crime Commissioner and/or North Lincolnshire Council. North Lincolnshire Council Highways have carried out surveys to put forward recommendations for positioning and sites at Redbourne Mere, South Cliff Road and North Cliff Road are currently under consideration. Look out for more information in due course on this project.

### **Cemetery Memorial Safety Testing**

Memorial safety testing in the Cemetery was last carried out in 2021. Kirton in Lindsey Town Council, as the Burial Authority, has a duty under Health and Safety legislation to control the dangers that exist in the cemetery. This includes work to actively remove hazards posed by unstable memorials which is recommended to be carried out at least every five years. The owner of the memorial is responsible for maintaining the memorial in good condition. If you would like further information on this work, please get in touch.

### **Dog Fouling and Litter**

Dog fouling and litter are a constant issue, not only for Kirton in Lindsey but across the nation. A simple act of responsibility goes a long way. Picking up after your dog is not just courteous – it's essential for public health, the environment, and our shared community spaces. Bagged dog waste can go in any public bin – not just the designated dog waste bins. If there's a bin nearby, use it or take it home with you! The same clearly goes for litter, the park or street didn't provide you with the item, you brought it along – so dispose of all litter responsibly. Leaving dog mess behind pollutes our town, spreads disease, and gives responsible dog owners a bad name. Please do your part – bag it, bin it, and help keep our spaces clean and safe for everyone. North Lincolnshire Council have provided signage to remind everyone about keeping the area clean, if you know of hotspots, we can usefully display these, please get in touch!

### **Stay Informed!**

Keep in touch about the work of the Town Council on our website

[www.kirtoninlindseytowncouncil.gov.uk](http://www.kirtoninlindseytowncouncil.gov.uk) and Facebook page – just search for 'Kirton in Lindsey Town Council'. Information about meetings, decisions and our activities is always available to you.



## Christmas Festival

The annual Christmas Festival and Lights Switch on was held on Sunday 30th November, thanks go to everyone involved from volunteers who made it happen, stall holders, entertainers, local businesses who opened and of course everyone who came along. The Town Council is now in the process of looking at new contracts for the Christmas lights displays for future years and the planning of this years event. If you would like to be involved, please get in touch. Contact details are on the Councillors details page in this issue of Kirton First.

## Christmas sponsorship

We are seeking businesses, groups or organisations who would like to be involved with sponsorship of town events, including the Christmas Festival. In previous years the A Team have generously funded the Town Christmas Tree and local businesses and supermarkets donated to provide gifts for the children from Santa. These businesses are no longer able to do this. If you would like more information or can help in anyway, please get in touch with us.

## Images from the Christmas Festival



Photo by kind permission of Sky Views Media

Above: The eye in the sky view from the Pottery, through the Market Place & across to Sylvester St showing the extent of the event. Below: local Eco Warrior Iris, winner of the Summer Gala Fancy Dress competition switches on the lights & a special appearance of the naughty goats from Feather & Hoof Haven.







**Independent suppliers of  
LPG cylinders and  
accessories for home, farm,  
business and industry.**

**Competitive prices, no  
bottle deposit, excellent  
service.**

Call Jason on 07747 471750  
or email: [midlincsfuels@gmail.com](mailto:midlincsfuels@gmail.com)

North Cliff Farm, North Cliff Road,  
Kirton Lindsey



**FREE and  
prompt  
local  
delivery of  
LPG**



## **McLoughlin Piano Tuning**

**CGLI FSB MPTA**

**07876 661475**

**07964 368186**

**01724 336179**

**[www.mcloughlinpianotuning.co.uk](http://www.mcloughlinpianotuning.co.uk)**

**GGSTEEL.CO.**

Your local specialist in nearly new, pre-owned,  
performance, luxury *and* family cars  
at competitive prices.

### **Great value car service:**

**tyres**

**cambelts**

**tracking**

**batteries**

**aircon**

**timing chains**

**wheel alignment**

**MOT . . . *and more***



**We are easy to find . . .  
along Station Road  
DN21 4BD**

**Phone:  
01652 648429**

**Email:  
[sales@ggsteel.co.uk](mailto:sales@ggsteel.co.uk)  
OR book MOT online -  
[www.ggsteel.co.uk](http://www.ggsteel.co.uk)**

**We service all makes/models of cars & vans  
Phone, email - or come in to meet us**



# Castle

Building & Garden  
Maintenance

All Types of Work Undertaken

Brickwork, Roofing, Joinery  
Decorating, Plastering  
and  
Garden Work

All Jobs Considered



Call Andy on  
**07852 190091** or  
**01673 818543**

LARKRISE COTTAGE & CAMP SITE



Relatives visiting?

Do they need a  
spacious fully equipped  
home from home?

Also a seasonal camp site  
is available

We are just 1 mile from Kirton Lindsey  
Telephone John on **0773-092-7710** or  
take a look at our website on  
[www.larkriseholidays.co.uk](http://www.larkriseholidays.co.uk)

Rates negotiable

## NIGEL ALLEN PLUMBERS LTD

SERVICE, REPAIR AND  
INSTALLATION OF GAS  
APPLIANCES

POWER FLUSHING

HEATING INSTALLATIONS AND UPGRADES

LANDLORD GAS SAFETY CHECKS

TEL: 07850 559801

EMAIL: [nigel\\_allen123@hotmail.co.uk](mailto:nigel_allen123@hotmail.co.uk)

*Gas safe no is 301921*



Creating confident, independent  
children through  
a journey in music and dance



Please get in touch to see how we  
can help your Dinky Dancer start  
their journey now

Contact us now at:  
[www.musicanddancejourney.com](http://www.musicanddancejourney.com)  
[dance@musicanddancejourney.com](mailto:dance@musicanddancejourney.com)

**Tel: 01652 648563**



## Town Hall Thanks Two Long-serving Trustees

At our AGM in October, we said goodbye to Jenny Cripps and Brenda Tyzack who left the Trustee Board after over 20 years' service. We couldn't let this moment pass without saying 'thank you' so, at the December Tea Dance, we had a little presentation of a winter planter and chocolates to mark the event. As you can see from the picture, they were both surprised and delighted!



Jenny Cripps (left) and Brenda Tyzack  
receiving their presents

Both have been stalwarts of the Board and Jenny's relationship goes back even further as a key member of the Friends of the Town Hall group which spear-headed the fundraising effort to raise over £1.2 million to allow the extension and refurbishment of the Town Hall to go ahead. For these efforts she was awarded an MBE.

However, it's not really goodbye, merely 'auf wiedersehen', as both are remaining as general volunteers and

will continue to be involved in activities at the hall. Volunteers are the life-blood of the Town Hall and without them we could not provide such a variety of events and activities for the town so a big 'Thank You' to all.

Mary Hollingsworth, Chair of Trustees





EAT!

Alright so how many of you are sitting there thinking I never want to see another turkey sandwich, Quality Street or mince pie again, ever...well not for the next 11 months at least anyway!

So its a new year...welcome 2026 and Kirton First welcomes a new regular feature...EAT



Easy  
And  
Tasty

This issues recipe is just that Easy And Tasty and has been a family favourite for over 50 years.

A very simple Apple Cake, which can be baked in a tin as a 'cake' or cook it as a pudding in a glass ovenproof dish.

Heat your oven to 180/160 (fan)/gas 4

Grease your chosen tin or dish (8")

Into a bowl put 145g butter/soft margarine and 145g caster sugar, cream together

Gradually alternately add 1 beaten egg and 145g self raising flour, mix well. If the mixture needs loosening, add a glug or two of milk. Peel, core and chop a medium apple. Bramleys are great for this as they hold their shape in the mix. Add this to the sponge mix and mix well. Put into your dish/tin and bake for 20 to 25 minutes. Should be well risen, golden and firm to touch.

Can be served hot or cold, and is delicious with custard, cream or ice cream.

Will stay moist for several days stored in airtight container in the fridge.

ENJOY!!



## Ballroom Dancing for All

**2nd Monday of each month  
commencing 2pm - 4pm.**



Come and trip the light fantastic, good for mental and physical health. No age limit. Tables decorated with fresh flower posies and refreshments served at your table, Tea, Coffee and biscuits . There is also a raffle on entry if you wish to participate Male dancer will partner ladies if they wish to dance with a male partner.

A good social afternoon all for the price of £4 plus £1 for raffle tickets



Administered by  
Kirton in Lindsey Town Hall  
Registered Charity No: 1160832

**Are you in the midst of a crisis and  
need a short term supply of food?**

**TEXT 'HELP' TO  
07396 738436**

**We are here year-round for everyone in  
Kirton in Lindsey.**

**(We are unable to cover other areas).**

**You do not need a referral and  
our service is entirely confidential.**

**We can only deliver Monday-Friday.**



Burton & Dyson have been providing legal advice to individuals and businesses in Lincolnshire for more than 150 years.

No two clients are the same, which is why our services are individually tailored to meet your exact needs.

We pride ourselves on building strong and enduring relationships with our clients and look forward to being able to assist you, whatever your requirements.

**Our specialist services include:**

- Business & Employment
- Commercial property
- Moving home
- Estates & Probate
- Wills & Trusts
- Powers of Attorney
- Family & Child Care
- Fixed Fee Divorces
- Notary Public

**You can get in touch with us in any of the following ways;**

**Call 01427 610761 | Email [info@burtondyson.com](mailto:info@burtondyson.com) | Visit 22 Market Place, Gainsborough**

**[www.burtondyson.com](http://www.burtondyson.com)**

22 Market Place • Gainsborough • Lincolnshire • DN21 2BZ  
01427 610761 • [info@burtondyson.com](mailto:info@burtondyson.com)



# PC DOCTOR

**Computer problems solved  
in your own home**

**Virus and Spyware Removal**

**Broadband and Wireless**

**PC Cleanup**

**Hardware Repair**

**Networking, Data Recovery**

**Laptop Repairs (screens etc)**

**Established in 2000**

**Reliable Long Running Business**

**Now Based in Kirton Lindsey.**

**07961572153**



**TOWN  
HALL  
LIVE**

**Bringing the best in Folk, Roots & Americana music from America, Canada, Europe and the UK to Kirton**

**FRIDAY 30<sup>th</sup> JANUARY – ROBERT VINCENT**

**CELEBRATING TOWN HALL LIVE's 200<sup>th</sup> CONCERT**

Robert Vincent is one of the UK's finest songwriters. His music is deeply rooted in personal and social narratives. Robert is a captivating live performer. Recently he received an invitation to support Robert Plant & The Saving Grace on their upcoming European and UK Tour. In January 2025 he was announced as winner of 'UK Song of the Year' at the UK Americana Awards for his song 'Follow What You Love & Love Will Follow' which is on his latest album 'Barriers'. He will perform as a trio at our concert. (£17)



**FRIDAY 20<sup>th</sup> FEBRUARY - JOSHUA BURNELL**



Joshua makes retro pop-folk rock for the modern world. His music would fit comfortably in a Peter Gabriel era of Genesis. Josh and his band love what they do and it is infectious. Expect melodies drenched in warm retro-synth textures, reverb guitars, lush harmonies and words that make you think. The band are festival favourites, leaving many a stage to standing ovations. Our concert is one of thirteen dates on their 'Misty Mountain Tour' to celebrate Josh's new album 'Lend An Ear (Revisited)'. (£17)

**FRIDAY 13<sup>th</sup> MARCH - THE GUILTY MEN**

The band is made up of five of the finest musicians in the country, who in the 70's and 80's played in some of the biggest groups around. Between them they have played over 10,000 gigs, recorded thousands of songs and made countless Radio and TV appearances. They got together in 2022 and had a very successful 20 date UK tour with many venues sold out. Since then they have played several UK Tours, the latest of which was a 12 date October 2025 tour. (£17.50)



**TICKETS FOR ALL CONCERTS CAN BE PURCHASED FROM:**

**Brian on 01652 649230 or [brianchudley@btinternet.com](mailto:brianchudley@btinternet.com), Morrison's Daily in Kirton in Lindsey Market Place or [www.wegotickets.com](http://www.wegotickets.com)**

**For information on the full programme visit our website at**

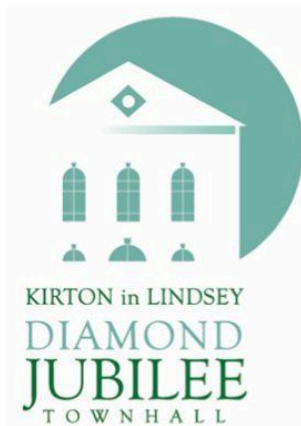
**[www.townhalllive.co.uk](http://www.townhalllive.co.uk)**

**Subscribe to our mailing list with regular updates on upcoming concerts**

**Follow us on Facebook**



# COMMUNITY SHOP



**Kirton in Lindsey Town Hall**  
**Every Friday**  
**1pm - 1.45pm**

A different selection of food each week  
Each item is allocated a points value



**16 points for £6**  
**8 points for £3**

# DRY AMD?

(AGE-RELATED MACULAR DEGENERATION)

## TREATMENT AVAILABLE NOW!

**Hospital Grade Advanced  
OCT Eye Exams**

by Dr Janjua

**Specialist Lenses  
For Various  
Eye Conditions**

**Widest Variety  
of Frames  
in Brigg**

**O'BRIEN'S  
OPTICIAN  
ESTD.1979**

**enquiries@obriensopticians.co.uk  
www.obriensopticians.co.uk  
43/44 Wrawby Street,  
Brigg,  
North Lincolnshire DN20 8BS**

**01652 653 595  
01652 649 024**





# CLEATHAM HALL NEWS

## Celebrating Life at Cleatham Hall

### **Celebrating Family and Friends, Birthdays and Anniversaries.**

Feel relaxed and enjoy the hospitality we are renowned for while enjoying a relaxing meal. So, if there are just 2 or 52 of you, contact us by email or phone to book your own personal celebration.

#### **Restaurant Opening Times:**

Wed - Sat: 12pm - 8:30pm

Sunday Lunch  
12pm - 4pm

Dine and Stay packages available for both groups or couples to enjoy a special occasion of get together.

The Restaurant is open daily from Wednesday to Sunday. Watch out for our Autumn menus starting in September.

Brunch served from 9 – 11am, Lunch served from 12 to 3pm,  
Afternoon Teas from 1 to 4pm  
Dinners from 6 to 8.30 pm

See our website at [www.cleathamhall.com/events](http://www.cleathamhall.com/events) for our menus and pricing

To book call: 01652 649402 or email: [enquiry@cleathamhall.com](mailto:enquiry@cleathamhall.com)



Cleatham Hall, Cleatham, North Lincolnshire, DN21 4JS

[www.cleathamhall.com](http://www.cleathamhall.com)

Tel: 01652 649402

Email: [enquiry@cleathamhall.com](mailto:enquiry@cleathamhall.com)

## Christmas – The Aftermath

As we look at tightening our belts financially we find, physically, they need moving up a notch! Along with the rest of the country our over-indulgence is showing in tighter fitting clothes and a general sluggish feeling. Losing weight and exercising more are, perhaps, the most made New Year's Resolutions. Whilst some people are motivated to lose weight on their own others may find they need the support of a group.

Kirton is lucky in that a Slimming World group meets in the Town Hall every Friday morning. The weigh-ins are confidential between the member and group leader and there is no obligation to stay to the meeting, if that's not your thing. However, the support of the consultant and members and shared experience of the ups and downs is most beneficial. It can be quite a social event as well and is a good way to make new friends with many members heading to one of the local cafes afterward for a drink, or other treat if the scales have been kind.

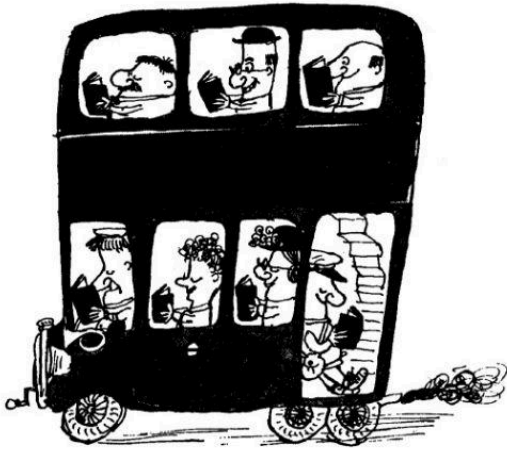
There's no time like the present so make that decision now because losing weight improves energy levels, relieves joint pain and helps with the general feeling of well-being. It can help prevent the onset of type 2 Diabetes and has even been known to reverse the effects. What more reasons do you need?

---

## Remembering Local Businessman

Prominent local garage owner, Geoff Steel, sadly passed away in October 2025 at the age of 76. GG Steel recently celebrated 50 years in business, most of it in premises in Kirton. Geoff served a mechanical apprenticeship in Lincoln before graduating from Loughborough College with the highest mechanical engineering qualification at that time. He started his own business in his early twenties buying and "doing up" cars for re-sale. His first garage was at Caenby Corner prior to setting up business premises on Ings Road, Kirton, where he remained until 1992. Geoff's interest in cars extended beyond his day job and he began to set up and successfully race rally cars. He then moved onto competing in the British Touring Car Championship and the British GT Cup. In 1992 the business moved to new, purpose built, premises on Station Road. His mechanical and racing expertise was in great demand and he started a new venture preparing cars for other drivers with his racing manager, Will, and cousin, Rob Steel whilst Andy looked after the general car sales side. Geoff's daughters are continuing in the family run business with Rob, Will and Andy still at the helm.





# Book Corner

**“At the Edge of the Orchard ” by Tracy Chevalier**

Some of Tracey Chevalier’s books have been made into films which you may have seen. The Girl with the Pearl Earring was one, about the artist Vermeer, and Remarkable Creatures another. It told the story of Mary Anning, the twelve year old who discovered the first complete skeleton of an ichthyosaurus on the Dorset coast in the early 19<sup>th</sup> century.

In this vividly written novel the Goodenough family, second generation immigrants, have settled in the muddy swamps of Ohio in 1830 where their wagon got stuck! It is a story of the family battling against the odds to establish an orchard. If they managed to get 50 apple trees established they would be

granted the land. James loved the sweet eating apples and Sadie the “spitters” or the ones to make cider with! However after 9 years of toil and family strife Robert Goodenough, the youngest son heads further west to California where the “Gold Rush” was at it’s height. In the Redwood and giant Sequoia groves he met William Lobb who was there collecting seeds and sending them back to England. He then worked for him and sent seeds of the famous Sequoia to England as they were fashionable and prized by the aristocracy to

plant on their estates. It is a story of migration of people and of trees. A really interesting book if you like pioneering history, family drama, and apples!

*- Editor*



# AMARA CARE

Supporting Meaningful Lives...

**Amara Care is a Domiciliary Care Agency located in North Lincolnshire and Lincolnshire registered with the Care Quality Commission.**

**We provide services for:**

- Adults with physical disabilities
- Adults with sensory loss including dual sensory impairment
- Adults with mental health issues
- Adults with learning disabilities
- Children and their families
- Dementia
- Older adults

**We take referrals from:**

- Individuals
- Social Services
- Health Services
- Direct Payments
- Individual Budgets
- Independent Living Fund
- Private arrangements

**Support Services Available:**

- Up to 24 hour support packages
- Personal care
- Medication care / support to attend medical / GP appointments
- Help with household tasks
- Support getting in and out of bed
- Shopping
- Preparing meals
- Trips out and keeping active
- Tenancy support

**Looking for a Career  
in Support Work?**

Please contact us for  
our current vacancies!

If you are looking to arrange support for yourself or someone you know, or if you would like further information on any of the services we have to offer, please contact us on:

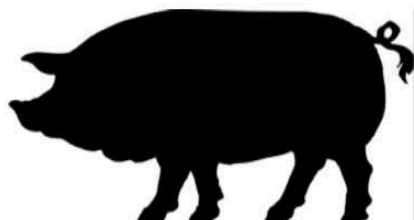
**Tel: 01652 648335**

**Email: [admin@amaracare.co.uk](mailto:admin@amaracare.co.uk)**

**Artemis House, 25 High Street, Kirton in Lindsey, DN21 4LX**

## LARKRISE FARM SHOP

Your Local Sausage and pork products straight from the farm



Plus general groceries

**JUST DOWN GAINSBOROUGH ROAD**

Open nearly every day 9am to early evening



### TIGHE GROUP OF COMPANIES

**SHOT BLASTING & SPECIALISED COATINGS, DOMESTIC, MARINE & INDUSTRIAL PAINTING CONTRACTORS**

Jack Tighe Ltd & Jack Tighe Decorating Ltd  
Redbourne Mere, Kirton Lindsey  
Tel: 01652 640003 Fax: 01652 648159

*Shop Applied Specialised Coatings:*

Scunthorpe Works  
Tel: 01724 861879 Fax: 01724 280005

Doncaster Works  
Tel: 01302 880360 Fax: 01302 880370

[www.jacktighe.com](http://www.jacktighe.com)  
[sales@jacktighe.com](mailto:sales@jacktighe.com)

## R & A Accountancy Services (Lincs) Ltd

Small & Friendly with 30 years + experience

We specialise in providing a personalised accounting and taxation service for sole traders, partnerships, sub-contractors, CIS tax refunds and individuals.

We can tailor our service to offer:-

- ☆ Year End Accounts
- ☆ Self Assessment Tax Returns
- ☆ VAT Returns
- ☆ And much more...

Call us today - Your initial consultation is free!!

Telephone: 07932 089256

Email: [richard@ra-lincs.co.uk](mailto:richard@ra-lincs.co.uk)

# 07594 353385



Find us on Facebook

[www.facebook.com/acechimneys](http://www.facebook.com/acechimneys)



## ACE

CHIMNEY SWEEPS

- Chimney Sweeping
- Chimney Repairs
- Nest Removal
- Bird Guards & Cowls
- Stove Servicing & Parts
- Tar & Creosote Removal



**Kirton in Lindsey**  
**Actively Supporting Sport**  
**In the Community**

# KLASSIC

KLASSIC Art Group are now welcoming crafters to come along and join them too. They meet at KLASSIC Park on Thursday mornings, 9am to 12pm. Not sure if it's the right group for you? Nip in and say hello, they are a lovely bunch and willing to help.

**KLASSIC contact details and to book the hall/field-** Email: [klassicinfo@aol.com](mailto:klassicinfo@aol.com) Phone: 07936 936961  
[www.facebook.com/klassicpark/](http://www.facebook.com/klassicpark/) You can also text or WhatsApp using the above phone number.  
Hire rates are very reasonable, with discounts for regular users. Please contact me for more information - Cheri

## **Babies & Children**

### **Lullababy**

Contact Jasmine -

Email: [lullababy.jasmine@outlook.com](mailto:lullababy.jasmine@outlook.com)

### **First Kirton in Lindsey Scout Group**

(Scouts, Cubs & Beavers)

Contact Sarah -

Email: [geckirtonscouts@yahoo.com](mailto:geckirtonscouts@yahoo.com)

### **Cook Stars**

Contact Helen -

Email: [helen.walker@cookstars.co.uk](mailto:helen.walker@cookstars.co.uk)

## **Wellbeing & Fitness**

### **Soundbath**

Contact Louise -

Text 07790 759003

### **Tai Chi**

Contact May Lai -

Text Only 07952 578068



## **Crafts & Others**

### **Kirton Kreators Craft & Sewing Group**

Contact Judith -

Email: [jafreeborn47@gmail.com](mailto:jafreeborn47@gmail.com)

Phone: 07519 090022

### **Art & Craft Group**

Contact Tony -

Phone: 07895 992816



### **Companion Minds Dog Training**

Contact Kate -

Website: [www.companion-minds.com](http://www.companion-minds.com)

### **Kirton WI**

Contact Alison -

Email: [alison.birkett@yahoo.com](mailto:alison.birkett@yahoo.com)

### **Kirton Area Gaming Group**

Contact Darren -

Email: [info@kagg.co.uk](mailto:info@kagg.co.uk)



### **Mini First Aid**

Contact Zoe -

Email: [zoe.reddin@minifirstaid.co.uk](mailto:zoe.reddin@minifirstaid.co.uk)

## **Sport**

### **Kirton Bowls Club & Short Mat Bowls**

Contact Bernard or Barbara -

Phone: 07931 383228

Email: [bernard.sims@hotmail.co.uk](mailto:bernard.sims@hotmail.co.uk)

### **Kirton Lindsey Table Tennis Club**

Contact Val -

Email: [valschofield27@aol.com](mailto:valschofield27@aol.com)

Website: [kirtontt.wixsite.com/kirtontabletennis](http://kirtontt.wixsite.com/kirtontabletennis)

### **Kirton Lindsey Junior Football Club**

Contact -

Email: [info@kljfc.co.uk](mailto:info@kljfc.co.uk)

Website: [www.kljfc.co.uk](http://www.kljfc.co.uk)

### **KLOTS**

Contact Adam Delsignore -

Phone: 07484 680471

### **Adult Football**

Contact Joe -

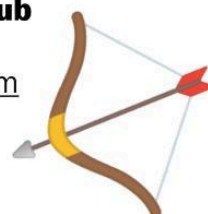
Email: [berridge.joe@googlemail.com](mailto:berridge.joe@googlemail.com)

### **Kirton in Lindsey Archery Club**

Contact Daniel -

Email: [coaching.klac@gmail.com](mailto:coaching.klac@gmail.com)

Website: [www.klac.co.uk](http://www.klac.co.uk)





# Frankish Psychological Services

Promoting Independent Living



Peggy's

Counselling

## Psychology & Assessments

All Referrals welcome  
including self referrals

**NO LONG WAITING LIST**

**Official Diagnosis using the  
NICE guidelines & DSM5  
criteria.**

- *Autism Assessments*
- *ADHD Assessments*
- *WISC assessments*
- *Therapy*
- *and more*

## Counselling and Psychology available:

***Face to Face and Online  
therapy appointments  
available!!***

- *Person centered approaches*
- *A safe space to talk*
- *Supporting adults ,children and families*
- *Mental Health Support*
- *Supervisions*
- *lots more to offer*



 **01652 648335**

 **[admin@patfrankish.co.uk](mailto:admin@patfrankish.co.uk)**

 **Frankish Psychological & Counselling services**



**Artemis House, 25 High Street, Kirton in Lindsey, DN21 4LX**



Bring this Voucher with you to your first appointment to receive **20%** off your first therapy appointment.

**Please note this offer is only available for therapy only, assessment fees apply.**



The British  
Psychological Society



'Peggy's Counselling' and 'Frankish Psychological Services' are trading names of Amara Care Limited.





Funeral Director N.A.F.D

**J. S. Machin**

*24 HOUR PERSONAL SERVICE  
PRIVATE CHAPEL OF REST*

*A Family Business Serving Kirton in  
Lindsey and the  
Surrounding Area for over 60 years*

*GOLDEN CHARTER PRE-PAID  
FUNERAL PLANS AVAILABLE*

*5 March Street, Kirton in Lindsey  
01652 632205*

**Angela Powell**  
The Lettings Specialists

Calling All  
**LANDLORDS**

Our team has a wealth of local knowledge,  
coupled with experience and commitment to  
offering a friendly, professional service to all clients.

Contact us for a no obligation valuation and  
assessment of your property including advice  
on potential rental income.

**Zoopla**



**rightmove**

**01652 654269**

**www.angelpowell.co.uk**

  
**KATHRYN DEAN THERAPIES**  
SPORTS & REMEDIAL

**KATHRYN DEAN  
SPORTS & REMEDIAL  
THERAPIES**

North Cliff Farm  
North Cliff Road  
Kirton Lindsey  
Lincolnshire

Tel: 07747 471752  
Email:

kathryndean18@gmail.com  
New website coming soon!



**Soft Tissue Therapist (qualified to Level 5)  
incorporating Sports and Remedial  
Massage, Sports Injury Assessment &  
advanced treatment techniques.  
Clinical & Maternity Reflexologist  
Complementary Therapist**

**Soft Tissue Therapists** work successfully alongside physiotherapists, chiropractors and osteopaths. A clinical therapy that uses massage techniques to manipulate the body's soft tissue. Used to assess and prevent injury, treat sports and non sport related injury, relieve muscle tension, swelling and pain. Using a variety of neuro-muscular techniques to provide an accurate, effective treatment.

**Reflexology** is very popular in the treatment of many conditions such as digestive disorders, arthritis, stress related illnesses and allergies to name but a few.

**Maternity reflexology** is a wonderful way of helping ladies cope with the aches and pains during pregnancy, after birth and during menopause. I also help couples with fertility issues.

**Thermo Auricular Therapy (ear candling)  
& Indian Head Massage** also available.

**GIFT VOUCHERS AVAILABLE**

Please contact Kathryn Dean ISRM, AOR for more details or to make an appointment.



# Escape at Bedtime

The lights from the parlour and kitchen shone  
out

Through the blinds and the windows and bars;  
And high overhead and all moving about,  
There were thousands of millions of stars.

There ne're were such thousands of leaves on a  
tree,

Nor people in church or the park,

As the clouds of the stars that look down upon  
me,

And that glittered and winked in the dark.

The Dog, and the Plough, and the Hunter, and  
all,

And the star of the sailor, and Mars,

These shone in the sky, and the pail by the wall  
Would be half full of water and stars.

They saw me at last, and they chased me with  
cries,

And they soon had me packed into bed;

But the glory kept shining and bright in my eyes,

And the stars going round in my head.



This poem by Robert Louis Stevenson, is included in his famous poetry book for children "A Child's Garden of Verse." We know Stevenson perhaps better for his novels and in particular, "Treasure Island".

He does seem to capture the feelings of being a child so well. 'Bedtime' from a child's perspective is such an unfair decision by adults! I remember the poem about the child incensed in summertime at

having to go to bed when it's not yet dark.

This poem I like very much because we can really feel the awe the child feels looking up at a starry winter's sky and, so much so, he can still see them in his mind's eye even when tucked up in bed. We too can still be this star-struck thankfully when we look up on a frosty clear winter's night!

Maggie Davies

---

## Kirton in Lindsey Amateur Gardeners Meetings & News

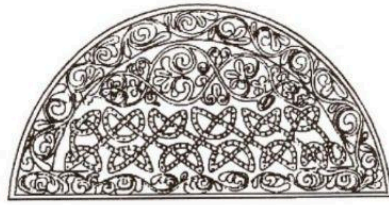
The KLAGs 2026 season of meetings starts on Wednesday 18th February at 7.30pm, in the Town Hall, Market Place, Kirton in Lindsey.

The new programme has yet to be finalised. There is always a rich and varied range of talks given, so please come along and join us.

At the AGM in November several new committee members came forward and a new Chair for the forthcoming year was elected. It is Jean Hall. Jean has been a member of the club for many years and has served on the committee before. The Vice Chair, Ben Britton, was re-elected to the position.

For more information visit us on Facebook at KLAGs (Kirton in Lindsey Amateur Gardeners) or for more details contact either Jean Hall (Chair) 01652 649360 Martin Hollingsworth (Publicity) on 01652 648435 or [m.hollingsworth205@btinternet.com](mailto:m.hollingsworth205@btinternet.com)





the kirton in lindsey society

## Can you dance a Minuet or a Cotillion!

### Mr Cleavin's Ball in December 201 years ago!



Think of those fancy dance scenes in films like *Pride and Prejudice*, but on a smaller scale, well transport yourself back to the 1810s and you could have taken part in such occasions in some of our local public houses that had function/concert rooms, such as the Red Lion (pictured) and the Black Swan.

Here is a poster for just such an event and ticket for the same dance, it wasn't just a

dance but also a dance display by the local young women from the area that went to Mr Cleavin's dancing classes, presumably as part of their preparations for becoming a 'lady'. It was held on the 2<sup>nd</sup> December 1814. The young ladies would be dancing Minuets, Reels and Figure Dances. They had wonderful names such as: The Almond, Strathspey and York Cotillion.

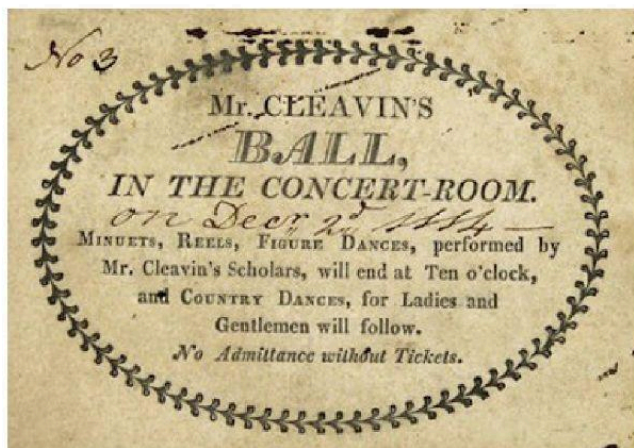
If you look carefully at the poster there was one young man, Master Ashford, taking part. Was he Mr Cleavin's

**Mr. H. Cleavin's Ball**  
IN THE CONCERT-ROOM,  
At Mr. Kingston's, the Red Lion Inn,  
IN KIRTON, IN LINDSEY,  
ON FRIDAY, DECEMBER THE SECOND, 1814.

1st MINUET. Master Ashford, Miss Copeman.	Second Part. DOUBLE MINUET. Miss Slater, Miss Little, Miss Peele, Miss Morley.
1st DOUBLE DANCE. Miss M. Bartle, Miss Whitehead.	3d DOUBLE DANCE. Miss Hargrave, Miss Fox.
THE ALMOND. Miss Slater, Miss Little, Miss Morley.	STRATHSPEY. Master Ashford, Miss M. A. Peele.
1st COTILLION.	2d Set, YORK COTILLION.
2d MINUET. Miss Fox, Miss Hargrave.	4th DOUBLE DANCE. Miss Slater, Miss Little.
REEL IN THREE.	REEL IN SIX.
STRATHSPEY. Miss Trafford, Miss Wright.	5th DOUBLE DANCE. Miss Bartle, Miss S. Hargrave.
2d DOUBLE DANCE. Miss Peele, Miss Morley.	2d ALMOND. Miss Peele, Miss Fox, Miss Whitehead.
3d MINUET. Miss Kingston, Miss S. Hargrave.	12th COTILLION.
REEL IN FOUR.	6th DOUBLE DANCE. Miss Copeman, Miss B. Copeman.
1st Set, YORK COTILLION and SCOTCH REEL.	FANCY DANCE. To conclude with Rule Britannia, the Downfall of Paris, and GOD SAVE THE KING!

N. B. To begin precisely at Six o'clock, and no admittance without Tickets, which may be had of Mr. CLEAVIN, at the Inn.

H. MOZLEY, PRINTER, GAINSBOROUGH.





assistant or trainee? Many of the surnames of the young ladies are recognisable as being from Kirton families (Fox, Trafford and Copeman) others would probably have been from neighbouring villages

The display dances would start at 6pm and finish at 10pm, with just one break – a long time. It would then be followed by Country Dances for Ladies and Gentlemen to take part in.

Could anyone do these dances today if one was held in the Town Hall?

Who was Mr Cleavin? Not too much is known about him, he called Henry and he was born in Caistor in 1787 and married a lady from Epworth called Sarah Robinson. We know that at the time of the above dance



1817 Clifton Assembly Room, by Rolinda Sharples (Brit Museum)

he was living in Messingham as earlier in the year the couple had a daughter that was baptised in the church there. On the entry in the register Henry gives his occupation as being a Dancing Master.

In 1841 he was still in the area as we have a press cutting about an evening's entertainment at the Black Swan, in the Market Place, where he performed and is recorded thus "Mr Cleavin's performance upon the violin was beautiful, and merited great applause". He moved to Hull shortly after this and died in 1844.

Do readers have any memories of country dances at their schools or in the Town Hall?

## January and February Meetings

TUESDAY 27 <sup>th</sup> JANUARY	<b>Middle Anglo-Saxon 'Productive' Sites -</b> Visiting again <b>Dr. Kevin Leahy</b> returns to his favourite period. Locations include Melton Ross, Riby and Butterwick.
TUESDAY 24 <sup>th</sup> FEBRUARY	<b>Tank Tour Two – Richard Pullen</b> will be continuing this story with newly discovered details and pictures about the Lincolnshire built WW1 tanks and the people involved.

Remember if you have any family stories, queries or ephemera that you would like help with or pass on to the Society please contact Martin Hollingsworth on

Tel. 01652 648435 or by e-mail [enquiries@kirtoninlindseysociety.org.uk](mailto:enquiries@kirtoninlindseysociety.org.uk)



## 2002 to 2005 the second period in Botswana.

In 2002, when both William and Oliver seemed well settled, and the last of our parents (Christine's father) had died, Peter happened to see an advertisement in ceramic review for a pottery teaching job at a Camphill community in Otse, Botswana. Similar communities exist in Britain and other countries making a social and working life for those with mental and physical disabilities. In the same way as in our previous pottery in Serowe, Botswana, the aim was that the income from the work done should pay for the training as far as possible.

The Camphill Community at Otse had a school for disabled children, and a section for the continuation of training for disabled teenagers. But our section was for working disabled adults and able bodied helpers. It included a well-established, high quality, furniture workshop. Hearing aids were assembled by deaf workers and there was a

flourishing plant nursery and small café.

A pottery had been started in the simplest way by a volunteer in an old chicken shed. We had just two students to begin with; David in a wheelchair and his able-bodied helper Joel. We were given money to buy some materials and started making coloured slipware as we had in England but with Botswana birds and motifs. One of Gaborone's shopping malls let us have a stall and we started selling there with limited success. There was a good sized electric kiln and a wheel, and



before long a new workshop was built for us near the garden and not far from the café. We found new workers both disabled and able bodied. We searched for clay in the dry river beds, and tried the fine soil from the big ant hills, but finished up as before having to mix in powdered clay from South Africa. We made animals and beads, as we had before, and one of the disabled

workers so showed a talent for sculpture. He was chosen as one of the young people in Botswana to study with sculptors from North Korea who had come to make bronze statues of the most famous Botswana chief. Sales were always a problem, but visitors did come to visit Camphill and a steady outlet was at the Camphill furniture makers shop in Gaborone.

The electric kiln took up most of the electricity available in our section of Camphill. So Peter built a catenary arch kiln to burn waste oil using two special burners from India and blowers to disperse the waste oil finely enough to burn.

We had a good time in Camp Hill which included days out on our donkey cart, visiting nearby Manyelalong, which means “cliffs white with the droppings of the nesting vultures”. We had holidays when members of our family and friends visited us in Botswana. This included trips to the Okavango Delta, to the grey green greasy Limpopo all set about with fever trees, a game reserve in South Africa, Victoria

Falls and the Zambezi. We left after two and a half years with regrets that we hadn't achieved more to make the pottery self-reliant and to see the new kiln fully predictable. Peter had over engineered the blowers and the draught from the high chimney so that the flame and draught through the kiln was really too fierce. The teaching was taken over by a Zimbabwean Potter, who, Peter was told, found outlets for the pottery with the Safari companies in the north of the country and a better local source of clay.





## Kirton Pottery Going Forward

From the time Peter and Christine returned from Botswana the second time the pottery continued to produce a variety of work and



completed many commissions. They made plaques for Caistor's Britain in Bloom and Kirton in Bloom every year as well commemorative plates and domestic ware. Peter won the Best Jug Prize at the Alford Ceramic Fair a few years ago. There were selling outings at the Ropewalk in

Barton on Humber, Alford Craft Market, and various shops in Yorkshire and Lincolnshire. There were regular classes on Mondays, Wednesdays and Fridays but then just Mondays and Wednesdays as Peter and Christine got older and, though still enthusiastic, less able to do so much.

The Pottery has a loyal customer base and has pupils who have been attending classes there since the 1980s! I am one such pupil and help with the selling at Craft Fairs as Peter can no longer drive. I am struck by the number of customers who tell me that they have pots from the late 70's and 80's and can't believe that Peter and Christine, and the Pottery here in Kirton Lindsey are "still going"!!

Over the years I have seen potters who have attended classes here go on to be potters with studios of their own. Lea Goldberg who lived in Kirton, came to the pottery and went on to Lincoln

where she had a shop on The Steep called "Octopussy". Another Lea came for a year or two and was encouraged to go on to do a degree at York. I remember Karen who moved to Norfolk to set up a pottery. While Peter and Christine were in Botswana two newly qualified potters furthered their experience and one of them, Louisa Taylor went on to do her Masters and now teaches in Brighton and has written many books on ceramics. Her first book referenced the original

gas kiln that Peter built in 1975 and included a photograph!

With all the goodwill and thinking of the

philosophy that Peter and Christine have embodied, we want to ensure the legacy of Kirton Pottery when Peter and Christine can no longer manage the pottery or are no longer here. The plan is to develop a

Kirton Pottery Community and this is already happening. We now have a banner to display at Pottery selling events saying "Kirton Pottery and Friends" and a Facebook Page. Peter has begun passing on his knowledge and skills to the potters who are keen to work in the pottery and we have the pottery open more so that the footfall is increased. Part of the shop will be available to our aspiring potters and artists, and those younger and more technically

minded are helping with publicity, and in particular, social media!

Kirton Pottery celebrated its 50th birthday in November this year and we hope

that it will go on encouraging artists for many years to come!

*Maggie Davies*

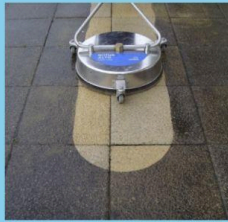




# POWERBLAST

Specialists in Drive, Roof & Gutter Cleaning

*Struggling with areas covered in Moss, Dirt and Grime? Gutters Overflowing? **Then we have the answer!***



**Our equipment brings up surfaces like new!**

Removes ingrained **Dirt, Algae, Moss, Lichen, Black Spots** & all winters **Grime!**

**Softwashing & low pressure** cleaning for delicate areas. **Repairs & Sealing** also available!

For a free quote call David ☎️ 01724 763673 📱 07717 307380

Family Run Business | Established 2001  
Based in Scotton

## Phil Stephenson

Painter and Decorator  
40 years' experience



10 Orchard Close  
Kirton in Lindsey  
Lincolnshire  
DN21 4TL

07710 799645

## Free Estimates

