

Kirton First!

Kirton In Lindsey Community Newsletter

Volume 23 Issue 1 January 2025

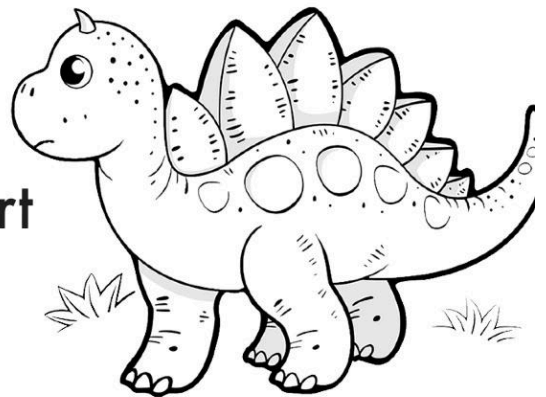
Don't let us go extinct!

**Kirton First has been hit
by massive cost increases.**

**Without extra financial support
we cannot survive for long.**

***Will you offer some help
this new year – however small?***

Will you even become a Kirton First Sponsor?



- ***Kirton First* has local news, events and stories in print, in a copy you can consult at any time.**
- ***Kirton First* goes to every home in the town and the surrounding area.**
- **We are the alternative to social media!**

CONTACT

Email - Aidan Morton kirtonfirst@gmail.com 078564 49268

Adverts - Sue Smith suetsmith12@yahoo.co.uk 0748540 1433

EDITORIAL TEAM

Jenny Cripps 0640281

Maggie Davies 648656

Sue Smith 0748540 1433

Aidan Morton 078564 49268

Pat Frankish 649365

DELIVERY TEAM - Please contact Jenny if you are likely to be away.

DATES FOR COPY AND MAGAZINE DISTRIBUTION

JAN COPY 22nd DEC

MAR COPY 21st FEB

MAY COPY 18th APR

JULY COPY 13th JUN

SEPT COPY 15th AUG

NOV COPY 17th OCT

DISTRUBUTION 2nd week January

DISTRUBUTION 2nd week March

DISTRUBUTION 1st week May

DISTRUBUTION 4th week July

DISTRUBUTION 4th week September

DISTRUBUTION 5th week November

Together we have voice - singly we have none.

The George

Market Place
Kirton-in-Lindsey
DN21 4LX

Tel: 01652 240270

Opening Hours

Monday - Thursday

4.30pm - (Food 8.30) 10.00pm

**Friday 4.00pm - (Food 8.30)
11.00pm**

**Saturday 12.00 pm (Food 8.30)
11.00pm**

Sunday

**10.30am - Last food orders
4.30pm**

**Saturday now open all day from
12.00 pm**

January

Offer 20% OFF

Offer is off the total bill

Includes drinks

Offer is for pre booked tables only

Minimum of 2 & Maximum of 8
dinner

Monday – Thursday 4.30pm – 5.30pm

Friday 4pm – 5pm

Saturday 3pm - 5pm

Any offers not to run in conjunction with any other offers

Happy New Year to you all. There is a lot to look forward to in 2025, so please read through everything that's on offer and get involved where you can. It's really good to see community events getting stronger, more people getting involved, and a real sense of community growing. I hope there's nobody out there who feels too lonely and cut-off. There's always somebody or something to get involved with.

It looks like there's an exciting story to look forward to in the next two issues! I leave it to you to find out what that's all about! You have to read the magazine to get the information. We're pleased to hear that most people do read the magazine, and although social media is used by lots of you, there's still many of you that like to have a magazine to hold on to and read. Local service adverts too!

We look forward to hearing from you throughout 2025. We wish you all a really happy New Year!

Residents interested in submitting an article for publication can email it through to a member of the editorial team for consideration, publication is not guaranteed as there are regular article updates and publication would be subject to spare capacity. Price details below are for commercial business

	Single	Yearly
Quarter page	£19.00	£82.80
Half page	£31.60	£167.75
Half page on cover	N/A	£189.75
Full page	£57.00	£318.75

Important Contacts

Doctors

Monday to Friday - Excluding public holidays 8:30am to 6:00pm
Emergency calls only 8:00am to 8:30am
6:00pm to 6:30pm

01652 648214 - Appointments and General Enquiries
01652 648529 - Repeat Prescriptions Ordering (48 hours Notice)
111 - Out of Hours Service

Chemist

G Payne - Chemist Opening Hours
Monday, Tuesday, Thursday, Friday 9:00am - 1:00pm & 2:00pm - 6:30pm
Wednesday 9:00am - 1:00pm & 4:30pm - 6:30pm
Saturday 9:00am - 1:00pm
01652 648244

Library

Monday - Closed Tuesday - 1:30pm to 6:00pm
Wednesday - 11:00am to 5:00pm Thursday - Closed
Friday - 9:30am to 3:30pm Saturday - 10:00am to 1:00pm

01652 648406

Council

Town Council (Clerk) 01652 648978
Public drop in sessions at the Town Council office Tuesdays and Thursdays between 12-4pm. The Clerk is available to meet at other times by appointment.

North Lincolnshire Council 01724 297000
Refuse collections
Friday Week 1 Brown and Burgundy Bins
Friday Week 2 Grey/Green Bin and Boxes
Waste Disposal Site
Redbourne Mere (NB you may be asked for identification)
Open Friday, Saturday, Sunday, Monday, and Tuesday
Summer (1st March to 31 October) 10:00am to 6:00pm
Winter (1st November to 28th February) 10:00am to 4:00pm

Travel

Bus services from Kirton to Lincoln & Scunthorpe - Details are available at stops or by phoning "Traveline" on 08706 082608

Church

ST ANDREW'S UNITED CHURCH

Rev Dr Michael Sheard 01652 648846
 Church Halls -enquiries- Heather Bunker 01652 648573
 General Enquiries Jane Sheard 01652 648846
 Website: www.standrewsunitedchurch.org.uk

ST RADEGUNDS CHURCH, GRAYINGHAM

Services: 9am every Sunday
 Website: www.achurchnearyou.com/grayingham-st-radegund
 Facebook: www.facebook.com/radegundgrayingham

ROMAN CATHOLIC WORSHIP ST MARY'S BRIGG

Parish Priest: Father Limnyuy Gamsi 01652 652221
 Kirton contact: Jean McFarlane 01652 648114
 Website: www.bartonandbriggcatholicchurches.org

Miscellaneous

Appletree Day Nursery	01652 649185
Archery Club	secretary.klac@gmail.com
Art Club	01652 648069
Brownies & Guides	01652 648800
DENTIST (Dr Bagga)	01652 640291
Happy Days Nursery	01652 648228
Huntcliff Academy	01652 64276
Jellitots Rachel	Rachel.colin@hotmail.co.uk
Kirton In Lindsey In Bloom	tanya.KLIB@outlook.com
Kirton Lindsey JFC	info@kljfc.com
Kirton Primary School	01652 648792
KLASSIC Venue Manager	07936 936961
Mini Bloomers	mini_bloomers@outlook.com
Outer School Limited	6487788
POLICE (Non emergency)	101
POST OFFICE	01652 648234
Scouts Group	daniel.crawshaw@northlincsscouts.org.uk
Scunthorpe Hospital	01724 282282
Table Tennis	07803 459464
Town Hall	07752 246255
Traveline (Buses)	0870 6082608
Vetinary Surgeon	01427 612662

Coming up in Kirton First March edition!

A Journey to Antarctica

Andy, who lives in Kirton, saw a job advertised that ticked several boxes that could make his dreams become a reality. But this job wasn't just a few miles away it was at the opposite end of the earth....and he had a wife! But as you will see she encouraged him, and so began his exciting year! He has written down an account of his adventure and it is such a good story that we are going to publish it in two parts. The first half in March and the second half in the May edition. It may inspire more of us to grasp the nettle and follow our dreams!



Welcome 2025

Have you already planned this year's gardening program? Perhaps you have decided on a total transformation? Join our Facebook group and let us know what you're planning we love to see what our community are experimenting with. 'Kirton in Lindsey in Bloom'

Good News

We would like to thank all the volunteers for their efforts for coming out and supporting the litter picking sessions when the weather has permitted. Thanks also go to those of you who go out alone and contribute on a regular basis. Our town could not be kept so neat and clean without all your efforts.

Have you noticed how neat and clean places are looking from the efforts of volunteers with the weeding and maintenance? Huge thanks go to those who help and support with this, it is not an easy task, but it is very much appreciated.

Welcome to George, a regular volunteer for Bloom. No doubt you have seen George out litter picking and weeding. Not that long ago George did not know Bloom existed and now George is a vital volunteer, and we would like to say thank you George for joining in, your hard work is helping to keep our Bloom group going.

Competitions

Now is the time to be thinking about entering our annual garden competitions. We have, over the years at different times, previously had opportunities for the best front garden, best back garden, best hanging baskets, best wildlife friendly garden, best all year-round garden. Whilst this year's categories are yet to be decided its never too early to get a head start and get planning. If there is a want for a specific category that's popular, please do get in touch so we can consider the options for it.

If you are interested in helping with the competition preparations, please do get in touch.

Please keep an eye out in the next addition of the Kirton First for an entry form or contact Tanya on 07858769934 or tanya.KLIB@outlook.com later in the year.

Sponsorship

We have new Sponsorship packages available and numerous locations to take advantage of. If you are interested in Sponsoring Kirton in Lindsey in Bloom, please contact Tanya on tanya.KLIB@outlook.com or 07858769934 to find out more. Donations are also greatly received.

Request from your Bloom group

Volunteers and friends are always wanted and needed to join our very small, welcoming group of like-minded locals. If you are at a loose end from time to time perhaps you could join us for a chat, get to know likeminded people in your community while sharing the load and improving the overall look of our Town. There is no specific commitment required and there is something for everyone. You can sign up to our email updates so you never miss anything, or you can join our Facebook group - Kirton in Lindsey in Bloom. If you prefer you can contact Tanya on the telephone number above. There is absolutely no expectation for how much you participate, we only want you to do what you can, when you can and most of all have fun with us while doing it.

Britain in Bloom - East Midlands in Bloom 2025

With the theme for 2025 yet to be announced we are excited about the coming year.

Could you be the next rising star in Kirton in Lindsey in Bloom to represent our Town at the regional competition?

Now is the time to get involved and we would love to improve further on this year's points, but we do need more help to achieve this. It would be a fantastic achievement if we could gain those missing points and achieve the Silver Gilt award. We would love for more people to get involved and encourage friends and family to come together.



PC DOCTOR

Computer problems solved
in your own home

Virus and Spyware Removal

Broadband and Wireless

PC Cleanup

Hardware Repair

Networking, Data Recovery

Laptop Repairs (screens etc)

Established in 2000

Reliable Long Running Business

Now Based in Kirton Lindsey.

07961572153



TIGHE GROUP OF COMPANIES

**SHOT BLASTING & SPECIALISED
COATINGS, DOMESTIC, MARINE &
INDUSTRIAL PAINTING CONTRACTORS**

**Jack Tighe Ltd & Jack Tighe Decorating Ltd
Redbourne Mere, Kirton Lindsey
Tel: 01652 640003 Fax: 01652 648159**

Shop Applied Specialised Coatings:

**Scunthorpe Works
Tel: 01724 861879 Fax: 01724 280005**

**Doncaster Works
Tel: 01302 880360 Fax: 01302 880370**

**www.jacktighe.com
sales@jacktighe.com**

R & A Accountancy Services (Lincs) Ltd

Small & Friendly with 30 years + experience

We specialise in providing a personalised accounting and taxation service for sole traders, partnerships, sub-contractors, CIS tax refunds and individuals.

We can tailor our service to offer:-

- ☆ Year End Accounts
- ☆ Self Assessment Tax Returns
- ☆ VAT Returns
- ☆ And much more...

Call us today - Your initial consultation is free!!

Telephone: 07932 089256

Email: richard@ra-lincs.co.uk

burton & dyson
SOLICITORS

Your local legal specialists

Burton & Dyson have been providing legal advice to individuals and businesses in Lincolnshire for more than 150 years.

No two clients are the same, which is why our services are individually tailored to meet your exact needs.

We pride ourselves on building strong and enduring relationships with our clients and look forward to being able to assist you, whatever your requirements.

Our specialist services include:

- Business & Employment
- Commercial property
- Moving home
- Estates & Probate
- Wills & Trusts
- Powers of Attorney
- Family & Child Care
- Fixed Fee Divorces
- Notary Public

You can get in touch with us in any of the following ways;

Call 01427 610761 | Email info@burtondyson.com | Visit 22 Market Place, Gainsborough

www.burtondyson.com

22 Market Place • Gainsborough • Lincolnshire • DN21 2BZ
01427 610761 • info@burtondyson.com



Kirton in Lindsey Town Council - January 2025 update

Billy Boyd

Former Town Mayor and Councillor and great friend of the town, Billy Boyd, passed away peacefully at home on Sunday 15th December. Billy had been battling cancer for six years and still continued to serve his community throughout this time. Billy had served as a Town Councillor for 17 years, joining Kirton in Lindsey Town Council in June 2007. In 2009 he was elected Mayor and served in that role until 2013. As an ex-Veteran and Mayor he presented the Keys to the Town to No 1 Air Control Centre (1ACC). He will be sadly missed by Melanie and his family and by all his co-workers and friends. Heartfelt condolences to all.

Christmas Festival and Lights Switch On 2024

The Christmas Festival and Lights Switch On, was held on Sunday 24th November, thank you to everyone who came along and we hope you enjoyed the event. Feedback is always welcomed to help us continue to improve the annual event. Thanks go to Glanford & Lindsey Lions, the small army of volunteers who helped as well as the Brick Hut who stepped in to help outdoor stall holders battling the weather! We continue to encourage everyone to support local businesses.

Best Kept Town Centre Frontage Competition – Winners!

Commercial and residential buildings in the town centre were again automatically entered in the Best Kept Town Centre Frontage competition at the beginning of November. The results were:
Businesses – Winners – Kirton Pottery with No. 12 Chocolatier Highly Commended. Residential winners were 1 Sylvester Street with 2a George Street Highly Commended. Well done to everyone who keeps our town centre looking its best!

SportsZone & / Box-It Sessions update

The **FREE** activities for primary and secondary aged children taking place on the Green each Monday will return again in spring, with the support of Wright Way Sports. Also, Positive Activities will be building on the success of the **FREE Box-It sessions** at the Diamond Jubilee Town Hall, so look out for more information about these events coming soon online and in the town noticeboards.

Winter Window Wonderland – Winners!

Thank you to those who entered this years town Christmas competition with their decorated windows. Prizes were presented for the best three entries by the Town Mayor, Cllr Hazel Fox. Well done to Kirton Lindsey Primary School, 1 West Cross Street and 46 Windmill Way and thanks go to Cllr Kathy Cooper, Cllr Pat Frankish, Cllr Suzanne Stephenson and No. 12 Chocolatier for their generous donations of the prizes.

FREE Electric Blanket Testing

North Lincolnshire Council is offering free electric blanket testing and are looking to provide a session at Kirton in Lindsey. This is planned to be held at the Community Café, at the Church Halls, St Andrew's Street on a Thursday afternoon so look out for more information on posters & online soon.

Dog Fouling problems

The Town Council is aware of increasing problems of dog fouling by a minority within the town and enforcement by dog wardens are possible, but only if people are reporting instances through to North Lincolnshire Council. Without reports directly to them, it is unlikely that they will have the evidence they need to assign a dog warden. So please always report it when you see it.



Civic Dinner 2025

The Mayor of Kirton in Lindsey, Cllr Hazel Fox, will hold her Civic Dinner on Saturday 1st March, networking, promoting the town and raising money for her chosen charity, Macmillan Cancer Support. The annual Civic Award will also be presented at the event, thank you to those who put forward nominations. For more information, please contact the Assistant Clerk via the Town Council office.

Using a salt bin or notice one that's running low?

Salt bins are provided, stocked and refilled by North Lincolnshire Council. Don't leave a salt bin running low as you never know when you or someone else might need to use it.

If a salt bin is in need of refilling, contact North Lincolnshire Council with the exact location on Tel: 01724 297000 or online via their website. Let's work together to keep Kirton in Lindsey safe and moving through the winter.

Warm Spaces

In November the Town Council launched a warm spaces scheme for the community and these continue throughout the winter. The current confirmed spaces for everyone are:

Tuesday: 1:30pm to 6pm - **Library**, King Edward Street

Wednesday: 11am to 5pm - **Library**, King Edward Street

Thursday: 1.30pm-4.30pm – **Community Café, Church Halls**, St Andrews Street

Friday: 9:30am to 3:30pm - **Library**, King Edward Street

Saturday: 10am to 1pm - **Library**, King Edward Street

Any changes, additions or other updates will be shared locally online and in noticeboards.

Website for Kirton in Lindsey - www.kirtoninlindsey.com

Don't forget that the website for Kirton in Lindsey – about the groups, organisations and community activities which go on is available as the first point of contact for anyone wanting to know what goes on in the town. We hope that you will discover new activities and groups that you would like to be a part of. There is also information about community events, transport and local policing. If you run or host a community activity or group that takes place in Kirton in Lindsey, please email community@kirtoninlindseytowncouncil.gov.uk to become involved. Go to www.kirtoninlindsey.com for all the info! *This project is funded 79% by the UK Shared Prosperity Fund and 21% Kirton in Lindsey Town Council.*

Ings Road Planning Application Update

The proposed design layout for 74 houses on Ings Road was refused by North Lincolnshire Council Planning Committee at their meeting in December. This is the latest in a long process with the initial outline planning application also refused by the Planning Committee but allowed on appeal in 2021. We wait to see what happens next with the proposals.

Councillor Vacancy – Election to be held Thursday 13th February

Following the resignation of Cllr Boyd in November, there is currently a vacancy for a Town Councillor, please get in touch for more information about the role and how to get involved. The vacancy will be filled by an election, as requested by at least ten residents, and this will be held on Thursday 13th February so look out for details online and in noticeboards for more information.

Stay informed!

Keep in touch about the work of the Town Council on our website and Facebook page – just search for 'Kirton in Lindsey Town Council'. Information about meetings, decisions and our activities is always available to you.



Castle

**Building & Garden
Maintenance**

All Types of Work Undertaken

**Brickwork, Roofing, Joinery
Decorating, Plastering
and
Garden Work**

All Jobs Considered



**Call Andy on
07852 190091 or
01673 818543**

NIGEL ALLEN PLUMBERS LTD

**SERVICE, REPAIR AND
INSTALLATION OF GAS
APPLIANCES**

POWER FLUSHING

HEATING INSTALLATIONS AND UPGRADES

LANDLORD GAS SAFETY CHECKS

TEL: 07850 559801

EMAIL: nigel_allen123@hotmail.co.uk

Gas safe no is 301921





Funeral Director N.A.F.D

F. S. Machin

*24 HOUR PERSONAL SERVICE
PRIVATE CHAPEL OF REST*

*A Family Business Serving Kirton in
Lindsey and the
Surrounding Area for over 60 years*

*GOLDEN CHARTER PRE-PAID
FUNERAL PLANS AVAILABLE*

*5 March Street, Kirton in Lindsey
01652 632205*

WELLFIT



ESTD 2020

STUDIO
KIRTON IN LINDSEY

JANUARY BUNDLE

Book your private session bundle now and save !!

5 Sessions for £185

10 sessions for £350

Terms and conditions apply

Contact Becks via WhatsApp on 07562 291 283
or email wellfitstudiokl@gmail.com

**JANUARY
SPECIAL
OFFER**



Kirton in Lindsey Town Councillors 2024-2025

Cllr Hazel Fox – Mayor 2024-2025

Farringford, 18 Spa Hill, DN21 4BA

Telephone: 07966 787044

E-mail: kirtoncllrfox@outlook.com

Cllr Joy Kofoed – Deputy Mayor 2024-2025

Lowfield Close, Kirton in Lindsey

Contact via the Town Clerk only

Cllr Kathy Cooper

14 Southdale Close, DN21 4BS

Telephone: 01652 648123 (home)

07826 155237 (mobile)

E-mail: kathleen.cooper3@btinternet.com

Cllr Adam Delsignore

Telephone: 07484 680471

E-mail: adamdelsignore@gmail.com

Cllr Pat Frankish

1 North Cliff Road, DN21 4NJ

Telephone: 01652 649365 (home)

07836 528310 (mobile)

E-mail: pat.frankish@btinternet.com

Cllr David Garritt

Beckingham House, 27 Ings Road,
DN21 4BU

Telephone: 07824 889616 (business
mobile)

E-mail: dsgarritt@gmail.com

Cllr Karen Gunn

Telephone: 01652 648363

E-mail:
karenlmetheringham@googlemail.com

Other contact via the Town Clerk only

Cllr Suzanne Stephenson

3 Whitehoe Farm, Gainsborough Road,
DN21 4EN

E-mail: sstephenson074@gmail.com

Other contact via the Town Clerk only

There is currently **a vacancy** for a Town Councillor – **this will be filled via an election, as requested by at least ten residents in December**, and will be held on 13th February 2025. Further details about the election will be made available shortly online and in noticeboards.

All Councillors are contactable via the Town Clerk

The Town Council rent office space within the Diamond Jubilee Town Hall:

Town Council Office, Diamond Jubilee Town Hall, High Street, Kirton in Lindsey, DN21 4LZ

Public opening hours Tues & Thurs 12 noon to 4pm,

Clerk is available at other times by prior appointment.

Telephone: 01652 648978 / 07518 284173

E-mail: enquiries@kirtoninlindseytowncouncil.gov.uk

Find us on Facebook: "Kirton in Lindsey Town Council"

Website: www.kirtoninlindseytowncouncil.gov.uk

Kirton in Lindsey Town Council by-election – 13th February 2025

**An election has been called to fill a vacancy on Kirton in Lindsey Town Council
The election will take place on 13th February 2025 – look out for more details soon.**

To stand as a candidate at this Town Council election:

Anyone aged 18 or over can stand for election if they meet certain qualification criteria. The first is that you are a British citizen or a citizen of either an eligible commonwealth nation or the European Union.

The second qualification criteria is your connection to Kirton in Lindsey; there are four different criteria you could meet and **you only need to meet one of them** to be able to stand:

- i) be registered as a local government elector within the Parish of Kirton in Lindsey; **or**
- ii) have occupied as owner or tenant any land or other premises during the whole of the previous 12 months within the Parish of Kirton in Lindsey; **or**
- iii) their principal or only place of work during the whole of the previous 12 months has been within the Parish of Kirton in Lindsey; **or**
- iv) have resided in the Parish of Kirton in Lindsey for the whole of the previous 12 months or within 3 miles of it.

You are disqualified from being a Town Councillor if any of the following apply: you are an employee/paid officer of Kirton in Lindsey Town Council, you are subject a bankruptcy restrictions order/interim order, you have been sentenced (inc. suspended sentences) to a term of imprisonment of three months or more within the five years prior to polling day or you have been disqualified under the Representation of the People Act 1983 e.g. for corrupt or illegal electoral practices.

Detailed guidance on qualification and disqualification can be found on the Electoral Commission website.

Information for Voters

Voters do not require a polling card to vote and can vote at their usual polling station by attending and giving their name and address to the staff at the polling station.

Voters must take photo ID when voting at the polling station.

If you live in Kirton in Lindsey, go to your usual polling station at either:

the Church Halls on St Andrew's Street

or the Library/Youth Centre on King Edward Street to vote.

The By-Election to elect a Town Councillor to Kirton in Lindsey Town Council will take place only if more than one valid nomination is received before the deadline.

No Poll will take place if only one valid nomination is received,
as that candidate will be automatically elected.

Further information about the election can be found on the Kirton in Lindsey Town Council and North Lincolnshire Council websites as well as by contacting the Town Council Office at the Town Hall.

Winter Trees

BY WILLIAM CARLOS WILLIAMS

All the complicated details
of the attiring and
the disattiring are completed!
A liquid moon
moves gently among
the long branches.
Thus having prepared their buds
against a sure winter
the wise trees
stand sleeping in the cold.



“Winter Trees” by William Carlos Williams

The only other poem that I know by this well-known American poet is one about someone eating plums from “the icebox”, which were obviously meant for someone else, and he finishes with “Forgive me/ they were delicious/ so sweet/ and so cold.” This poem is also very short, and to the point. It seems to point out the always astonishing thing about Winter Trees.... They put on such a wonderful display each Spring and Summer, and give us another magnificent show in the Autumn, only to get undressed again! But as we see when we walk around our gardens, we can already see the buds holding tight through wind, frost and snow ready to burst open again.

Maggie D

Am I Just a Grumpy Old Woman?

I know someone who lives in Scotland, whose partner is a young woman with a serious health problem and uses a wheelchair. They have faced real difficulty getting around Glasgow, where they live, because of inconsiderate drivers blocking the available dropped kerbs. They have had stickers made to stick on car windscreens to point out that it is rude and actually illegal!

I know, I hear you say, "This is Kirton, not Glasgow"! However, it happens here every day.

The most glaring example of this daily blocking is of the large, dropped kerb outside the top Co-op. It is difficult to point this out to drivers without sounding preachy!

Sometimes I have talked about it to other shoppers, and many have said they were pleased to have it pointed out. Some have told me of getting a fine for parking by the dropped kerb near the Indian restaurant. (£70!) and yet others have told me in no uncertain terms to "get lost"! I saw someone I know who uses a walker wandering to and fro outside the Co-op looking for somewhere to cross because a large car was blocking the place designed for wheelchairs, pushchairs and walkers.

Have any readers any ideas to encourage drivers to think more before parking besides dropped kerbs? We are all in a hurry, and just "popping" but let's just think of the difficulty we cause others who already have enough to manage!

G.O.W.?





AMARA CARE

Supporting Meaningful Lives...

Amara Care is a Domiciliary Care Agency located in North Lincolnshire and Lincolnshire registered with the Care Quality Commission.

We provide services for:

- Adults with physical disabilities
- Adults with sensory loss including dual sensory impairment
- Adults with mental health issues
- Adults with learning disabilities
- Children and their families
- Dementia
- Older adults

We take referrals from:

- Individuals
- Social Services
- Health Services
- Direct Payments
- Individual Budgets
- Independent Living Fund
- Private arrangements

Support Services Available:

- Up to 24 hour support packages
- Personal care
- Medication care / support to attend medical / GP appointments
- Help with household tasks
- Support getting in and out of bed
- Shopping
- Preparing meals
- Trips out and keeping active
- Tenancy support

**Looking for a Career
in Support Work?**

Please contact us for
our current vacancies!

If you are looking to arrange support for yourself or someone you know, or if you would like further information on any of the services we have to offer, please contact us on:

Tel: 01652 648335

Email: admin@amaracare.co.uk

Artemis House, 25 High Street, Kirton in Lindsey, DN21 4LX



Pat Frankish Psychology & Psychotherapy Consultancy

Promoting Independent Living

Pat Frankish Psychology & Psychotherapy Consultancy

are a team of HPC registered Psychologists and Psychotherapists working together in a private centre to provide psychological therapies for people with a range of psychological difficulties.

We are recognised by medical health insurance companies and social care providers for individuals with mental health needs, learning disabilities and/or acquired brain injuries.

Our range of services are as follows:

Mental Health issues
Including severe and enduring difficulties
Anxiety
Depression
Post-traumatic stress disorder
Acquired brain injury
Individuals who have experienced abuse or trauma
Personality issues
Attachment difficulties
Relationship issues
Learning disability
Child & family

We specialise in

Psychological interventions such as Counselling and Psychotherapy, Cognitive behavioural therapy (CBT), Psychodynamic Psychotherapy, Disability Psychotherapy.

We offer a safe, confidential and easily accessible service provided by highly experienced clinicians offering a choice of approach and therapist to suit individual needs.

If you feel we can help, you can contact us confidentially during office hours of Monday – Friday 9am - 5pm. See our contact details below.

Artemis House
25 High Street Kirton Lindsey DN21 4LX
Telephone 01652 648335 or Fax 01652 648235
Email admin@patfrankish.co.uk www.patfrankish.co.uk

DRY AMD?

(AGE-RELATED MACULAR DEGENERATION)

TREATMENT AVAILABLE NOW!

**Hospital Grade Advanced
OCT Eye Exams**

by Dr Janjua

**Specialist Lenses
For Various
Eye Conditions**

**Widest Variety
of Frames
in Brigg**

**O'BRIEN'S
OPTICIAN
ESTD.1979**

enquiries@obriensopticians.co.uk

www.obriensopticians.co.uk

43/44 Wrawby Street,

Brigg,

North Lincolnshire DN20 8BS

01652 653 595

01652 649 024



CLEATHAM HALL NEWS

Winter Warmer Offer

Our Winter Warmer Dinner, Bed & Breakfast is now live!
This offer includes a stay in one of our Super King Suites with a 3 Course Dinner and Breakfast from £229.00 per couple.
A wonderful warm and elegant stay awaits you at Cleatham Hall.
What better way to treat yourself or give as a gift. The offer runs until the end of March 2025

Scan the QR code
to find all of our menus & book a table in
our Orangery Restaurant!



Upcoming Events

Sunday Lunch

Our ever popular Sunday Lunch service will continue throughout the holidays. Give our team a call or send us an email and book now! 01652 649402 enquiry@cleathamhall.com

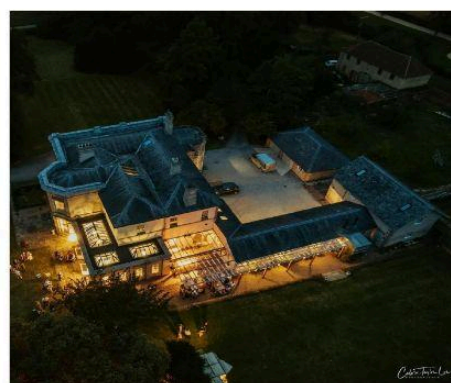
Exclusive Celebrations

At Cleatham Hall we specialise in exclusive celebrations in warm and welcoming surroundings. If you are looking for somewhere to celebrate an engagement, gender reveal or just want to have friends and loved ones all together to celebrate any milestone, we can offer you the best North Lincolnshire has to offer in hospitality. We are looking forward to hearing from you!

Restaurant Opening Times:

Wed - Sat: 12pm - 8:30pm

Sunday Lunch
12pm - 4pm



The Independent Brigg Line Rail Group



Valid from 14 December 2024 until 17 May 2025

Take a trip to Brigg, on the unique Monday to Friday train service



Train Times - Monday to Friday only

From Sheffield to Brigg and Cleethorpes

Sheffield	d	0937	0954
Darnall	d	0943	
Woodhouse	d	0949	
Kiveton Bridge	d	0956	
Kiveton Park	d	0959	
Shireoaks	d	1005	▼
Worksop	d	1010	1018
Retford platform 4	d	1020	1028
Gainsborough Central	d	-	1045
Kirton-in-Lindsey	d	-	1057
Brigg	a	-	1108
Barnetby	a	-	1114
Habrough	a	-	▼
Grimsby Town	a	-	1133
Cleethorpes	a	-	1144

From Cleethorpes to Brigg and Sheffield

Cleethorpes	d	1320	-
Grimsby Town	d	1327	-
Habrough	d	▼	-
Barnetby	d	1343	-
Brigg	d	1349	-
Kirton-in-Lindsey	a	1359	-
Gainsborough Central	a	1418	-
Retford platform 3	a	1433	1450
Worksop	a	1446	1502
Shireoaks	a		1507
Kiveton Park	a		1512
Kiveton Bridge	a		1516
Woodhouse	a		1523
Darnall	a	▼	1530
Sheffield	a	1512	1543

All services are operated by Northern. Check before you travel as engineering work could affect your journey

nationalrail.co.uk

03457 48 49 50

Visit Brigg by train online guide

Find out more about the market town of Brigg at tinyurl.com/briggtrainguide



Kirton in Lindsey Amateur Gardeners Meetings & News



The KLAGs 2025 season of meetings starts on Wednesday 19th February, with a new Chair, Tracy Hughes, in office and she is looking forward to seeing members new and old at 7.30pm, in the Town Hall, Market Place, Kirton in Lindsey.

The speaker for the meeting as yet to be arranged. See posters and our Facebook page for more details/

13th Daffodil Show

The Daffodil Show makes a welcome return, this year's show will be on Saturday 5th April 2025 (9.30 to 12.30 in the Town Hall). More details next issue. It will again coincide with the monthly 'Cup cakes and Coffee' morning run by St Andrew's United Church.



Two more advance dates for your diaries: morning of Saturday 10th May is the yearly Plant Stall (date subject to change) and Annual Show on Saturday 6th September.

Please come along and join us we are a friendly bunch.

Follow us on Facebook at KLAGs (Kirton in Lindsey Amateur Gardeners) or for more details contact either Tracy Hughes (Chair) 07831 179974 Sarah Wilkinson (Secretary) sarah.wilkinson11@outlook.com. or 01652 409717



the kirton in lindsey society

Happy New Year to all readers from The Kirton in Lindsey Society and me personally.

Here is the 'normal' language versions of the two Mabel Peacock dialect poems that were in the last issue.

Will we get any more snow this winter? Here's a wintery scene from times gone by. It is of the yard and outbuildings of Belle Vue House on Queen Street, the house is no longer there. It was the home of Dr C F George for many years up to his death in 1923, he would have taken the photograph, as many readers will know, he was an excellent amateur photographer.

*Question: Four and twenty white beasts
Standing in a stall.*

*Four and twenty white beasts
And red one licks them all?*

Answer: The teeth and the tongue.

*Question: Under water, over water,
And never touches water—
What's that?*

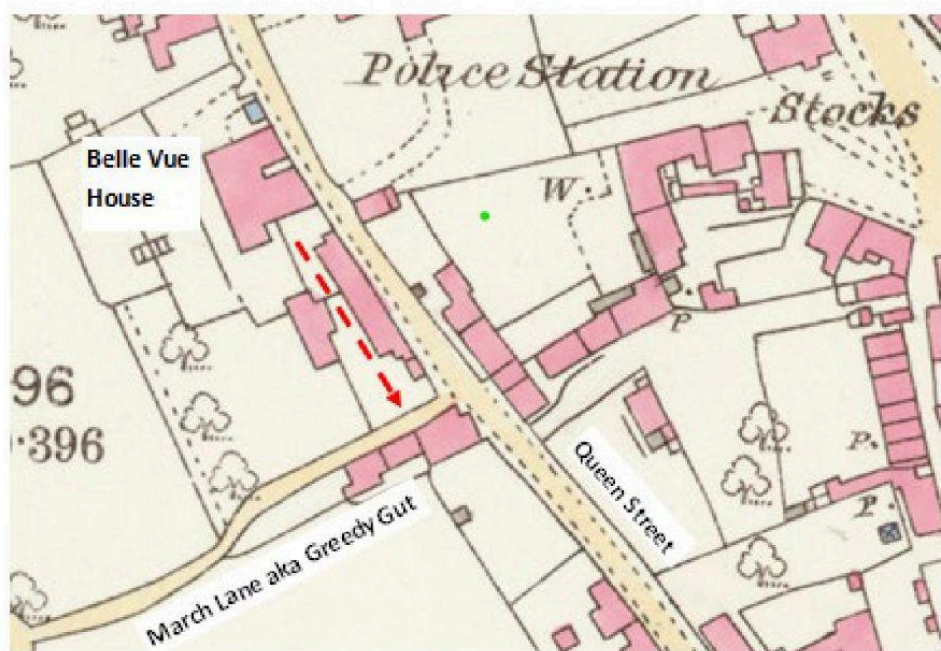
*Answer: Why, a lass going over a bridge
With a pail of water on her
head.*



The young woman will be one of the 'live in' servants that worked at the house at the time. Either Annie B. Keyworth, Henrietta Stephenson or Eliza Yealand. Do we have any descendants or relatives of these young ladies still in the town?

In the background of the picture are houses that are still there now at the Queen Street end of March Lane (aka Greedy Gut) see dotted arrow on the plan.

Did you notice the fancy pigeon loft entry in the gable end of the out-building? So, will they be having a Pigeon Pie on the menu during the winter?



If you can help or have any queries please contact Martin Hollingsworth on Tel. 01652 648435 or by e-mail enquiries@kirtoninlindseysociety.org.uk

Remember if you have any family stories, queries or ephemera that you would like help with or pass on to the Society please contact us.

Forthcoming meetings of the Society:

TUESDAY 28 th JANUARY	50 years of Lincolnshire Archaeology Perennial favourite Dr Kevin Leahy takes a look back at half a century of digging holes in the ground!
TUESDAY 25 th FEBRUARY	“Packhorse Days and Packhorse Ways” - an illustrated talk by Janet Niepokojszycka describes her trips for charity with a horse and authentic pack-saddle and panniers over many miles.
TUESDAY 25 th MARCH	New Images of the Universe - astronomer and author Paul Money is back to share more fantastic celestial pictures and images of outer space.

Please come and join us we are a friendly and sociable group.



Garage Services

Looking for great value car servicing? Need a reliable MOT test centre?

Servicing, air conditioning, tyres (supply & fit), 4-wheel laser alignment, diagnostics, cambelt replacement, timing chain replacement and MOT.

Ready to book in for a service or MOT? Then call now on 01652 648429 or come to see us at GG Steel Ltd, Station Road, Kirton Lindsey, DN21 4BD.

Also you can book online at <https://www.ggsteel.co.uk/mot-service>

Independent suppliers of LPG cylinders and accessories for home, farm, business and industry.	
Competitive prices, no bottle deposit, excellent service.	
Call Jason on 07747 471750 or email: midlincsfuels@gmail.com North Cliff Farm, North Cliff Road, Kirton Lindsey	FREE and prompt local delivery of LPG



KATHRYN DEAN THERAPIES
SPORTS & REMEDIAL

Soft Tissue Therapist (qualified to Level 5)
incorporating Sports and Remedial
Massage, Sports Injury Assessment &
advanced treatment techniques.
Clinical & Maternity Reflexologist
Complementary Therapist

**KATHRYN DEAN
SPORTS & REMEDIAL
THERAPIES**

North Cliff Farm
North Cliff Road
Kirton Lindsey
Lincolnshire

Tel: 07747 471752
Email:
kathryndean18@gmail.com
New website coming soon!





Soft Tissue Therapists work successfully alongside physiotherapists, chiropractors and osteopaths. A clinical therapy that uses massage techniques to manipulate the body's soft tissue. Used to assess and prevent injury, treat sports and non sport related injury, relieve muscle tension, swelling and pain. Using a variety of neuro-muscular techniques to provide an accurate, effective treatment.

Reflexology is very popular in the treatment of many conditions such as digestive disorders, arthritis, stress related illnesses and allergies to name but a few.

Maternity reflexology is a wonderful way of helping ladies cope with the aches and pains during pregnancy, after birth and during menopause. I also help couples with fertility issues.

Thermo Auricular Therapy (ear candling)
& **Indian Head Massage** also available.

GIFT VOUCHERS AVAILABLE

Please contact Kathryn Dean ISRM, AOR for more details or to make an appointment.



McLoughlin

Piano Tuning

CGLI FSB MPTA

07876 661475

07964 368186

01724 336179

www.mcloughlinpianotuning.co.uk



ACE

CHIMNEY SWEEPS

Find us on Facebook
www.facebook.com/acechimneys

07594 353385

- Chimney Sweeping • Bird Guards & Cows
- Chimney Repairs • Stove Servicing & Parts
- Nest Removal • Tar & Creosote Removal

LARKRISE COTTAGE & CAMP SITE



Relatives visiting?
Do they need a
spacious fully equipped
home from home?

Also a seasonal camp site
is available

We are just 1 mile from Kirton Lindsey
Telephone John on **0773-092-7710** or
take a look at our website on
www.larkriseholidays.co.uk

Rates negotiable



Creating confident, independent
children through
a journey in music and dance



Please get in touch to see how we
can help your Dinky Dancer start
their journey now

Contact us now at:
www.musicanddancejourney.com
dance@musicanddancejourney.com
Tel: 01652 648563

Amanda's Home Hairdressing

In the comfort of your own home
All aspects of hairdressing

15 years salon experience
Reasonable price range

***BARBICIDE Covid19 certified for
safe working practices***



Phone: 01652 648940
Evenings only

AngelaPowell
The Lettings Specialists

Calling All
LANDLORDS

Our team has a wealth of local knowledge, coupled with experience and commitment to offering a friendly, professional service to all clients.

Contact us for a no obligation valuation and assessment of your property including advice on potential rental income.

Zoopla



rightmove

01652 654269 f t i y
www.angelapowell.co.uk

Do You Need a Builder?

Any Job – Large or Small

All work guaranteed

Driveways, Garages, Alterations.

Extensions, New Builds, Joinery,

Renovations, Stonework



For a Friendly Service Est. 1990

Call **DEAN** on **07885782507** or

Email: **fieldingdean9@gmail.com**

Phil Stephenson

Painter and Decorator
40 years' experience



10 Orchard Close
Kirton in Lindsey
Lincolnshire
DN21 4TL

07710 799645

Free Estimates



Corner Cottage Animal Boarding is a high quality, family-run business committed to ensuring your pet receives the highest standards of care.

Our spacious, heated kennels are hygienic, comfortable and cosy to cater for all the different breeds and characters of your dogs.

At the Corner Cottage Grooming Salon we are focused on providing high quality pet (dogs, cats and small animals) grooming and complete customer satisfaction.

Our superb purpose built cat accommodation consists of high quality reinforced high density polyethylene. This offers a superior finish to ensure the highest level of hygiene, and heat efficiency, offering cool conditions in the summer and warm conditions in the winter.

T:01652 648788

M: 07966 554323

pets@cornercottageboarding.co.uk

www.cornercottageboarding.co.uk

