



# Kirton First!

Kirton In Lindsey Community Newsletter

Volume 23 Issue 6 November 2025





EDUCATIONAL EXCELLENCE

# KIRTON ACADEMY

A NEW SCHOOL FOR OUR COMMUNITY



As we begin our second academic term as a new academy we would like to invite you to come and see the significant changes we have made.

School tours are the best way to get a feel for a school, you can visit lessons and meet our wonderful community.

If you would like to have a look around please email:  
[enquiries@kirtonacademy.co.uk](mailto:enquiries@kirtonacademy.co.uk)

[www.kirtonacademy.co.uk](http://www.kirtonacademy.co.uk)



## The George

Market Place  
Kirton-in-Lindsey  
DN21 4LX

Tel: 01652 240270

### Opening Hours

**Monday - Thursday**  
4.30pm – (Food 8.30) 10.00pm

**Friday** 4.00pm- (Food 8.30)  
11.00pm

**Saturday** 12.00 pm (Food 8.30)  
11.00pm

**Sunday**

**12.00 noon– Last orders 4.30 pm**

**Saturday now open all day from  
12.00 pm**

**Early Dinner Offer**

**20% OFF Total Bill**

(Includes alcohol)

**Bar Classics, Specials,  
Children's & Free From Menus**

Offer available

Monday – Thursday 4.30pm – 5.30pm

Friday 4pm – 4.45pm

Saturday 3pm - 4.45pm

Any offers not to run in conjunction with any other offers



It's hard to believe that we are coming to the end of 2025 and will soon be enjoying all the events in Kirton running up to Christmas once more.

As always there will be a lot going on before then. Get your cake fix at the Macmillan Coffee Morning as usual at the George! After the Annual Remembrance Service at the Cenotaph there will be a special free Poppy Building Session at the Brick Hut. There are reminders in the magazine of concerts, a special Open Day in the Pottery celebrating their 50<sup>th</sup> anniversary and setting it all off, the "Turn On" of the Christmas Lights in the Market Place. We can then marvel as St Andrew's Church is floodlit again!

We hope that the challenge of "Shopping Locally" is explored enthusiastically. December 6<sup>th</sup> is National Small Business Day! Then we can not only buy new but also scour the Hospice shop for surprising and quality goods!

The Editor

## CONTACT

Email - Aidan Morton [kirtonfirst@gmail.com](mailto:kirtonfirst@gmail.com) 078564 49268

Adverts - Sue Smith [suetsmith12@yahoo.co.uk](mailto:suetsmith12@yahoo.co.uk) 074854 01433

## EDITORIAL TEAM

Maggie Davies 078337 76253 Aidan Morton 078564 49268

Sue Smith 0748540 1433 Viv Porter 077698 81165

Debbie Brelsford 079352 40952

**DELIVERY TEAM** - Please contact Debbie if you are likely to be away.

## DATES FOR COPY AND MAGAZINE DISTRIBUTION IN 2026

JAN COPY 12nd DEC 2025

DISTRIBUTION 2nd week January

MAR COPY 13st FEB

DISTRIBUTION 1nd week March

MAY COPY 17th APR

DISTRIBUTION 1st week May

JULY COPY 19th JUN

DISTRIBUTION 1st week July

SEPT COPY 14th AUG

DISTRIBUTION 5st week August

NOV COPY 16th OCT

DISTRIBUTION 5th week October

***Together we have voice - singly we have none.***



# Important Contacts

## Doctors

Monday to Friday - Excluding public holidays 8:30am to 6:00pm  
Emergency calls only 8:00am to 8:30am  
6:00pm to 6:30pm

01652 648214 - Appointments and General Enquiries  
01652 241164 - Repeat Prescriptions Ordering (48 hours Notice)  
111 - Out of Hours Service

## Chemist

G Payne - Chemist Opening Hours  
Monday, Tuesday, Thursday, Friday 9:00am - 1:00pm & 2:00pm - 6:30pm  
Wednesday 9:00am - 1:00pm & 4:30pm - 6:30pm  
Saturday 9:00am - 1:00pm  
01652 648244

## Library

Monday - Closed Tuesday - 1:30pm to 6:00pm  
Wednesday - 11:00am to 5:00pm Thursday - Closed  
Friday - 9:30am to 3:30pm Saturday - 10:00am to 1:00pm

01652 648406

## Council

**Town Council (Clerk)** 01652 648978  
Public drop in sessions at the Town Council office Tuesdays and Thursdays between 12-4pm. The Clerk is available to meet at other times by appointment.

**North Lincolnshire Council** 01724 297000  
Refuse collections  
Friday Week 1 Brown and Burgundy Bins  
Friday Week 2 Grey/Green Bin and Boxes  
Waste Disposal Site  
Redbourne Mere (NB you may be asked for identification)  
Open Friday, Saturday, Sunday, Monday, and Tuesday  
Summer (1st Mark to 31 October) 10:00am to 6:00pm  
Winter (1st November to 28th February) 10:00am to 4:00pm



## Travel

Bus services from Kirton to Lincoln & Scunthorpe - Details are available at stops or by phoning "Traveline" on 08712 002233

Copies of all bus services for Kirton are available free of charge at the library.

Rail line 03457 484950

## Church

### ST ANDREW'S UNITED CHURCH

Rev Dr Michael Sheard 01652 648846  
Church Halls -enquiries- Heather Bunker 01652 648573  
General Enquiries Jane Sheard 01652 648846  
Website: [www.standrewsunitedchurch.org.uk](http://www.standrewsunitedchurch.org.uk)

### ST RADEGUNDS CHURCH, GRAYINGHAM

Services: 9am every Sunday  
Website: [www.achurchnearyou.com/grayingham-st-radegund](http://www.achurchnearyou.com/grayingham-st-radegund)  
Facebook: [www.facebook.com/radegundgrayingham](http://www.facebook.com/radegundgrayingham)

### ROMAN CATHOLIC WORSHIP ST MARY'S BRIGG

Parish Priest: Father Limnyuy Gamsi 01652 652221  
Kirton contact: Jean McFarlane 01652 648114  
Website: [www.bartonandbriggcatholicchurches.org](http://www.bartonandbriggcatholicchurches.org)

## Miscellaneous

Appletree Day Nursery	01652 649185
Archery Club	secretary.klac@gmail.com
Art Club	01652 649549 or 07849 827255
Brownies & Guides	01652 648800
DENTIST (Dr Bagga)	01652 640291
Foodbank	07396 738436
Happy Days Nursery	01652 648228
Kirton Academy	01652 648276
Jellitots Rachel	Rachel.colin@hotmail.co.uk
Kirton In Lindsey In Bloom	tanya.KLIB@outlook.com
Kirton Lindsey JFC	info@kljfc.com
Kirton Primary School	01652 648792
KLASSIC Venue Manager	07936 936961
Mini Bloomers	mini_bloomers@outlook.com
Neighbourhood Police Officer	paul.topham@humbersidepolice.uk
POLICE (Non emergency)	101
POST OFFICE	01652 648234
Scouts Group	daniel.crawshaw@northlincsscouts.org.uk
Scunthorpe Hospital	01724 282282
Table Tennis	07776 247674
Town Hall	07752 246255
Vetinary Surgeon	01427 612662

# Kirton in Lindsey Town Council

would like to invite everyone to take part in our

## Christmas Character Competition

This could be any festive character you can think of from Father Christmas to a film character like Olaf!

Characters can be displayed in your window or outside in your garden.

Judging will take place between 1<sup>st</sup> – 7<sup>th</sup> December with the winner receiving a fantastic Christmas Hamper!

If there are enough entries, will create a trail for you all!

For more information, or to register your interest in entering, please contact Cheri at [assistantclerk@kirtoninlindseytowncouncil.gov.uk](mailto:assistantclerk@kirtoninlindseytowncouncil.gov.uk)



## KIRTON IN LINDSEY TOWN COUNCIL

### CHRISTMAS FESTIVAL



Food ~ Drinks ~ Sweets ~ Gifts ~ Stalls

3pm - 7pm

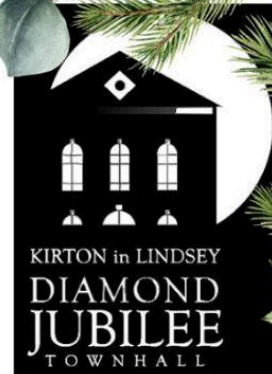
Sunday 30th November

Market Place & Town Hall

Meet Santa from 4pm  
Lights switch on at 5pm  
plus  
Fairground Rides on Sylvester St







# CHRISTMAS RAFFLE

Please help support the Town Hall

1st Prize £200

2nd Prize £100

3rd Prize £50

**£1**  
per ticket

Numbers drawn at the Christmas Festival  
on 30th November

For tickets contact: Julia at  
[finance@kirtoninlindseytownhall.co.uk](mailto:finance@kirtoninlindseytownhall.co.uk)

Scan this code:



or at the Town Hall office  
Mondays & Tuesdays 9am to 12 noon

Charity No. 1160832



# North Lincolnshire Libraries

## Kirton in Lindsey Library

Our library is a safe and welcoming space for all and offers a range of services including:

- Access to computers
- Children's Library and crafting activities
- Adult fiction and non-fiction books for loan
  - WiFi
- Blue Badge applications, by appointment only
- Blue Badge evidence scanning and photographs
- Travel pass applications, by appointment only
  - Information, Advice and Guidance
  - Scanning, printing, and photocopying

\* Weekend opening hours are for borrowing and returning books only.  
Information, advice and access to computers and printers is available on weekdays \*



Find opening times at <https://www.opac.northlincs.gov.uk/our-libraries> or  
download the North Lincolnshire Libraries app.

20 King Edward Street  
Kirton in Lindsey  
Gainsborough  
DN21 4NQ

**01652 648406**  
**[library.enquiries@northlincs.gov.uk](mailto:library.enquiries@northlincs.gov.uk)**

**North  
Lincolnshire  
Council**  
[www.northlincs.gov.uk](http://www.northlincs.gov.uk)





**Don't forget the Time Travellers Trail—the perfect way to walk off the Christmas dinner!**

Discover how the town has changed over time!

Follow the Time Travellers Trail and uncover the stories behind our old buildings and the people who lived and worked there.



SCAN TO START



<https://kilttt.quest>



**North  
Lincolnshire  
Council**

- Works from your smartphone and guides you around the town with spoken narrative, words and pictures.
- Start in the Market Place, scan the QR code and follow the instructions. The Trail can be done all at once (about 1 hour) or piecemeal, as suits, and goes down and back up the hill.
- You can also do it from your sofa or anywhere in the World! On the menu select each place to see a video, pictures and words.

**ENJOY !**







**Independent suppliers of  
LPG cylinders and  
accessories for home, farm,  
business and industry.**

**Competitive prices, no  
bottle deposit, excellent  
service.**

Call Jason on 07747 471750  
or email: [midlincsfuels@gmail.com](mailto:midlincsfuels@gmail.com)

North Cliff Farm, North Cliff Road,  
Kirton Lindsey



**FREE and  
prompt  
local  
delivery of  
LPG**



## **McLoughlin Piano Tuning**

**CGLI FSB MPTA**

**07876 661475**

**07964 368186**

**01724 336179**

**[www.mcloughlinpianotuning.co.uk](http://www.mcloughlinpianotuning.co.uk)**

**GGSTEEL.CO.**

**Your local specialist in nearly new, pre-owned,  
performance, luxury *and* family cars  
at competitive prices.**

### **Great value car service:**

**tyres**

**cambelts**

**tracking**

**batteries**

**aircon**

**timing chains**

**wheel alignment**

**MOT . . . *and more***



**We are easy to find . . .  
along Station Road  
DN21 4BD**

**Phone:  
01652 648429**

**Email:  
[sales@ggsteel.co.uk](mailto:sales@ggsteel.co.uk)  
OR book MOT online -  
[www.ggsteel.co.uk](http://www.ggsteel.co.uk)**

**We service all makes/models of cars & vans  
Phone, email - or come in to meet us**





# Castle

Building & Garden  
Maintenance

All Types of Work Undertaken

Brickwork, Roofing, Joinery  
Decorating, Plastering  
and  
Garden Work

All Jobs Considered



Call Andy on  
**07852 190091** or  
**01673 818543**

LARKRISE COTTAGE & CAMP SITE



Relatives visiting?

Do they need a  
spacious fully equipped  
home from home?

Also a seasonal camp site  
is available

We are just 1 mile from Kirton Lindsey  
Telephone John on **0773-092-7710** or  
take a look at our website on  
[www.larkriseholidays.co.uk](http://www.larkriseholidays.co.uk)

Rates negotiable

## NIGEL ALLEN PLUMBERS LTD

SERVICE, REPAIR AND  
INSTALLATION OF GAS  
APPLIANCES

POWER FLUSHING

HEATING INSTALLATIONS AND UPGRADES

LANDLORD GAS SAFETY CHECKS

TEL: 07850 559801

EMAIL: [nigel\\_allen123@hotmail.co.uk](mailto:nigel_allen123@hotmail.co.uk)

*Gas safe no is 301921*



Creating confident, independent  
children through  
a journey in music and dance



Please get in touch to see how we  
can help your Dinky Dancer start  
their journey now

Contact us now at:  
[www.musicanddancejourney.com](http://www.musicanddancejourney.com)  
[dance@musicanddancejourney.com](mailto:dance@musicanddancejourney.com)

**Tel: 01652 648563**

# 50TH

ANNIVERSARY CELEBRATION  
SATURDAY 15<sup>TH</sup> NOVEMBER



COME CELEBRATE WITH  
KIRTON POTTERY COMMUNITY

FREE DRINKS AND NIBBLES  
FROM 5PM TO 9PM

AT KIRTON POTTERY  
36 HIGH STREET, KIRTON IN LINDSEY, DN21 4LX  
07895 324553

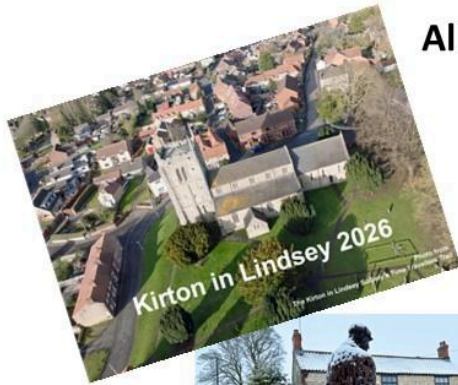




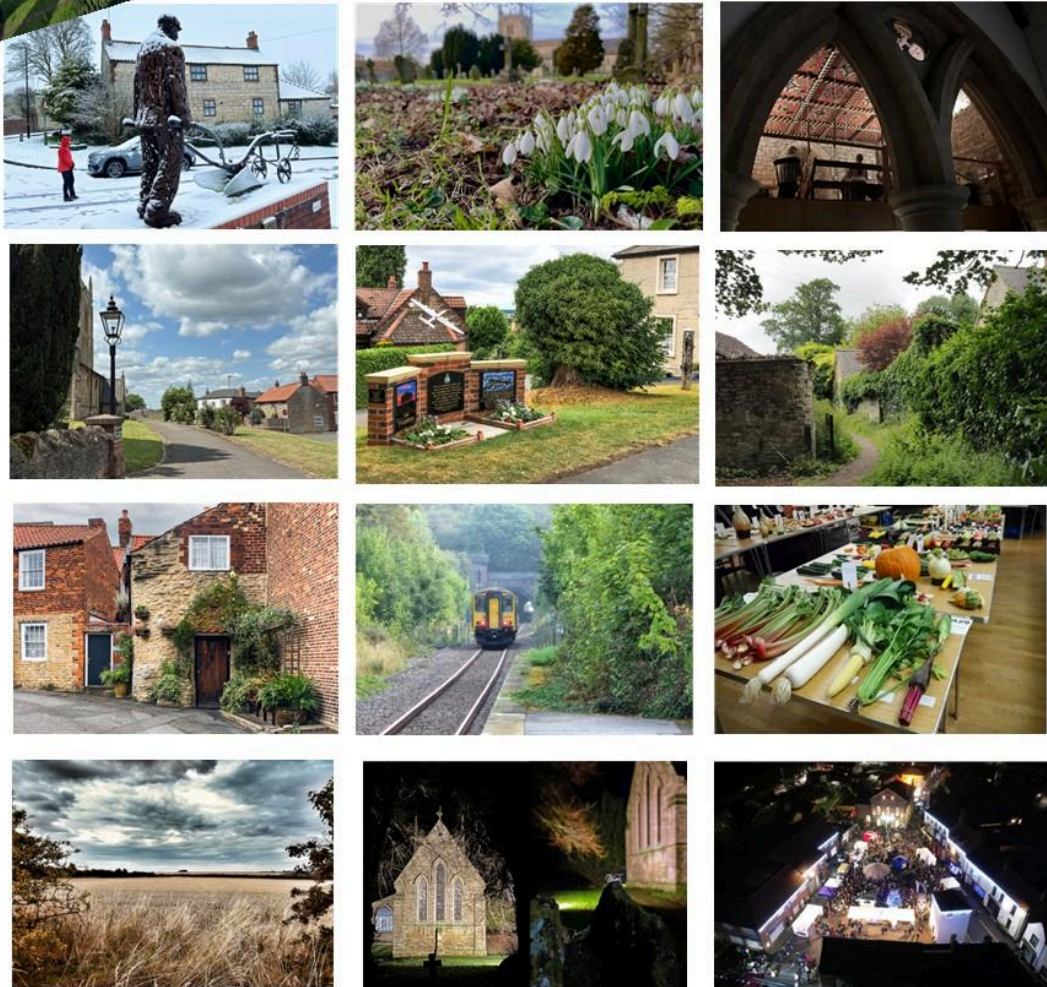
# The Kirton in Lindsey Community Calendar **£9** 2026

**Views of the town taken and voted for by residents**

All proceeds go towards the upkeep of the Town Hall



Only 100 copies printed so don't delay!  
The perfect Christmas present.



**Available at the Town Hall or contact Jo: 07752 246255 or  
[info@kirtoninlindseytownhall.co.uk](mailto:info@kirtoninlindseytownhall.co.uk)**

Registered Charity no. 1160832





## Shop Local - The Christmas Challenge



Kirton is well catered for with a wide range of shops and services. So much so that I believe, with a little creative thinking, we could fulfil just about all our festive needs within walking distance of our own front door, or a very short drive to the surrounding area.

For that perfect gift there's plenty of ideas at Jack's Patch for both personal and gifts for the home, a good range of gourmet food and drink and tableware at Uncle Henry's and gifts created by local crafters at Creative Cuppa that you won't find anywhere else. They are also holding a gift guides and needlefelt bauble making session. The Brick Hut is a must for Lego lovers of all ages and more expensive purchases can be paid for in installments. They are holding a Christmas Elf making session on 6 December and the ever-popular Christmas Traitors night for adults on 13 December. Knights could also be the answer to your gift conundrum selling a variety of electrical goods. Many people, me included, have no problem with receiving good quality "pre-loved" gifts so why not have a browse in Lindsey Lodge charity shop; that way more than one person would be benefitting from your purchase and often that is where unwanted gifts end up!. If you need more inspiration don't forget the Christmas Festival on 6 December. In the end, if you've run out of ideas you can always resort to a gift voucher. The usual High Street vouchers are available at the Post Office and garden centre vouchers at Jack's Patch. Another option is to purchase a session at The Brick Hut or Creative Cuppa.



## Shop Local - The Christmas Challenge



You can find out what's on offer by visiting the shop or checking the webpage.

Christmas cards, wrapping paper and tree decorations are generally available at the supermarkets and Uncle Henry's. However, you will find a huge range of these plus an amazing selection of Christmas lights at Jack's Patch.

Foodwise there are four supermarkets, two farmshops nearby plus Uncle Henry's, Jack's Patch and Teesdale's bakery, who also take orders for Christmas cakes. The town also boasts its own chocolatier so we've got both basic and gourmet food covered.

Why not stay local for your Christmas "get together". The George is central and has accommodation. A short distance from Kirton there is the ever-popular Shires and the elegant Cleatham Hall. All of which are open for lunches and evening meals. For lunchtime gatherings Uncle Henry's, Jack's Patch and the Butcher's Bistro have varied menus and, if you want a sweet treat, Sylvia's has delicious home-made cakes.

If you're looking for something new to wear you could check out Bon Marche at Jack's Patch for something casual, formal or festive. Admittedly it just has women's wear and the menswear available in Jack's Patch is limited to leisure/sportswear.



## Shop Local - The Christmas Challenge



Even if you can't find everything you need in and around Kirton, buy locally where possible to support our local businesses and consider the environment at the same time. Also, shopping at the Lincoln Co-op will benefit Kirton First and Kirton Scouts as the Community Champions.

---

## **EMBARGOED FRIDAY 19<sup>TH</sup> SEPTEMBER 6PM**

### **Lindsey Lodge Hospice Launches Memorial Tree to Celebrate and Remember Loved Ones**

**SCUNTHORPE, North Lincolnshire** – Lindsey Lodge Hospice and Healthcare has announced the launch of a new memorial tree, offering a meaningful way for people to honour and remember loved ones. The tree is located in the Hospice's peaceful gardens, providing a serene setting for quiet contemplation and reflection.

Each leaf on the tree tells a personal story, representing a life that was much loved. The tree itself is a living tribute, a place for people to reflect on cherished memories. The leaves are available in three colours: mahogany (matte metal), gold (gloss metal), and green (translucent acrylic). Supporters can choose to place a leaf on the tree for one year (£120), three years (£300), or a lifetime (£1500). After the chosen period, the leaf can either be renewed or taken home as a keepsake.

Funds raised from the memorial tree will go directly towards supporting the vital work of Lindsey Lodge Hospice. The Hospice provides specialist palliative and end of life care and life-enhancing wellbeing services to people living with progressive life-limiting illnesses in North Lincolnshire,





Anne Currie, Chief Executive of Lindsey Lodge Hospice and Healthcare added:

"We believe it's important to give people a dedicated place to remember those they have lost," said Anne. "This memorial tree is open to anyone who has lost a loved one, regardless of whether they were a patient at the Hospice. It's a beautiful and lasting way to honour a life whilst helping us to continue providing our much needed services."

The stunning tree was made with support from local companies. The tree itself was built at cost by local company SC4 using CORTEN weathering steel. The leaves were donated by Locate, with engraving support from Cobweb Crystal, and the project was also supported by NFU Mutual Epworth Branch. We would like to thank our local business community for their support with this initiative.

The new memorial tree is more than just a piece of art; it is a symbol of hope and remembrance. By purchasing a leaf, individuals are helping to ensure their loved one's name lives on while also enabling the Hospice to continue creating new memories for other families from across the county.

For more information, or to purchase a leaf, please visit the Lindsey Lodge Hospice website at [lindseylodgehospice.org.uk](http://lindseylodgehospice.org.uk)

**About Lindsey Lodge Hospice and Healthcare** Situated in North Lincolnshire, Lindsey Lodge Hospice and Healthcare has been providing high-quality, compassionate care to local people and their families for over 30 years. The dedicated team of staff and volunteers supports hundreds of people each year, including patients and their family members or carers. Demand for the Hospice's services are continually growing, and the team is committed and passionate about providing the best possible care for those who need it most.

**Contact:** Elizabeth Welch, Marketing Manager, Lindsey Lodge Hospice and Healthcare  
01724 270835, 07935 709 825 | [marketing@lindseylodgehospice.org.uk](mailto:marketing@lindseylodgehospice.org.uk)





Administered by  
Kirton in Lindsey Town Hall  
Registered Charity No: 1160832

**Are you in the midst of a crisis and  
need a short term supply of food?**

**TEXT 'HELP' TO  
07396 738436**

**We are here year-round for everyone in  
Kirton in Lindsey.**

**(We are unable to cover other areas).**

**You do not need a referral and  
our service is entirely confidential.**

**We can only deliver Monday-Friday.**



Burton & Dyson have been providing legal advice to individuals and businesses in Lincolnshire for more than 150 years.

No two clients are the same, which is why our services are individually tailored to meet your exact needs.

We pride ourselves on building strong and enduring relationships with our clients and look forward to being able to assist you, whatever your requirements.

**Our specialist services include:**

- Business & Employment
- Commercial property
- Moving home
- Estates & Probate
- Wills & Trusts
- Powers of Attorney
- Family & Child Care
- Fixed Fee Divorces
- Notary Public

**You can get in touch with us in any of the following ways;**

**Call 01427 610761 | Email [info@burtondyson.com](mailto:info@burtondyson.com) | Visit 22 Market Place, Gainsborough**

**[www.burtondyson.com](http://www.burtondyson.com)**

22 Market Place • Gainsborough • Lincolnshire • DN21 2BZ  
01427 610761 • [info@burtondyson.com](mailto:info@burtondyson.com)



# PC DOCTOR

**Computer problems solved  
in your own home**

**Virus and Spyware Removal**

**Broadband and Wireless**

**PC Cleanup**

**Hardware Repair**

**Networking, Data Recovery**

**Laptop Repairs (screens etc)**

**Established in 2000**

**Reliable Long Running Business**

**Now Based in Kirton Lindsey.**

**07961572153**

## Kirton in Lindsey in 2025 update

'Kirton in Lindsey in 2025' – a record of the town as it is in 2025 - is progressing and I would like to extend thanks to everyone that I have met with so far and for all the help and enthusiasm they have keenly and freely given.

The record will cover sections including a description of the town, landmarks, transport, charities, events, infrastructure & development, weather, education, religion, health & emergency services, businesses, groups and organisations, communications, local government, agriculture, lifestyle and the context of the outside world.



The work builds on records produced by Kirton in Lindsey Women's Institute in 1965 and 1997, and won't be finished until the early part of 2026, in order that the information from 2025 is complete. I am still keen to involve as many different aspects of the town as possible, and would welcome contributions and information. You can get in touch via email at [KL20Five@gmail.com](mailto:KL20Five@gmail.com) and please look out for more updates.

Thank you, Neil Taylor-Matson

## Torksey's Charity

*Financial support for residents of Kirton in Lindsey*

**Do you know someone who could benefit from financial support or equipment, services or facilities which will greatly benefit them but is out of their reach?**

Torksey's Charity (Registered Charity Number: 251454) is embedded in the history of Kirton in Lindsey and is still here to provide financial support to residents.

The charitable aims are to 'provide the relief of residents in Kirton in Lindsey in need, by reason of youth, age, ill health, disability, financial hardship or other disadvantage by providing finance, services or facilities to relieve their specified need.'

The Trustees of the charity are all members of the community and all applications for support should be addressed to the Clerk to the Charity who will anonymise the request so that the identity of the applicant is not known and is kept completely confidential. A meeting of the Trustees will be called and a decision made on the application.

If you know anyone in need of finance, services or facilities within Kirton in Lindsey, or are in need yourself, contact the Clerk to the Charity who will then action the process for consideration of any request.

### Contact details:

Torksey's Charity, c/o Diamond Jubilee Town Hall, High Street,  
Kirton in Lindsey, North Lincolnshire, DN21 4LZ  
e-mail: [torkseys@gmail.com](mailto:torkseys@gmail.com)

Torksey's Charity: Registered Charity Number: 251454





## **Kirton in Lindsey Town Council - November 2025 update**

### **Civic Service 2025**

The Mayor held her Civic Service on Sunday 5th October, with the Brownie, Scouting sections (Beavers, Cubs & Scouts) and the Royal British Legion flag bearing. The service included a performance by the Rock Choir. £229.88 was generously donated and this will be split between St Andrew's United Church and the Royal British Legion Kirton in Lindsey which is the Mayor's chosen charity for her term of office.

### **Councillor Co-Option**

A vacancy for one Town Councillor with Kirton in Lindsey Town Council arose following the resignation of Cllr Kathy Cooper in June. At the September Full Council meeting seven applications were received. The interest in becoming a Town Councillor with Kirton in Lindsey Town Council is hugely encouraging - showing the interest residents have in the town and in what can be achieved by the Town Council for the town. At the meeting Chris Howard was the successful candidate and the Town Council welcomes Chris Howard as Town Councillor for Kirton in Lindsey. Thanks also go to Kathryn Allsopp, Susanne Law, Ellen Lumgair, Antony Pollitt, Victoria Rumary and Gianni Vercetti for their interest and applications for role. Members of the public are always very welcome to attend Town Council meetings.

### **Christmas Festival**

The annual Christmas Festival and Lights Switch on will be held on Sunday 30th November, look out for more information in this issue of Kirton First and displayed around the town. If you would like to be involved, please get in touch. Contact details are on the Councillors details page in this issue of Kirton First.

### **Christmas sponsorship**

We are seeking businesses, groups or organisations who would like to be involved with sponsorship of town events, including the Christmas Festival. In previous years the A Team have generously funded the Town Christmas Tree and local businesses and supermarkets donated to provide gifts for the children from Santa. These businesses are no longer able to do this. If you would like more information or can help in anyway, please get in touch with us.

### **Grant Funding**

Grants are available through the Town's Precept for community groups and projects. Groups applying must have a constitution and a bank account with two signatories, and we are unable to fund individuals. The 2026-2027 application period for Budgeted Grants is now open and will close on Monday 17th November. We also have a Community Pot for smaller grants (up to £300) which is open all year round. Further details are available from the Town Clerk.

### **Civic Award**

Each year the Town Council receives nominations from residents uses these to present the annual Civic Award. If you know someone who has contributed to the local community, has gone out of their way to help others, or has acted above and beyond their call of duty, please get in touch and let us know. The Annual Civic Award is a great way to show your gratitude to those who may not usually get the recognition they deserve. The deadline for nominations is Monday 8<sup>th</sup> December.

### **Winter Weather**

Salt bins are provided, stocked and refilled by North Lincolnshire Council. Don't leave a salt bin running low as you never know when you or someone else might need to use it.

If a salt bin is in need of refilling, contact North Lincolnshire Council with the exact location on Tel: 01724 297000 or online via their website. Let's work together to keep Kirton in Lindsey safe and moving through the winter.



## **Kirton in Lindsey Town Councillors 2025-2026**

### **Cllr Hazel Fox – Mayor 2025-2026**

Farringford, 18 Spa Hill, DN21 4BA

**Telephone:** 07966 787044

**E-mail:** [kirtoncllrfox@outlook.com](mailto:kirtoncllrfox@outlook.com)

**Mayoral Charity 2025-2206: The Royal British Legion of Kirton in Lindsey**

### **Cllr Joy Kofoed – Deputy Mayor 2025-2026**

Lowfield Close, Kirton in Lindsey

*Contact via the Town Clerk only*

### **Cllr Pat Frankish**

1 North Cliff Road, DN21 4NJ

**Telephone:** 01652 649365 (home)

07836 528310 (mobile)

**E-mail:** [pat.frankish@btinternet.com](mailto:pat.frankish@btinternet.com)

### **Cllr David Garritt**

Beckingham House, 27 Ings Road,  
DN21 4BU

**Telephone:** 07824 889616 (business mobile)

**E-mail:** [dsgarritt@gmail.com](mailto:dsgarritt@gmail.com)

### **Cllr Karen Gunn**

**Telephone:** 01652 648363

**E-mail:**

[karenlmetheringham@googlemail.com](mailto:karenlmetheringham@googlemail.com)

*Other contact via the Town Clerk only*

### **Cllr Chris Howard**

**E-mail:** [kirtoncllrhoward@outlook.com](mailto:kirtoncllrhoward@outlook.com)

*Other contact via the Town Clerk only*

### **Cllr Barry Starkie**

23b Ings Road, DN21 4BU

**E-mail:** [starkie931@btinternet.com](mailto:starkie931@btinternet.com)

**Telephone:** 07876332188

### **Cllr Suzanne Stephenson**

3 Whitehoe Farm, Gainsborough Road,  
DN21 4EN

**E-mail:** [sstephenson074@gmail.com](mailto:sstephenson074@gmail.com)

*Other contact via the Town Clerk only*

There is currently **a vacancy** for a Town Councillor – this will either be filled via election or a process called Co-Option, with your current Town Councillors making a choice from applications received at a meeting of the Council. The vacancy came available as Kirton First was going to press, so look out for more information soon.

### **All Councillors are contactable via the Town Clerk**

*The Town Council rent office space within the Diamond Jubilee Town Hall:*

Town Council Office, Diamond Jubilee Town Hall, High Street, Kirton in Lindsey, DN21 4LZ

**Public opening hours Tues & Thurs 12 noon to 4pm,**

*Clerk is available at other times by prior appointment.*

**Telephone:** 01652 648978 / 07518 284173

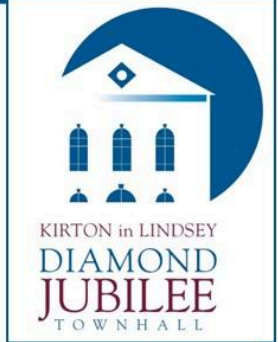
**E-mail:** [enquiries@kirtoninlindseytowncouncil.gov.uk](mailto:enquiries@kirtoninlindseytowncouncil.gov.uk)

Find us on Facebook: "Kirton in Lindsey Town Council"

**Website:** [www.kirtoninlindseytowncouncil.gov.uk](http://www.kirtoninlindseytowncouncil.gov.uk)



## Regular activities at Kirton in Lindsey Town Hall.



### Weekly:

**Town Hall Office Open** - Mondays & Tuesdays 9am - 12 noon

**Town Council Office Open** - Tuesdays 12 - 4pm (Clerk 01652 648978)

**Evergreens** - Tuesdays 2-4pm (Barry 07876 332188)

**Seated Exercise** - Wednesdays at 10-11am (North Lincolnshire Council Active Communities Team: 01724 297270)

**Tai Chi** – Wednesdays 11.15-12.45 (George -01427 617171)

**Rock Choir** - Wednesdays 7-8.30pm Register at <https://rockchoir.com/>

**Pilates with Louise** – Thursdays 10 –11am (Louise 07790 759003)

**Town Council Office Open** - Thursdays 12 - 4pm (Clerk 01652 648978)

**Slimming World** - Fridays at 9.30- 11.30am

**Community Shop** - Fridays at 1-1.45pm.

### Monthly:

**Tea Dance** - 2nd Monday 2-4pm (Jenny 01652 640281)

**WI** – 2nd Tuesday 7.30-10pm (Gill 07714 240053)

**Kirton in Lindsey Society** – 4th Tuesday 7.30-9.30pm (Martin 01652 648435)

**KLAYS (amateur gardeners)** – 3rd Wednesday (Sarah 01652 409717)

**Cupcakes, Coffee and Chat** - 1st Saturday 10am – 12 noon

**Town Hall Craft Club** – 4th Saturday 1-4pm

**Town Hall Live** - various dates (Brian - 01652 649230)

Information correct at the time of going to press but situations change. Any later developments will be on our website and short-notice changes will be posted on our Facebook page so do keep checking. Some activities will take a break over the Christmas period. If in doubt, contact **Jo** on [info@kirtoninlindseytownhall.co.uk](mailto:info@kirtoninlindseytownhall.co.uk) or ring **07752 246255**

[www.kirtoninlindseytownhall.co.uk](http://www.kirtoninlindseytownhall.co.uk)

Charity Number 1160832

# DRY AMD?

(AGE-RELATED MACULAR DEGENERATION)

## TREATMENT AVAILABLE NOW!

**Hospital Grade Advanced  
OCT Eye Exams**

by Dr Janjua

**Specialist Lenses  
For Various  
Eye Conditions**

**Widest Variety  
of Frames  
in Brigg**

**O'BRIEN'S  
OPTICIAN  
ESTD.1979**

**enquiries@obriensopticians.co.uk  
www.obriensopticians.co.uk  
43/44 Wrawby Street,  
Brigg,  
North Lincolnshire DN20 8BS**

**01652 653 595  
01652 649 024**





# CLEATHAM HALL NEWS

## Celebrating Life at Cleatham Hall

### Celebrating Family and Friends, Birthdays and Anniversaries.

Feel relaxed and enjoy the hospitality we are renowned for while enjoying a relaxing meal. So, if there are just 2 or 52 of you, contact us by email or phone to book your own personal celebration.

### Restaurant Opening Times:

Wed - Sat: 12pm - 8:30pm

Sunday Lunch  
12pm - 4pm

### Events planned for this year book early and make sure you don't miss out:

- We have now scheduled an "Adamms family themed" Halloween party on the 31st October.
- Our Christmas starts with a Wreath making and afternoon tea on the 28th November, followed by our annual Cleatham Christmas fair on the 29th with a visit from Santa, gift stalls and our fabulous Christmas café.
- Then on the 12th December our "Darwin Story" Murder Mystery dinner returns!!
- Festive menus will commence on the 30th November

The restaurant is open daily from Wednesday to Sunday. Watch out for our Autumn menus starting in September.

Try our Sunday Lunch, or weekday Lunch 2 course, Table d'hôte menu from £20, our celebrated Afternoon teas and of course Dinner menu. All using homemade seasonal jams and chutneys, available to buy.

Brunch served from 9 – 11am, Lunch served from 12 to 3pm, Afternoon Teas from 1 to 4pm Dinners from 6 to 8.30 pm

See our website at [www.cleathamhall.com/events](http://www.cleathamhall.com/events) for our menus and pricing

To book call: 01652 649402 or email: [enquiry@cleathamhall.com](mailto:enquiry@cleathamhall.com)



Cleatham Hall, Cleatham, North Lincolnshire, DN21 4JS

[www.cleathamhall.com](http://www.cleathamhall.com)

Tel: 01652 649402

Email: [enquiry@cleathamhall.com](mailto:enquiry@cleathamhall.com)



# K A G G

## KIRTON AREA GAMING GROUP



Join us every Sunday from 6pm to 9pm at KLASSIC Park, Kirton in Lindsey, for our regular evening of gaming fun and friendly competition!

Whether you're into board games, card games, minis, or RPGs, there's something for everyone. Choose from our club collection or bring along your own favourites.

🎲 Love Magic: The Gathering? 🏰 Obsessed with Warhammer? 🎲 Prefer classics like Catan, Ticket to Ride 🚂, or Talisman? Maybe you're hooked on Wingspan 🐦 or deep into Dungeons & Dragons 🐉 - we've got it all and more!

Try your first evening free, then optional donation of £3.  
New faces always welcome - come roll some dice with us! 🎲



Website

 [facebook.com/kirtonareagaminggroup](https://facebook.com/kirtonareagaminggroup)  
 [kirtongaming](https://www.instagram.com/kirtongaming)  
 [@kirtongaming](https://twitter.com/kirtongaming)  
 07752 346 100



Facebook



# Roll the Dice with Kirton's Own Gaming Group, KAGG

Did you know that right here in Kirton in Lindsey there's a welcoming group of people who come together to play games, make new friends, and have fun? That's exactly what the **Kirton Area Gaming Group (KAGG)** is all about!

KAGG meets every Sunday evening from **6pm to 9pm at KLASSIC Park**. The group is keen to welcome anyone who enjoys board games, card games, tabletop miniatures, or role-playing adventures. It doesn't matter if you're completely new to the hobby or a seasoned gamer; there will always be a friendly face to welcome you in and, if required, help you find your way.

The club's current games collection includes modern classics like **Catan, Ticket to Ride, and Talisman**, alongside strategy favourites such as **Scythe and Dune**. There are also family games like **Happy Little Dinosaurs**, and the atmospheric fantasy roleplaying aspect of **Dungeons & Dragons**. Perhaps you prefer collectible card games like **Magic: The Gathering**, or the rich hobby world of **Warhammer**? You'll find fellow enthusiasts here at KAGG. Got a favourite not mentioned here? Members are always welcome to bring along their own games to share with the group.

KAGG is a very special gaming group as it's incredibly diverse; there really is something for everyone, no matter your age or gaming interest. Some people love the epic battles of miniature wargaming, others prefer the light-hearted fun of a fast-paced board game. Maybe an immersive, story-driven roleplaying session is more your thing. No matter what your preference, you are assured of a warm welcome, plenty of laughs and a relaxing brew.

The first evening is **completely free** - all you need to do is pop along, try it out, and see if it's for you. After that, there's an *optional* donation of just **£3 per session**, which helps keep the group running by paying for the hall hire.

So, if you're looking for a new hobby, an easy way to make new friends, or want a fun way to fill your Sunday evening, why not give KAGG a try? Bring a friend, bring the family\*, or just bring yourself - you'll be rolling dice and making memories in no time.

 **Every Sunday, 6–9pm**

📍 **KLASSIC Park, Kirton in Lindsey**

🌐 More info: [kagg.co.uk](http://kagg.co.uk) | [facebook.com/kirtonareagaminggroup](https://facebook.com/kirtonareagaminggroup)

\*Under 16's must be accompanied by a responsible adult. Please also note that some of our games can be quite complex, so make sure they're comfortable with the types of games we typically play - alternatively you're welcome to bring games they already know and enjoy!



# AMARA CARE

Supporting Meaningful Lives...

**Amara Care is a Domiciliary Care Agency located in North Lincolnshire and Lincolnshire registered with the Care Quality Commission.**

**We provide services for:**

- Adults with physical disabilities
- Adults with sensory loss including dual sensory impairment
- Adults with mental health issues
- Adults with learning disabilities
- Children and their families
- Dementia
- Older adults

**We take referrals from:**

- Individuals
- Social Services
- Health Services
- Direct Payments
- Individual Budgets
- Independent Living Fund
- Private arrangements

**Support Services Available:**

- Up to 24 hour support packages
- Personal care
- Medication care / support to attend medical / GP appointments
- Help with household tasks
- Support getting in and out of bed
- Shopping
- Preparing meals
- Trips out and keeping active
- Tenancy support

**Looking for a Career  
in Support Work?**

Please contact us for  
our current vacancies!

If you are looking to arrange support for yourself or someone you know, or if you would like further information on any of the services we have to offer, please contact us on:

**Tel: 01652 648335**

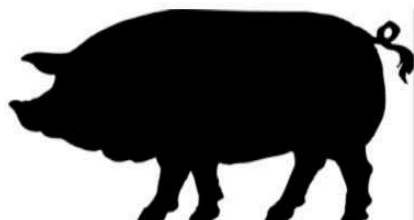
**Email: [admin@amaracare.co.uk](mailto:admin@amaracare.co.uk)**

**Artemis House, 25 High Street, Kirton in Lindsey, DN21 4LX**



## LARKRISE FARM SHOP

Your Local Sausage and pork products straight from the farm



Plus general groceries

**JUST DOWN GAINSBOROUGH  
ROAD**

Open nearly every day 9am to  
early evening



### TIGHE GROUP OF COMPANIES

**SHOT BLASTING & SPECIALISED  
COATINGS, DOMESTIC, MARINE &  
INDUSTRIAL PAINTING CONTRACTORS**

Jack Tighe Ltd & Jack Tighe Decorating Ltd  
Redbourne Mere, Kirton Lindsey  
Tel: 01652 640003 Fax: 01652 648159

*Shop Applied Specialised Coatings:*

Scunthorpe Works  
Tel: 01724 861879 Fax: 01724 280005

Doncaster Works  
Tel: 01302 880360 Fax: 01302 880370

[www.jacktighe.com](http://www.jacktighe.com)  
[sales@jacktighe.com](mailto:sales@jacktighe.com)

## R & A Accountancy Services (Lincs) Ltd

Small & Friendly with 30 years + experience

We specialise in providing a personalised accounting and taxation service for sole traders, partnerships, sub-contractors, CIS tax refunds and individuals.

We can tailor our service to offer:-

- ☆ Year End Accounts
- ☆ Self Assessment Tax Returns
- ☆ VAT Returns
- ☆ And much more...

Call us today - Your initial consultation is free!!

Telephone: 07932 089256

Email: [richard@ra-lincs.co.uk](mailto:richard@ra-lincs.co.uk)

# 07594 353385



Find us on Facebook  
[www.facebook.com/acechimneys](http://www.facebook.com/acechimneys)



## ACE CHIMNEY SWEEPS

- Chimney Sweeping
- Chimney Repairs
- Nest Removal
- Bird Guards & Cowls
- Stove Servicing & Parts
- Tar & Creosote Removal

**Kirton in Lindsey**  
**Actively Supporting Sport**  
**In the Community**

# KLASSIC

The Trustees look forward to welcoming Lullababy to KLASSIC. Regular sessions will start next year but watch out for some introductory times over the next few months. Contact Jasmine at [Lullababy.jasmine@outlook.com](mailto:Lullababy.jasmine@outlook.com) for more information.

**KLASSIC contact details and to book the hall/field-**  
 936961

Email: [klassicinfo@aol.com](mailto:klassicinfo@aol.com)

Phone: 07936

[www.facebook.com/klassicpark/](http://www.facebook.com/klassicpark/)

You can also text or WhatsApp using the above phone number.

Hire rates are very reasonable with discounts for regular users. Please contact me for more information - Cheri

## **Babies & Children**

### **Lullababy**

Contact Jasmine -

Email: [lullababy.jasmine@outlook.com](mailto:lullababy.jasmine@outlook.com)

### **First Kirton in Lindsey Scout Group**

(Scouts, Cubs & Beavers)

Contact Sarah -

Email: [geckirtonscouts@yahoo.com](mailto:geckirtonscouts@yahoo.com)

### **Cook Stars**

Contact Helen -

Email: [helen.walker@cookstars.co.uk](mailto:helen.walker@cookstars.co.uk)

## **Wellbeing & Fitness**

### **Soundbath**

Contact Louise -

Text 07790 759003

### **Tai Chi**

Contact May Lai -

Text Only 07952 578068



## **Crafts & Others**

### **Kirton Kreators Craft & Sewing Group**

Contact Judith -

Email: [jafreeborn47@gmail.com](mailto:jafreeborn47@gmail.com)

Phone: 07519 090022

### **Art Class**

Contact Tony -

Phone: 07895 992816



### **Companion Minds Dog Training**

Contact Kate -

Website: [www.companion-minds.com](http://www.companion-minds.com)

### **Kirton WI**

Contact Alison -

Email: [alison.birkett@yahoo.com](mailto:alison.birkett@yahoo.com)

### **Kirton Area Gaming Group**

Contact Darren -

Email: [info@kagg.co.uk](mailto:info@kagg.co.uk)



### **Mini First Aid**

Contact Zoe -

Email: [zoe.reddin@minifirstaid.co.uk](mailto:zoe.reddin@minifirstaid.co.uk)

## **Sport**

### **Kirton Bowls Club & Short Mat Bowls**

Contact Bernard or Barbara -

Phone: 07931 383228

Email: [bernard.sims@hotmail.co.uk](mailto:bernard.sims@hotmail.co.uk)

### **Kirton Lindsey Table Tennis Club**

Contact Val -

Email: [valschofield27@aol.com](mailto:valschofield27@aol.com)

Website: [kirtontt.wixsite.com/kirtontabletennis](http://kirtontt.wixsite.com/kirtontabletennis)

### **Kirton Lindsey Junior Football Club**

Contact -

Email: [info@kljfc.co.uk](mailto:info@kljfc.co.uk)

Website: [www.kljfc.co.uk](http://www.kljfc.co.uk)

### **KLOTS**

Contact Adam Delsignore -

Phone: 07484 680471

### **Adult Football**

Contact Joe -

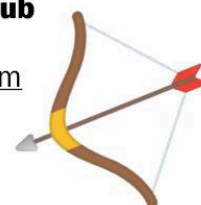
Email: [berridge.joe@googlemail.com](mailto:berridge.joe@googlemail.com)

### **Kirton in Lindsey Archery Club**

Contact Daniel -

Email: [coaching.klac@gmail.com](mailto:coaching.klac@gmail.com)

Website: [www.klac.co.uk](http://www.klac.co.uk)







# Winter Concert

Seasonal songs, music  
and readings

Wednesday  
10th December  
7.30pm

The Diamond Jubilee Town Hall  
Kirton in Lindsey DN21 4LZ

Tickets: £8 (16 & under FREE) From:  
Mary Hollingsworth 01652 648435  
or on the door

All raffle proceeds in aid of L.I.V.E.S





*the kirton in lindsey society*

City of Lincoln

**WAITES**



# Crying Christmas

The City of Lincoln Waives will proclaim the start of Christmas with a concert of medieval music and readings of the ancient cries of Christmas.

**7.30pm Tuesday 16th December**  
**Diamond Jubilee Town Hall Kirton in Lindsey**  
**DN21 4LZ**

**Tickets: £2 members £10 non-members**  
includes Christmas nibbles, mulled wine & a raffle

From: Martin on 01652 648435 or  
[enquiries@kirtoninlindseysociety.org.uk](mailto:enquiries@kirtoninlindseysociety.org.uk)  
or scan the QR code:



registered charity no. 702378



## **Come and join us for Lincoln's unique 600-year-old tradition to welcome in Christmas.**

Back in the 1480s, Christmas was 12 days of religious worship, gambling, partying and the consumption of a great deal of alcohol! On St Thomas's day (21st December) the **Cries of Christmas** proclaimed the start of the festive season when all men were free to do as they liked with no fear of arrest, other than by a writ from the king.

In 1565, in Lincoln, the words of the cries were written down to preserve them. The men delivering the cries were members of the **City of Lincoln Waites** and there is a record of 1571 of three of the mayor's officers being provided with new livery coats out of public funds for Crying Christmas. Waites were the mayor's musicians with a civic duty to play music and present entertainment at special occasions and ceremonies such as 'Mayor Making' or a visit from an important person. The custom of Official Town Waits died out in most English Boroughs soon after the Municipal Corporations Act (1835) was passed but Lincoln was unusual in retaining at least one Wait until 1857.

The City of Lincoln Waites you see today were re-formed in 2007 and recognised as official musicians of the Mayor of Lincoln on 21st April 2009. They are proud to be keeping alive the ancient tradition of Crying Christmas. They dress in period costume and play instruments of the time.

This really is a special opportunity to see something very unusual. It will be a great night.



# Frankish Psychological Services

Promoting Independent Living



Peggy's

Counselling

## Psychology & Assessments

All Referrals welcome  
including self referrals

**NO LONG WAITING LIST**

**Official Diagnosis using the  
NICE guidelines & DSM5  
criteria.**

- *Autism Assessments*
- *ADHD Assessments*
- *WISC assessments*
- *Therapy*
- *and more*

## Counselling and Psychology available:

***Face to Face and Online  
therapy appointments  
available!!***

- *Person centered approaches*
- *A safe space to talk*
- *Supporting adults ,children and families*
- *Mental Health Support*
- *Supervisions*
- *lots more to offer*



 **01652 648335**

 **[admin@patfrankish.co.uk](mailto:admin@patfrankish.co.uk)**

 **Frankish Psychological & Counselling services**



**Artemis House, 25 High Street, Kirton in Lindsey, DN21 4LX**



Bring this Voucher with you to your first appointment to receive **20%** off your first therapy appointment.

**Please note this offer is only available for therapy only, assessment fees apply.**



The British  
Psychological Society

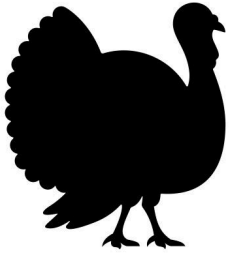


'Peggy's Counselling' and 'Frankish Psychological Services' are trading names of Amara Care Limited.



# Talking Turkeys

Be nice to yu turkeys dis christmas  
Cos turkeys just wanna hav fun  
Turkeys are cool, turkeys are wicked  
An every turkey has a mum.  
Be nice to yu turkeys dis christmas,  
Don't eat it, keep it alive,

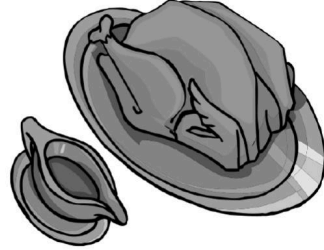


It could be yu mate, and not on yu  
plate  
Say, Yo! Turkey I'm on your side.

I got lots of friends who are turkeys  
An all of dem fear christmas time,  
Dey wanna enjoy it, dey say humans destroyed it  
An humans are out of dere mind,  
Yeah, I got lots of friends who are turkeys  
Dey all have a right to a life,  
Not to be caged up and genetically made up  
By any farmer and an his wife.

Turkeys just wanna play reggae  
Turkeys just wanna hip-hop  
Can you imagine a nice young turkey saying,  
'I cannot wait for de chop!'  
Turkeys like getting presents, dey wanna watch  
christmas TV,  
Turkeys hav brains an turkeys feel pain  
In many ways like you an me.

I once knew a turkey called  
Turkey  
He said 'Benji explain to me please,  
Who put de turkey in christmas  
An what happens to christmas  
trees?'  
I said 'I am not too sure turkey  
But its nothing to do with Christ Mass  
Humans get greedy an waste more than need be  
An business men mek loadsa cash'.



Be nice to yu turkey dis christmas  
Invite dem indoors fe sum greens  
Let them eat cake an let dem partake  
In a plate of organic grown beans,  
Be nice to yu turkey dis christmas  
An spare dem de cut of de knife,  
Join Turkeys United an de'll be delighted  
An yu will mek new friends 'FOR LIFE'.  
*Benjamin Zephaniah*

---

## Macmillan Coffee Morning

7<sup>th</sup> November 2025  
9.30am to 12 noon  
The George Hotel,  
20 High Street  
Kirtlington in Lindsey  
DN21 4LX

call Claire Startin on 07800524880  
or email [claire.startin@yahoo.co.uk](mailto:claire.startin@yahoo.co.uk)



Please join us for coffee and cake all for a good cause.  
Funds raised go to our local Macmillan services.  
Cakes and raffle prizes gratefully received too. Thank you



Funeral Director N.A.F.D

**F. S. Machin**

24 HOUR PERSONAL SERVICE  
PRIVATE CHAPEL OF REST

*A Family Business Serving Kirton in  
Lindsey and the  
Surrounding Area for over 60 years*

GOLDEN CHARTER PRE-PAID  
FUNERAL PLANS AVAILABLE

5 March Street, Kirton in Lindsey  
01652 632205

**AngelaPowell**  
The Lettings Specialists

Calling All  
**LANDLORDS**

Our team has a wealth of local knowledge,  
coupled with experience and commitment to  
offering a friendly, professional service to all clients.

Contact us for a no obligation valuation and  
assessment of your property including advice  
on potential rental income.

Zoopla



rightmove

01652 654269

www.angelpowell.co.uk

**KATHRYN DEAN THERAPIES**  
SPORTS & REMEDIAL

**KATHRYN DEAN  
SPORTS & REMEDIAL  
THERAPIES**

North Cliff Farm  
North Cliff Road  
Kirton Lindsey  
Lincolnshire

Tel: 07747 471752  
Email:

kathryndean18@gmail.com  
New website coming soon!



**Soft Tissue Therapist (qualified to Level 5)  
incorporating Sports and Remedial  
Massage, Sports Injury Assessment &  
advanced treatment techniques.  
Clinical & Maternity Reflexologist  
Complementary Therapist**

**Soft Tissue Therapists** work successfully alongside physiotherapists  
chiropractors and osteopaths. A clinical therapy that uses massage  
techniques to manipulate the body's soft tissue. Used to assess and  
prevent injury, treat sports and non sport related injury, relieve muscle  
tension, swelling and pain. Using a variety of neuro-muscular  
techniques to provide an accurate, effective treatment.

**Reflexology** is very popular in the treatment of many conditions  
such as digestive disorders, arthritis, stress related illnesses and  
allergies to name but a few.

**Maternity reflexology** is a wonderful way of helping ladies cope  
with the aches and pains during pregnancy, after birth and during  
menopause. I also help couples with fertility issues.

**Thermo Auricular Therapy (ear candling)  
& Indian Head Massage** also available.

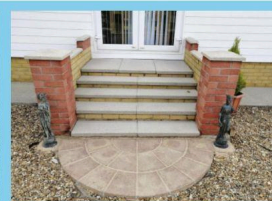
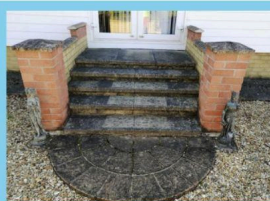
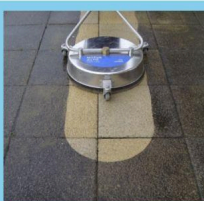
**GIFT VOUCHERS AVAILABLE**

Please contact Kathryn Dean ISRM, AOR for more details or to  
make an appointment.

**POWERBLAST**

Specialists in Drive, Roof & Gutter Cleaning

**Struggling with areas covered in Moss, Dirt and Grime? Gutters Overflowing? Then we have the answer!**



**Our equipment brings up surfaces like new!**

Removes ingrained **Dirt, Algae, Moss, Lichen, Black Spots** & all winters **Grime!**  
**Softwashing & low pressure** cleaning for delicate areas. **Repairs & Sealing** also available!

For a free quote call David ☎ 01724 763673 ☎ 07717 307380

Family Run Business | Established 2001  
Based in Scotton





We are open for fresh cut and pot grown Christmas Trees  
**from Wednesday 26th November**  
to  
**Friday 19th December 2025**

**Open 9am to 5pm (Sunday 9am-4pm)**  
If you're planning to visit us on a weekend  
please find the link to book on our website.



With large indoor and outdoor shopping areas, visit us to find your  
**trees, stands, lights, decorations and gifts.**



Refreshments provided by  
**'This Little Piggy' & Nomad Coffee Company**

**Fancy meeting Santa? Come visit him in  
his Grotto, find all the information you  
need on our website.**

**Castle Farm, Fillingham,  
Gainsborough, DN21 5BX  
(Just off the B1398, 8 miles  
north of Lincoln)**

**Call 01427 667014 or visit  
[www.fillingham-trees.co.uk](http://www.fillingham-trees.co.uk)**



### **“Kirton Academy – A remarkable transformation”**

The multi-million-pound transformation at Kirton Academy has been officially unveiled.

State-of-the-art classrooms and vastly improved facilities have been created at Kirton Academy in time for the new academic year. Since joining Lincolnshire Gateway Academies Trust last year, the school has undergone major works.

A new reception, library, music room and general makeover were completed before the programme's second phase began earlier this year.

The latest improvements include:

- Four science classrooms transformed
- Updated food technology classroom
- Refurbishment of the PE changing rooms
- Refit of kitchen and servery
- Big electrical upgrade including a new fire alarm system

Emma Ricketts (Principal) says that the school is almost unrecognisable from the one she took charge of in April last year. The learning environment that has been created is outstanding, it has been fantastic to see the children's reaction as they've walked into the new facilities. There is a renewed sense of pride around the school.

Chief Executive Officer Martin Brown thanked the main contractor Cube3 and others involved in the transformation. "It has been a wonderful project that has been well run," he said. "The site is a visible signal of improvement but the academy is improving in every way.

"It has seen, for example, a 13% rise in those achieving a GCSE grade 4 and above in English and Maths combined this summer.

"The difference from the school I first walked around is dramatic. It was not fit for purpose. It now feels loved and cared for and students and staff have responded accordingly.

"In the changing rooms the showers did not work and had been removed. The smell was terrible.

"Now, they are like a modern leisure centre, encouraging children to take part in sport."

Special guests at the unveiling included Assistant Director of Education at North Lincolnshire Council Paul Tinsley and the Mayor of Kirton in Lindsey Town Council Cllr Hazel Fox.

He said: "Since I last visited there has been a remarkable transformation.

"It is great to know students have been involved in some of the designs.

"Students who come here will now find first class learning facilities.

"When you create a culture where students are nurtured, they feel a sense of belonging and community.

"The Trust has transformed the physical environment. That alone does not make the impact but when you have the two together it makes a dramatic difference to children and staff."



As well as the overall rise in GCSE results, individual subjects performed particularly well. Maths saw a 14% rise in those achieving grade 4 or above, triple and dual science 30% and History, Geography and Food and Technology were all up between 20% and 30%.



New PE Changing Room



State of the art Science Labs



Students taking part in the official unveiling



New, modern Hospitality & Catering Facility



# A Pottery Journey 1975 to 2025

*As you may know Kirton Pottery. Is celebrating its 50th anniversary this year. We are including a history of Peter and Christine's inspiring journey to 36 High Street in two editions of the magazine.*

Peter's first introduction to pottery was at Swaneng Hill School, Serowe, Botswana where he and Christine had gone to teach in 1969. To begin with Peter taught history, geography and development studies, while Christine taught art.

The school was unusual in that as well as teaching academic subjects there was agricultural, motor repair, building, tanning and electrical training. There was also a separate section, called Boiteko, which taught skills to adults. This section included gardening, weaving, cloth printing, and a smaller tannery. The idea behind Boiteko, which means "helping one another" was that these craft skills, together with gardening, would complement the existing skills of the local adults, who were poor and who had very

little or no official currency: they could then barter what they made with each other. A shop was built and a token system was devised. What they didn't have was pottery and after a year or two Christine, who had done some potting at Sheffield Art College as part of her Fine Art training was asked if she could start a pottery workshop. Peter was very excited by the idea and told her to say that she would if they could do it together.



Norway donated money for the pottery and a lovely stone and thatched building was erected by the building trainees. Peter ordered Leach's "Potter's Book" and Michael Cardew's "Pioneer pottery" and had an exciting time building a large wood fired kiln, searching for local clay, and

learning to throw pots on one of two kick wheels.

Only a few of the old ladies were still making pots and these they decorated and burnished. The older ladies were very generous in showing us the sources of their clay and demonstrating their methods coiling and pit firing with dry cow dung and wood. Their



pots were very beautiful but Botswana is too close to South Africa with its cheap long lasting metal and plastic mugs and bowls etc. The young Batswana preferred things to be made by machine so learning to work on the pottery wheel appealed most to them.

Five very keen young ladies joined us as trainees and we did our best to keep ahead of them in learning the necessary pottery skills.



The atmosphere around the school and the various workshops with young volunteers from various countries was very exciting. We thoroughly enjoyed ourselves and so did our children, William and Oliver, who came with us aged 2 and 3. They went to the Junior School where they helped to pay for their education by taking a stick for the fire and a bone for the local bonemeal factory that then paid for the lunchtime porridge!

We came to England in 1974 with the idea of setting up our own pottery but found that house prices had gone up tenfold since we had sold our house in Somerset in 1969. Peter was

directed towards North Lincolnshire because of the clay at Barton on Humber. By chance he found that Kirton had various dilapidated buildings for sale very cheaply including No.36 and No.38 High Street for £1,600, which was just the money we had. The property was condemned but everyone was very kind and Huntcliff school gave Peter a job for a year, whilst Christine taught at a play school. We refurbished the two cottages into a flat for accommodation upstairs and a workshop downstairs. We made our first pot in the autumn of 1975.

As well as starting to sell from the pottery in Kirton we also had a space to sell at Jews House on Steep Hill in Lincoln. We spent most weekends working in a large wooden shed at Elsham Hall where there was a kiln and also the opportunity to sell to visitors. We went there by train from Kirton to Barnetby and then by bicycle to Elsham with Oliver and William. At first we made slip decorated earthenware. Christine became very good at trailed decoration for named mugs, wedding and birthday plates inspired by the book "Mary Wondrausch on Slipware".

We could not have started the pottery in Kirton without the help of friends who had also come back from working in Botswana and gave us money for our first small electric kiln. We were also assisted by a loan from Peter's father and a government grant of £1,000 to repair the house. Our

costs were also reduced by doing much of the building work ourselves. Peter, assisted by the nine year old Oliver, laid new electrical wiring and plumbing, which was tested and passed by inspectors, as was normal in those days.

In 1976 Peter searched out fire bricks that came from demolished furnaces as Britain changed over from coal gas to natural gas and started to build the gas fired kiln we still use today. As well as making pots we also taught in schools and held classes at the pottery. We were lucky that, in the years when we were starting, craft potteries were still locally rare and Kirton pottery gradually

became fairly well known. We could even employ Marian Mumby and later Lee Cox until the minimum wage came in and we had to let them go. We didn't feel guilty because we didn't earn minimum wage ourselves. Christine's accident in 1980 was a terrible blow for us both personally and for the pottery since Christine did nearly all the decorating. However Christine gradually recovered over the years and managed amazingly well with her one good hand.

*Peter and Christine Hawes*

To Be Continued in January



### **Ballroom Dancing for All**



**2nd Monday of each month commencing 2pm - 4pm.**

Come and trip the light fantastic, good for mental and physical health. No age limit. Tables decorated with fresh flower posies and refreshments served at your table, Tea, Coffee and biscuits. There is also a raffle on entry if you wish to participate. Male dancer will partner ladies if they wish to dance with a male partner.

A good social afternoon all for the price of £4 plus £1 for raffle tickets

---





**TOWN  
HALL  
LIVE**

## Bringing the best in Folk, Roots & Americana music from America, Canada, Europe and the UK to Kirton

### FRIDAY 7<sup>th</sup> NOVEMBER – ALICE HOWE & FREEBO

To hear Alice sing is to be enraptured by the natural unaffected beauty of her voice. There is no artifice, just honest authentic, singing in the tradition of the roots music that shaped her. She will again be accompanied by her long-time mentor, the legendary Freebo (£16)



### SATURDAY 15<sup>th</sup> NOVEMBER - THE PLEASURES



The Pleasures are fronted by the renowned Australian singer/songwriter Catherine Britt and Melbourne's Lachlan Bryan. The band produce a sound that is blue's inspired and occasionally interrupted by delicate moments of sublime country folk. In August this year they released their second album 'Enemy of my Enemy' and are playing a handful of UK dates on the back of a Scandinavian tour. Another must-see band. (£17)

### SATURDAY 29<sup>th</sup> NOVEMBER – AMY SPEACE

Amy, from East Nashville, last headlined THL on Valentine's Day 2020 just prior to the Covid lockdown. It was a memorable concert. Since then, she has released three albums, the last of which is the excellent 'American Dream'. Each new release has brought an expansion of her voice and art. She is an exceptional singer songwriter. This Town Hall Live concert is one of only two in England, the other is in London. (£16)



### SATURDAY 20<sup>th</sup> DECEMBER - WILSON & WAKEMAN



With no live performances together since the beginning of 2024, Damian and Adam have decided to play only a handful of UK Christmas shows to spread goodwill, good music and a few laughs prior to the big day. We are delighted that they have asked us if we can host one of them. (£17.50)

**Ticket Alert: Only a few left**

**TICKETS FOR ALL CONCERTS CAN BE PURCHASED FROM:**

Brian on 01652 649230 or [brianchudley@btinternet.com](mailto:brianchudley@btinternet.com), Morrison's Daily in Kirton in Lindsey Market Place or [www.wegotickets.com](http://www.wegotickets.com)

For information on the full programme visit our website at

[www.townhalllive.co.uk](http://www.townhalllive.co.uk)

Subscribe to our mailing list with regular updates on upcoming concerts

Follow us on Facebook



# Kirton in Lindsey Amateur Gardeners Meetings & News



The KLAGs 2025 season of meetings finishes on Wednesday 19<sup>th</sup> November at 7.30pm, in the Town Hall, Market Place, Kirton in Lindsey.

Members and guests will be having a '**social evening**' of quizzes, challenges and merriment.

It is also the club's AGM prior to evening's entertainment. There have been several committee members stepping down from the duty this time. If you are interest in helping to run this small gardening club with a long history please come along or get in touch.

At each meeting monthly competitions are held for members, this month it will be 'a house plant'

Please come along and join us we are a friendly bunch. All are welcome whether you just enjoy going out to talks or are experienced gardeners.



The Annual Show (held on Sat 6<sup>th</sup> Sept) was a great success. There were more exhibits than last year with the fruit, vegetables and

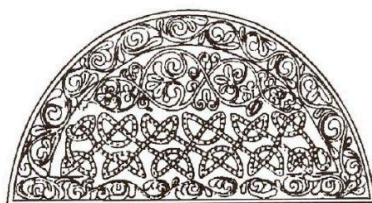
culinary classes full to bursting!



Follow us on Facebook at KLAGs (Kirton in Lindsey Amateur Gardeners)

For more information contact Martin Hollingsworth (Publicity Officer) on 01652 648435 or [m.hollingsworth205@btinternet.com](mailto:m.hollingsworth205@btinternet.com)





*the kirton in lindsey society*

## Kirton in Lindsey Society Meetings and News

The Kirton in Lindsey Society season of talks continues on the evening of Tuesday 25<sup>th</sup> November.

The talk this time is titled **Love Lincolnshire Plants**, this is a recent project by the Lincolnshire Wildlife Trust. An illustrated talk given by **Aidan Neary**, who was the person that ran this successful initiative celebrating Lincolnshire's wonderful plants!

All meetings commence at 7.30 p.m. in the Diamond Jubilee Town Hall, High Street, Kirton in Lindsey DN21 4LZ.

Entrance fee is normally £2.00 including refreshments for members and £5 for non-members.

For details of the special December '**Crying Christmas**' by the City of Lincoln Waites see additional article.

The Kirton in Lindsey Society welcomes anyone with an interest in the North Lindsey area: its history and environment. Meetings, outings and social activities are arranged throughout the year.

For further information and up to date news please contact Martin Hollingsworth on 01652 648435 or [enquiries@kirtoninlindseysociety.org.uk](mailto:enquiries@kirtoninlindseysociety.org.uk) or visit our website: [www.kirtoninlindseysociety.org.uk](http://www.kirtoninlindseysociety.org.uk)

**Yarrow** *Achillea millefolium*



CREDIT: LWT

# COMMUNITY SHOP



**Kirton in Lindsey Town Hall**  
**Every Friday**  
**1pm-1.45pm**

A different selection of food each week  
Each item is allocated a points value



**16 points for £6**  
**8 points for £3**



# KIRTON IN LINDSEY TOWN COUNCIL



## 2025/26 **UPCOMING** EVENTS

**30<sup>TH</sup> NOVEMBER 25**

Christmas Festival

**1<sup>ST</sup> - 7<sup>TH</sup> DECEMBER 25**

Christmas Characters

**7<sup>TH</sup> MARCH 26**

Mayor's Civic Dinner

**8<sup>TH</sup> APRIL 26**

Annual Town Meeting

**11<sup>TH</sup> JULY 26**

Summer Gala

For More Information email:

[assistantclerk@kirtoninlindseytowncouncil.gov.uk](mailto:assistantclerk@kirtoninlindseytowncouncil.gov.uk)

## Phil Stephenson

Painter and Decorator  
40 years' experience



10 Orchard Close  
Kirton in Lindsey  
Lincolnshire  
DN21 4TL

07710 799645

Free Estimates

